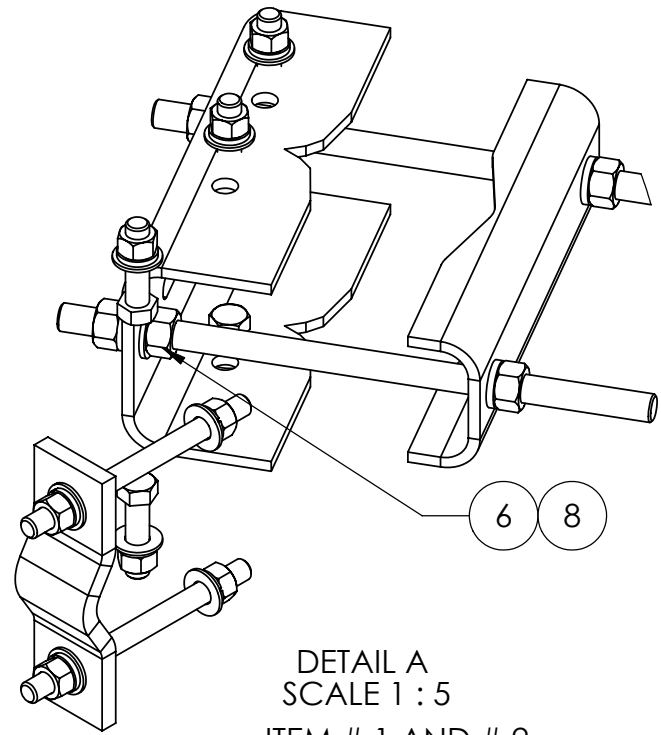
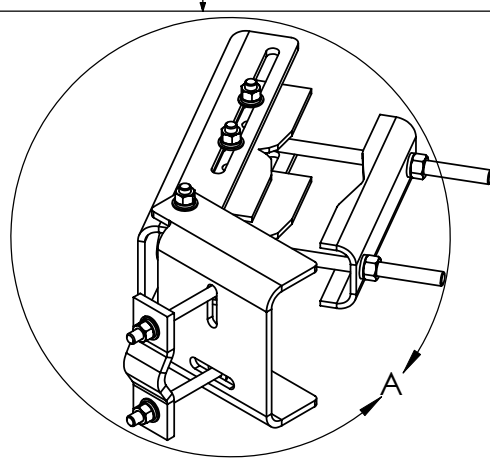
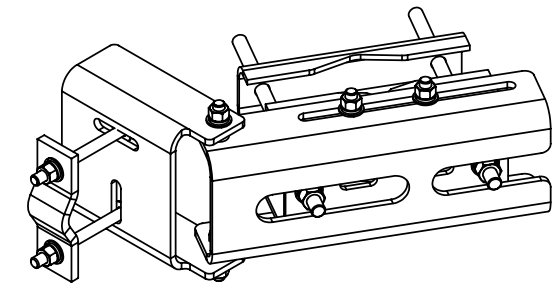
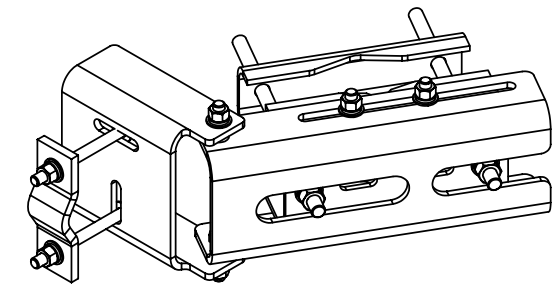
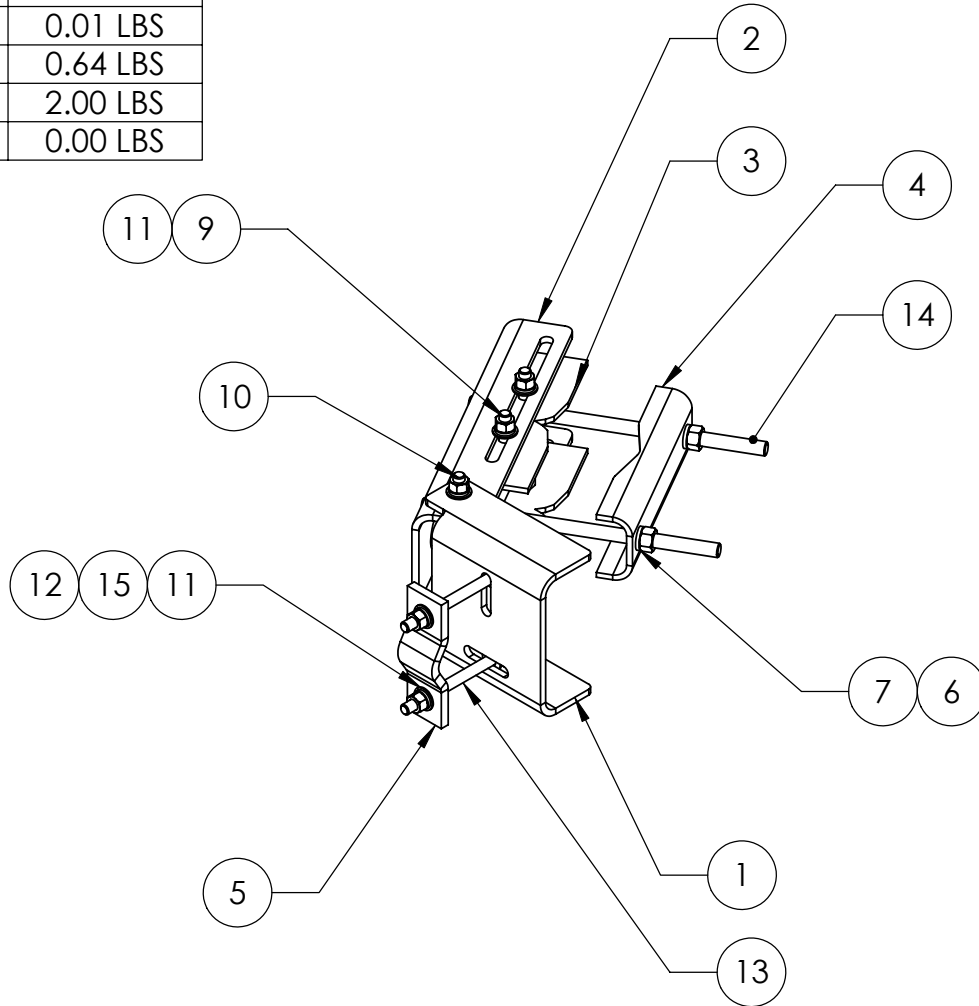


ITEM	PART NO.	DESCRIPTION	QTY.	WEIGHT
1	MTC9872.03	CHANNEL PIVOT BRACKET 4-1/2" PIPE	4	13.31 LBS
2	MTC9872.08	TF-M Face Bracket Weldment	4	21.03 LBS
3	MTC9872.10	Mount	4	12.58 LBS
4	SMU2080.06	CLAMP PLATE	4	6.43 LBS
5	TFMB01	Tower Face Mount Clamp	4	2.73 LBS
6	GN-06	3/4" GALV HEX NUT	24	0.01 LBS
7	GWL-06	3/4" GALV LOCK WASHER	16	0.00 LBS
8	GWF-06	3/4" GALV FLAT WASHER	16	0.00 LBS
9	GB-0520A	5/8" X 2" GALV BOLT KIT (A325)	16	0.07 LBS
10	GB-0524A	5/8" X 2-1/2" GALV BOLT KIT (A325)	8	0.07 LBS
11	GWF-05	5/8" GALV FLAT WASHER	40	0.00 LBS
12	GN-05	5/8" GALV HEX NUT	16	0.01 LBS
13	MT-381-8	5/8" X 8" GALV THREADED ROD	8	0.64 LBS
14	MT-384-16	3/4" X 16" GALV THREADED ROD	8	2.00 LBS
15	GWL-05	5/8" GALV LOCK WASHER	16	0.00 LBS

REVISIONS				
REV.	ZONE	DESCRIPTION	BY	DATE
A		INITIAL RELEASE	OGG	03/10/2010



DETAIL A  
SCALE 1 : 5  
ITEM # 1 AND # 2  
REMOVED



These drawings and specifications are the proprietary property of ANDREW CORPORATION and may be used only for the specific purpose authorized in writing by Andrew Corporation.  ALL DIMENSIONS ARE IN INCHES U.O.S. TOLERANCES UNLESS OTHERWISE SPECIFIED: .X = ± .06      ANGLES      ±2° .XX = ± .03      FRACTIONS      ±1/32 .XXX = ± .010  REMOVE BURRS AND BREAK EDGES .005  DO NOT SCALE THIS PRINT	DRAWN BY: OGG	SHEET: 1 of 1	PART NUMBER: TF-MB
	CHECKED BY: TP	SCALE: NTS	DESCRIPTION: Tower Face Mount Base Kit
	DATE: 3/11/10	MATERIAL: A36	DRAWING TYPE: ASSEMBLY SHOP DRAWING
	REVISION: A	FINISH: GALV A123	WEIGHT: 262.27 LBS