

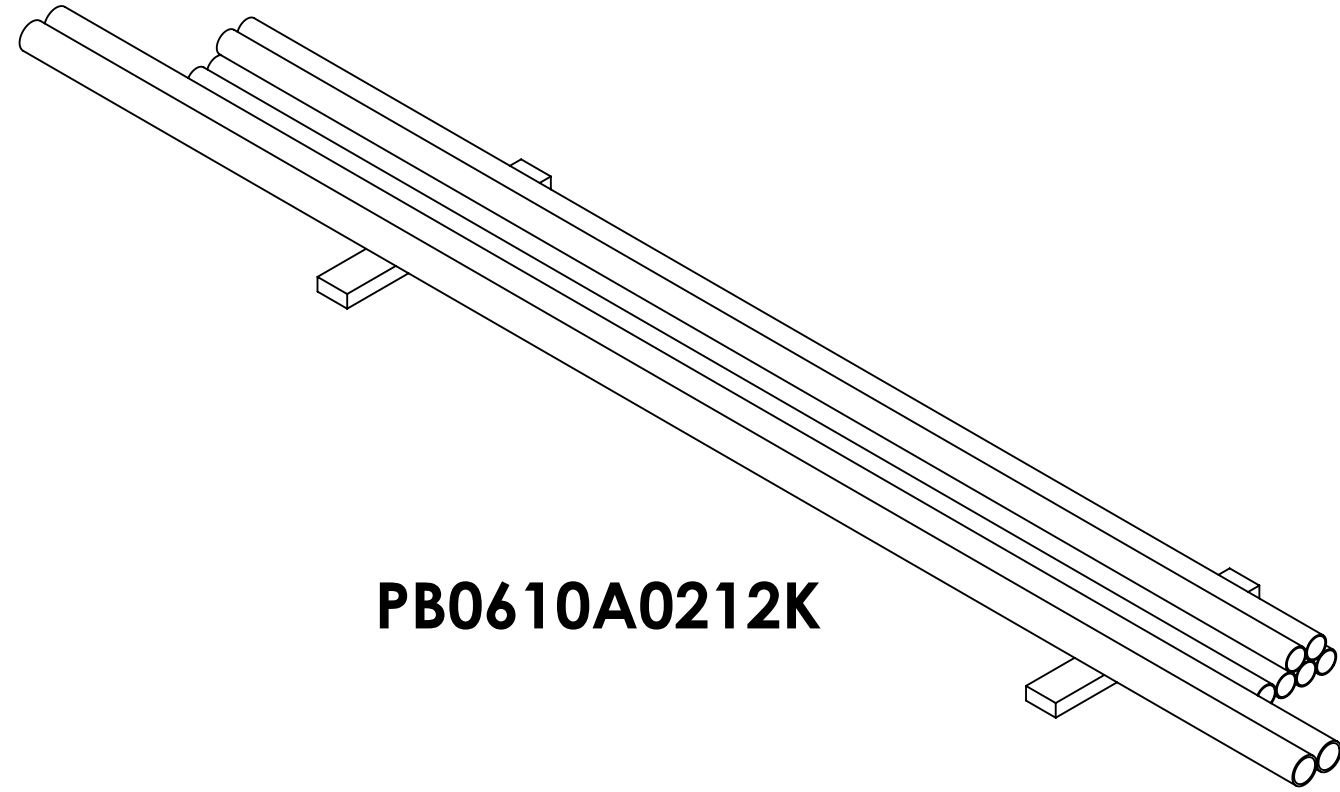
NOTES:

- 1.0 GENERAL
 - 1.1 ALL METRIC DIMENSIONS ARE IN BRACKETS
 - 1.2 FOR PATENT INFO: <https://www.commscope.com/ProductPatent/ProductPatent.aspx>
- 2.0 DESIGN NOTES
 - 2.1 ANY HAZARDS OR OBSTRUCTIONS TO THE CLIMBING FACILITY AND SAFETY CLIMB MUST BE IDENTIFIED PRIOR TO INSTALLING THE APPURTENANCE. ADDITIONAL PRODUCTS MAY BE REQUIRED TO MAINTAIN THE INTEGRITY OF THE SAFETY CLIMB. DURING INSTALLATION, TEMPORARY AND/OR PERMANENT PRECAUTIONARY MEASURES SHOULD BE TAKEN TO PRESERVE THE CLIMBING FACILITY AND/OR SAFETY CLIMB.
- 3.0 MANUFACTURING/SPECIAL REQUIRMENTS
 - 3.1 FOR LOADING SEE ENGINEERING SPEC SHEET.
- 4.0 TEST
- 5.0 PACKAGING

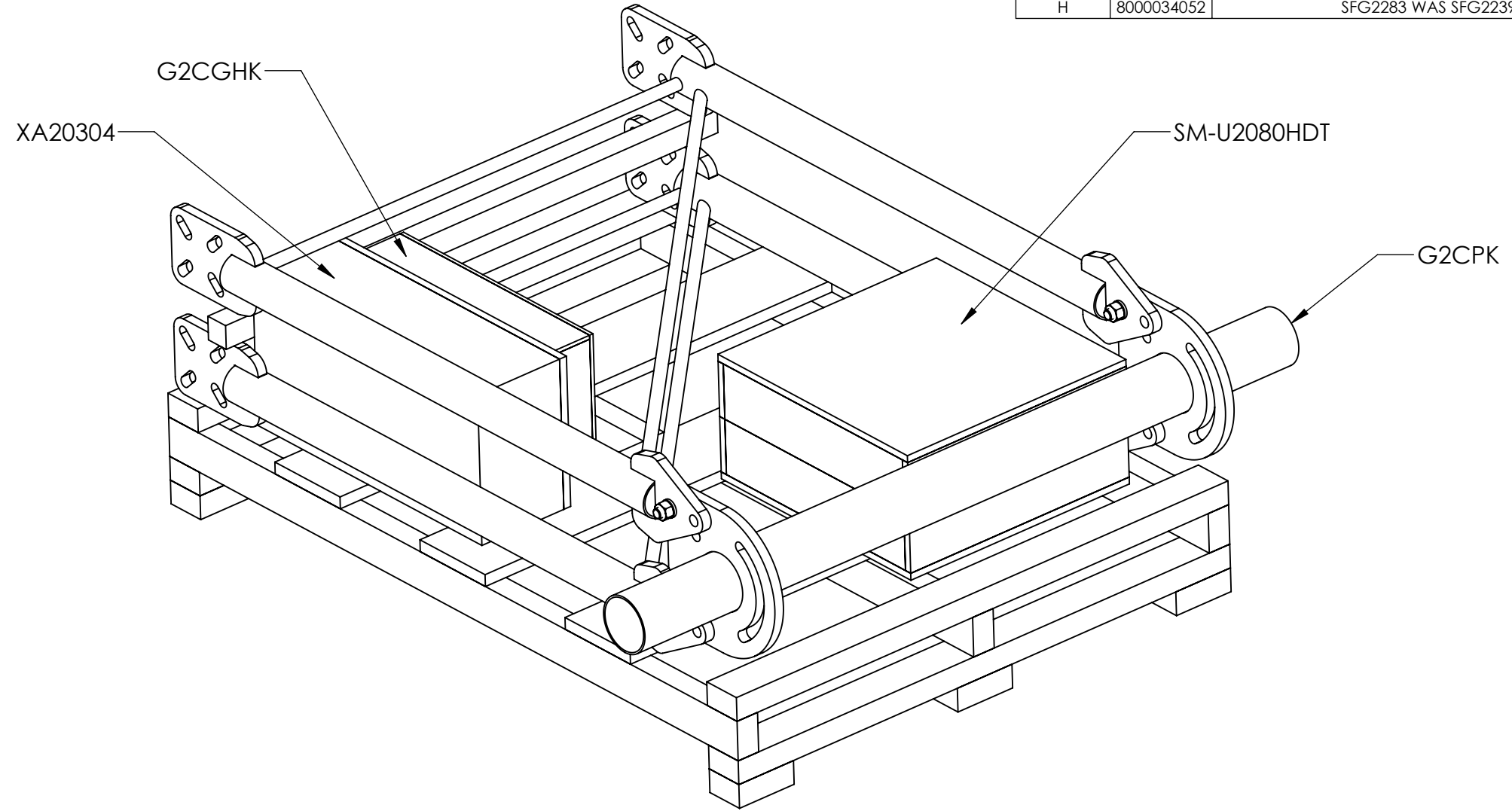
www.Talleycom.com | Sales@Talleycom.com | 800.949.7079



REVISIONS				
REV.	ECN	DESCRIPTION	BY	DATE
A	8000015465	INITIAL RELEASE	DRR	08/03/2016
B	8000015912	ADDED SFG2C BASE KITS	DRR	09/01/16
C	8000016253	ADDED DIAGONAL BRACES	DRR	01/17/17
D	8000024655	ADJUSTED WEIGHT OF SFG2CPK/2/3 AND ALL TOTALS	DRR	07/12/17
E	8000026272	UPDATED SERIES TABLE	RJC	09/26/17
F	8000026805	UPDATED TABLE WITH NEW PIPE BUNDLES	RJC	10/24/17
G	8000029653	UPDATED HARDWARE KIT	RJC	06/21/18
H	8000034052	SFG2283 WAS SFG2239	RJC	02/22/19



PB0610A0212K



SFG2CG-12-4-126 SHOWN FOR REFERENCE ONLY

TOP LEVEL ZNSK COMPONENTS

PART NO.	DESCRIPTION	PACK KIT	PIPE BUNDLE	WEIGHT(LBS)	AT&T RATING
SFG2CT-10-4-126	SINGLE SECTR FRM KIT 10'6" FACE W/TAPER	G2CPKT14	PB0610A0210K	591	HEAVY WLL
SFG2CT-12-B	SINGLE SECTR FRM KIT 12'6" FACE W/TAPER	G2CPKT1	PB0210A0212K	441	HEAVY WLL
SFG2CT-12-B3	TRIPLE SECTR FRM KIT 12'6" FACE W/TAPER	G2CPKT3	PB0610A0612K	1322	HEAVY WLL
SFG2CT-12-4-96	SINGLE SECTR FRM KIT 12'6" FACE W/TAPER	G2CPKT14	PB0210A0408A0212K	573	HEAVY WLL
SFG2CT-12-5-96	SINGLE SECTR FRM KIT 12'6" FACE W/TAPER	G2CPKT15	PB0210A0508A0212K	606	HEAVY WLL
SFG2CT-12-4-126	SINGLE SECTR FRM KIT 12'6" FACE W/TAPER	G2CPKT14	PB0610A0212K	602	HEAVY WLL
SFG2CG-10-4-126	SINGLE SECTR FRM KIT 10'6" FACE NO TAPER	G2CPKG14	PB0610A0210K	587	HEAVY WLL
SFG2CG-12-B	SINGLE SECTR FRM KIT 12'6" FACE NO TAPER	G2CPKG1	PB0210A0212K	437	HEAVY WLL
SFG2CG-12-B3	TRIPLE SECTR FRM KIT 12'6" FACE NO TAPER	G2CPKG3	PB0610A0612K	1290	HEAVY WLL
SFG2CG-12-4-96	SINGLE SECTR FRM KIT 12'6" FACE NO TAPER	G2CPKG14	PB0210A0408A0212K	569	HEAVY WLL
SFG2CG-12-5-96	SINGLE SECTR FRM KIT 12'6" FACE NO TAPER	G2CPKG15	PB0210A0508A0212K	602	HEAVY WLL
SFG2CG-12-4-126	SINGLE SECTR FRM KIT 12'6" FACE NO TAPER	G2CPKG14	PB0610A0212K	598	HEAVY WLL

PACK KIT COMPONENTS

PACK KIT	FRAME KIT	SADDLE MOUNT	CROSSOVER KIT	HARDWARE KIT
G2CPKT1	G2CPK	SM-U2080HDT		G2CTHK
G2CPKT3	G2CPK3	SM-U2080HDT (QTY 3)		G2CTHK (QTY 3)
G2CPKT14	G2CPK	SM-U2080HDT	XA20304	G2CTHK
G2CPKT15	G2CPK	SM-U2080HDT	XA20305	G2CTHK
G2CPKG1	G2CPK	SM-U2080HDG		G2CGHK
G2CPKG3	G2CPK3	SM-U2080HDG (QTY 3)		G2CGHK (QTY 3)
G2CPKG14	G2CPK	SM-U2080HDG	XA20304	G2CGHK
G2CPKG15	G2CPK	SM-U2080HDG	XA20305	G2CGHK

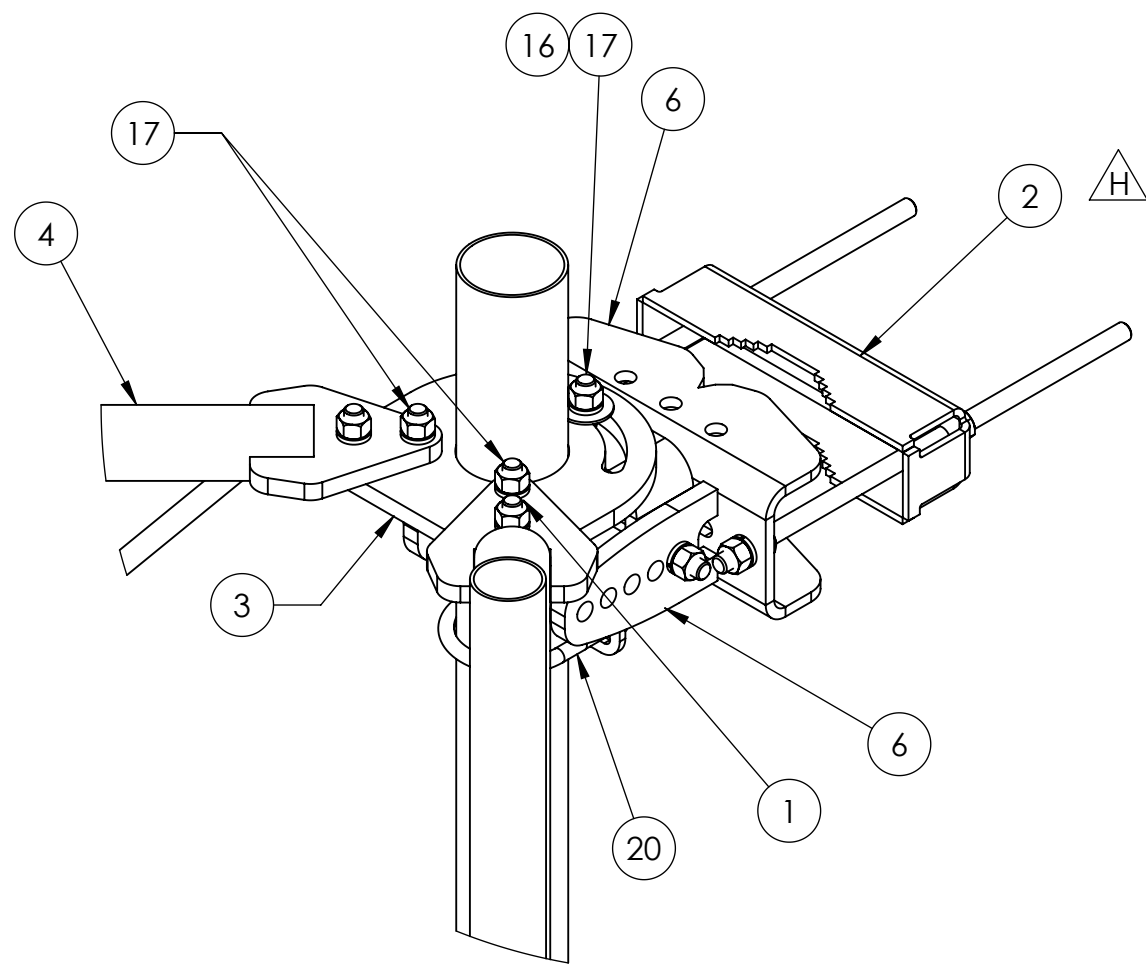
DENSITY	0.24	lbs/in ³
MASS	331.17	lbs
VOLUME	1405.90	in ³
SURFACE AREA		in ²
HEIGHT		
LENGTH		
WIDTH		

PATENT PENDING

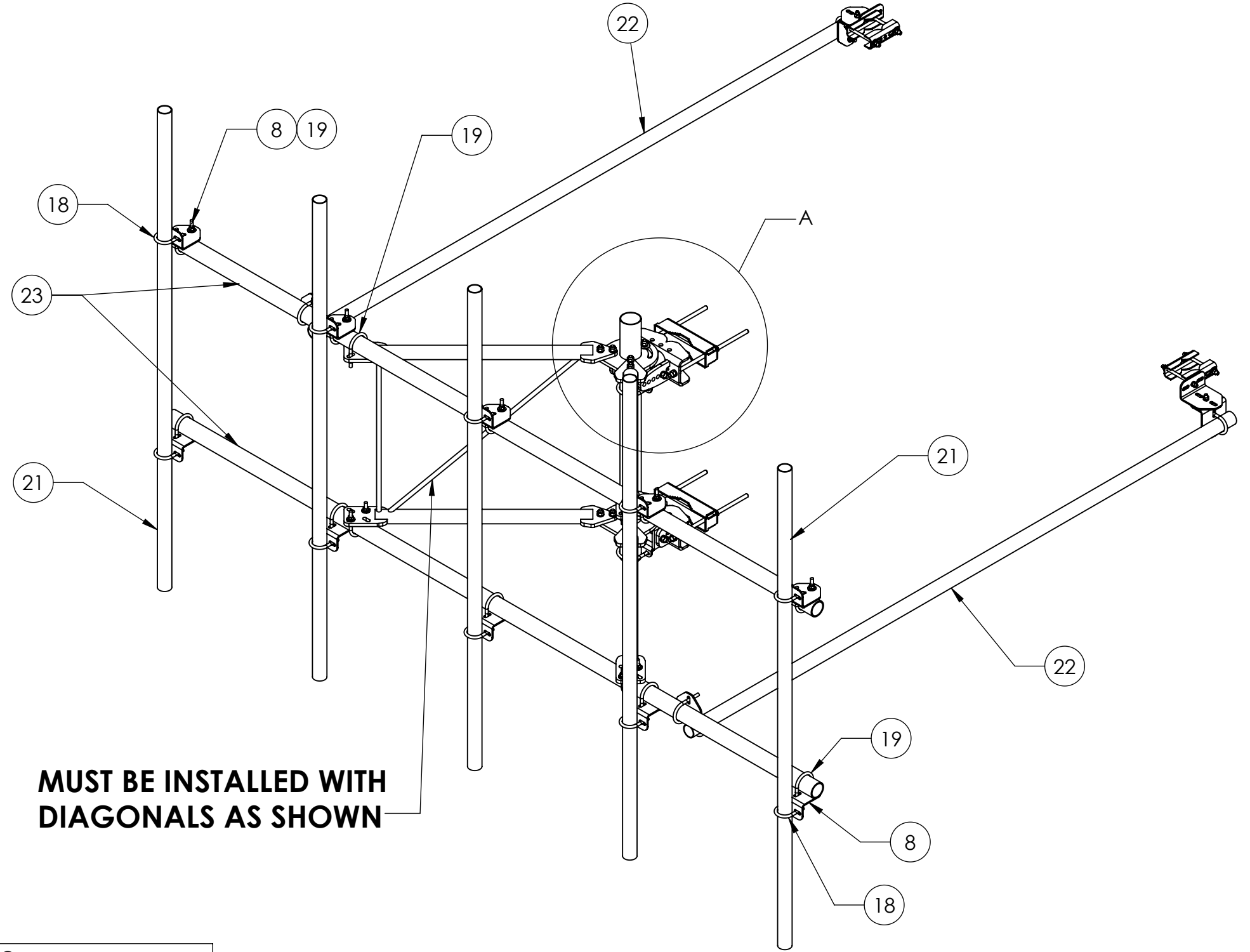
COMMSCOPE, INC. OF NORTH CAROLINA

TOLERANCES		SAP MATERIAL MASTER	
1 PLACE .X ± 0.25	3 PLACE .XXX ± 0.06	SEE TABLE	
2 PLACE .XX ± 0.12	ANGLES ± 2°		
FINISH GALV A123		MATERIAL A500, A529, A572, A1011/A1018	
UNLESS OTHERWISE SPECIFIED DIMENSIONS ARE IN INCHES INTERPRET PER ANSI Y 14.3M-1994	CE	FA1024	02/21/18
	RW	BCAMPBELLCON	02/25/2019
	RV		
	AD	MC1107	02/26/2019
RE	BCAMPBELLCON	02/26/2019	
ECN	008000034052	SCALE	1:16
TITLE		SFG2C SECTOR FRAME	
DOCUMENT NO.		SFG2C SERIES	
SIZE	WORK AREA 24	MODEL	
C		VERSION	STATUS
		00	RE
DRAWING		VERSION	STATUS
		01	RE
SHEET		REVISION	
		H	
1 OF 8			

NOTES:



DETAIL A
SCALE 1 : 6



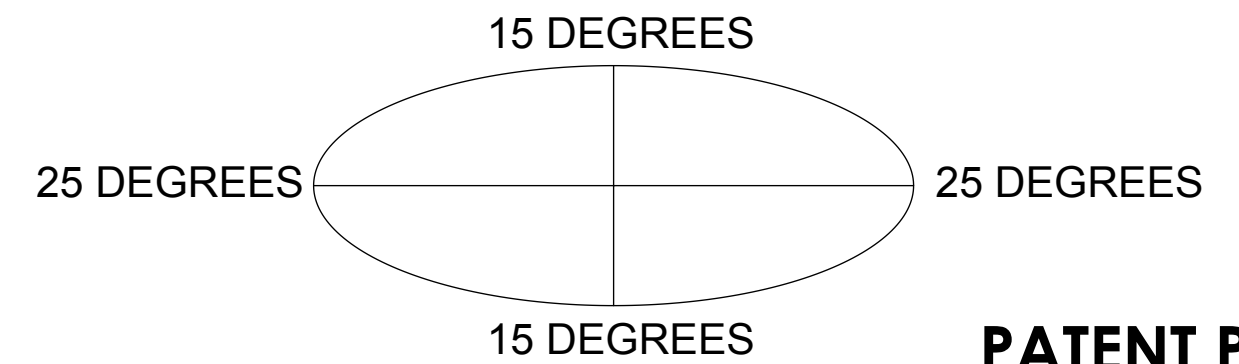
**MUST BE INSTALLED WITH
DIAGONALS AS SHOWN**

SHOWN FOR REFERENCE: SFG2CT-12-5-96

ITEM	PART NO.	DESCRIPTION	QTY.	WEIGHT	NOTE NO.
1	SFG2237	WELDMENT, AZIMUTH/TAPER BRACKET	2	6.46 LBS	NOT INCLUDED IN CG MODELS
2	SFG2283	BACK TOWER LEG CLAMP	2	6.64 LBS	
3	SFG2270	BACK VERTICAL ARM MOUNT	1	36.90 LBS	
4	SFG2278	ARM, STANDOFF - SFG22	2	40.92 LBS	
5	SFG2343	WELDMENT, LOWER, TOWER LEG BRACKET	1	14.37 LBS	FOR CG MODELS PART NO. IS SFG2344
6	SFG2345	WELDMENT, TOP TAPER BRACKET	1	18.27 LBS	FOR CG MODELS PART NO. IS SFG2344
7	SAB01	FORMED CLAMP	4	1.35 LBS	
8	XAU01	ANGLE, CROSSOVER, 1.9-3.5" X 1.9-3.5" OD	16	2.98 LBS	
9	MT-379-8	1/2" X 8" GALV THREADED ROD	4	0.45 LBS	
10	GN-04	1/2" GALV HEX NUT	10	0.04 LBS	
11	GWL-05	5/8" GALV LOCK WASHER	8	0.03 LBS	
12	GWF-04	1/2" GALV FLAT WASHER	8	0.03 LBS	
13	GB-04145	1/2" X 1-1/2" GALV BOLT KIT	2	0.13 LBS	
14	MT-382-18	5/8" X 18" GALV THREADED ROD	4	1.55 LBS	
15	GWL-04	1/2" GALV LOCK WASHER	10	0.01 LBS	
16	GWF-05	5/8" GALV FLAT WASHER	2	0.06 LBS	
17	GB-05225	5/8" X 2-1/4" GALV BOLT KIT	14	0.28 LBS	QTY IN "CG" MODELS IS 10
18	GUB-4240	1/2" X 2-1/2" X 4" GALV U-BOLT	14	0.56 LBS	
19	GUB-4352	1/2" X 3" X 5-1/4" GALV U-BOLT	16	0.71 LBS	
20	GUB-4355	1/2" X 3-5/8" X 5" GALV U-BOLT	2	0.71 LBS	FOR CG MODELS, PART NO. IS GUB-53560
21	MT-651-96	Ø 2.375" OD X 96" PIPE	5	23.05 LBS	FOR 10'-6" ANTENNA PIPE, PART NO. IS MT-537
22	MT-537	Ø 2.375" OD X 126" PIPE	2	30.45 LBS	
23	MT-546-150	2-7/8" OD x 150" GALV PIPE	2	72.67 LBS	FOR 10'-6" FACE PIPE, PART NO. IS MT-546-126
24	GN-05	5/8" GALV HEX NUT	12	0.08 LBS	

ALLOWABLE TIEBACK ANGLE

± 15 DEGREES VERTICAL
± 25 DEGREES HORIZONTAL



PATENT PENDING

COMMSCOPE, INC. OF NORTH CAROLINA			
TITLE SFG2C SECTOR FRAME			
SIZE C	SCALE 1:20	DOCUMENT NO. SFG2C SERIES	
DRAWING			SHEET
VERSION 01	STATUS RE	REVISION H	2 OF 8

4

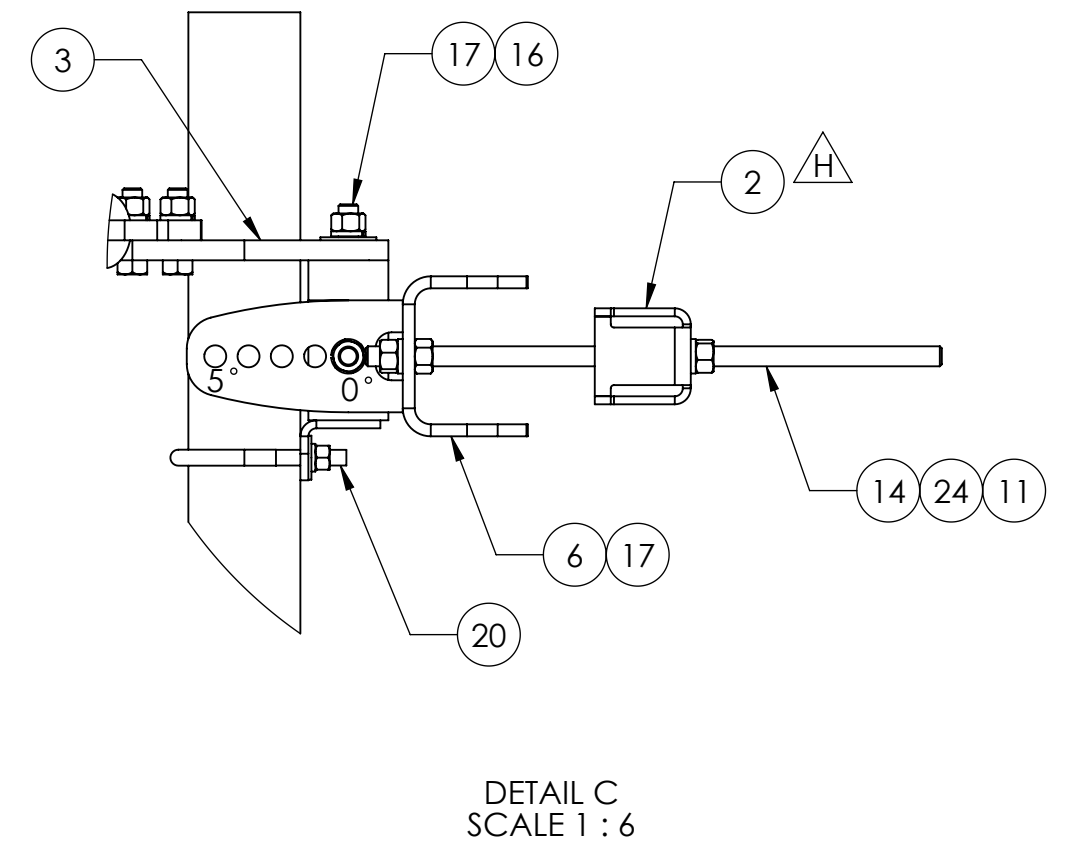
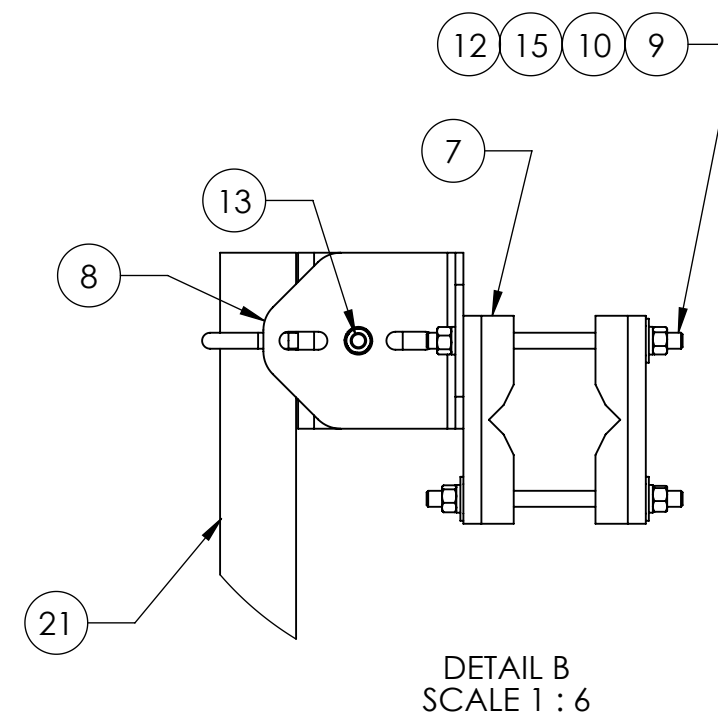
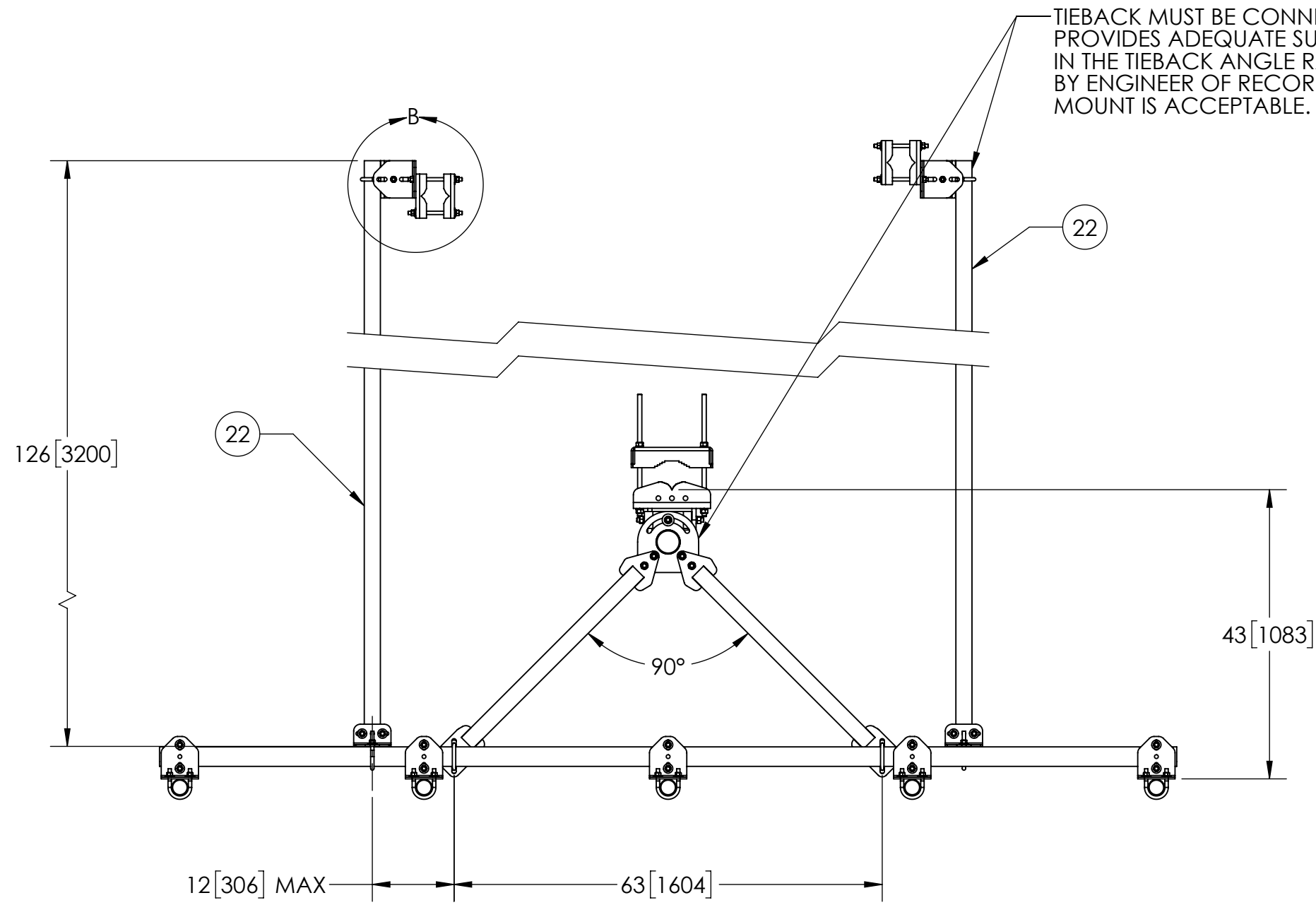
3

2

1

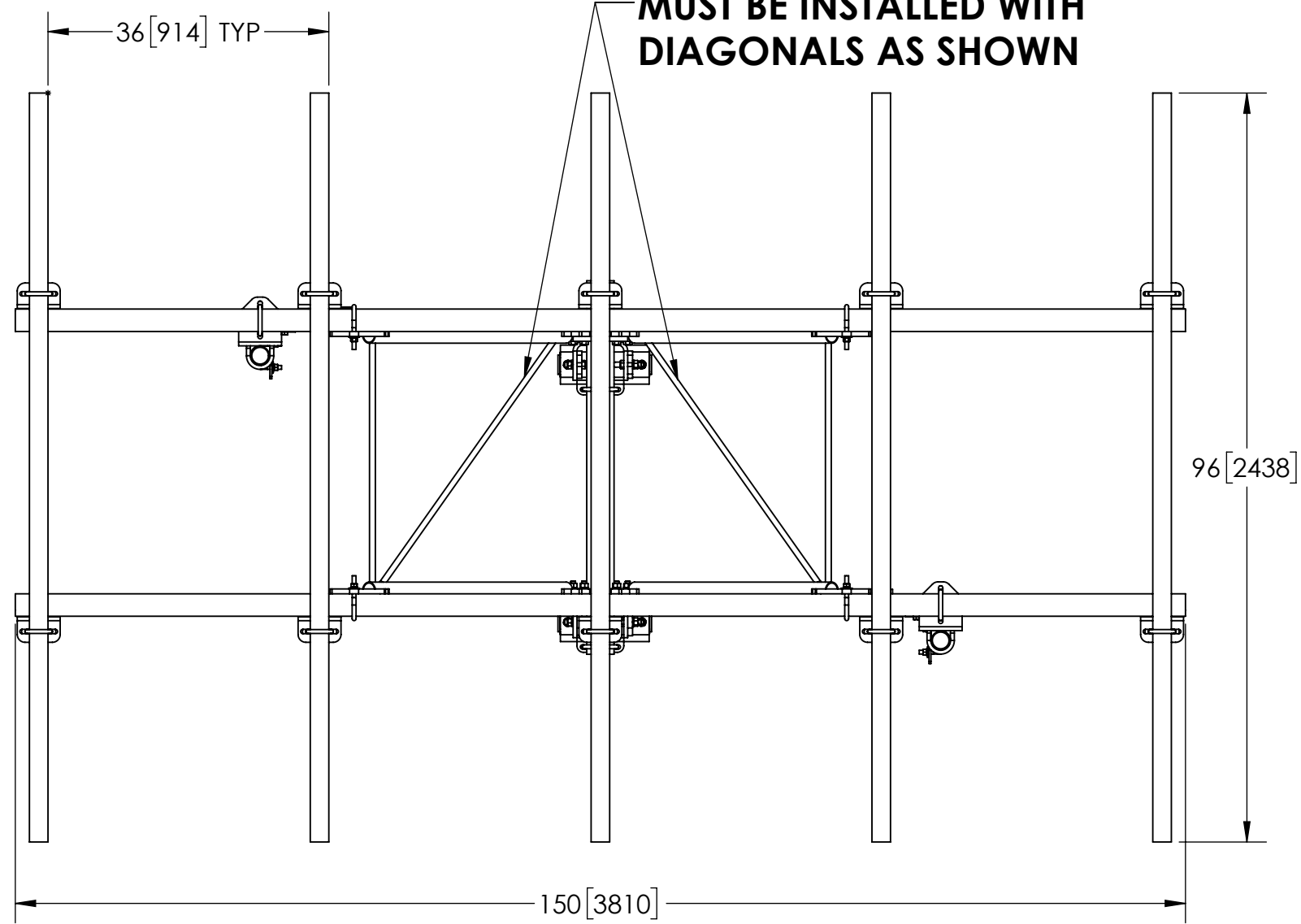
NOTES:

TIEBACK MUST BE CONNECTED TO A RIGID MEMBER THAT PROVIDES ADEQUATE SUPPORT WITHIN THE LIMITS NOTED IN THE TIEBACK ANGLE RANGE DETAIL. UNLESS APPROVED BY ENGINEER OF RECORD. SPINE STEM OF NEIGHBORING MOUNT IS ACCEPTABLE.

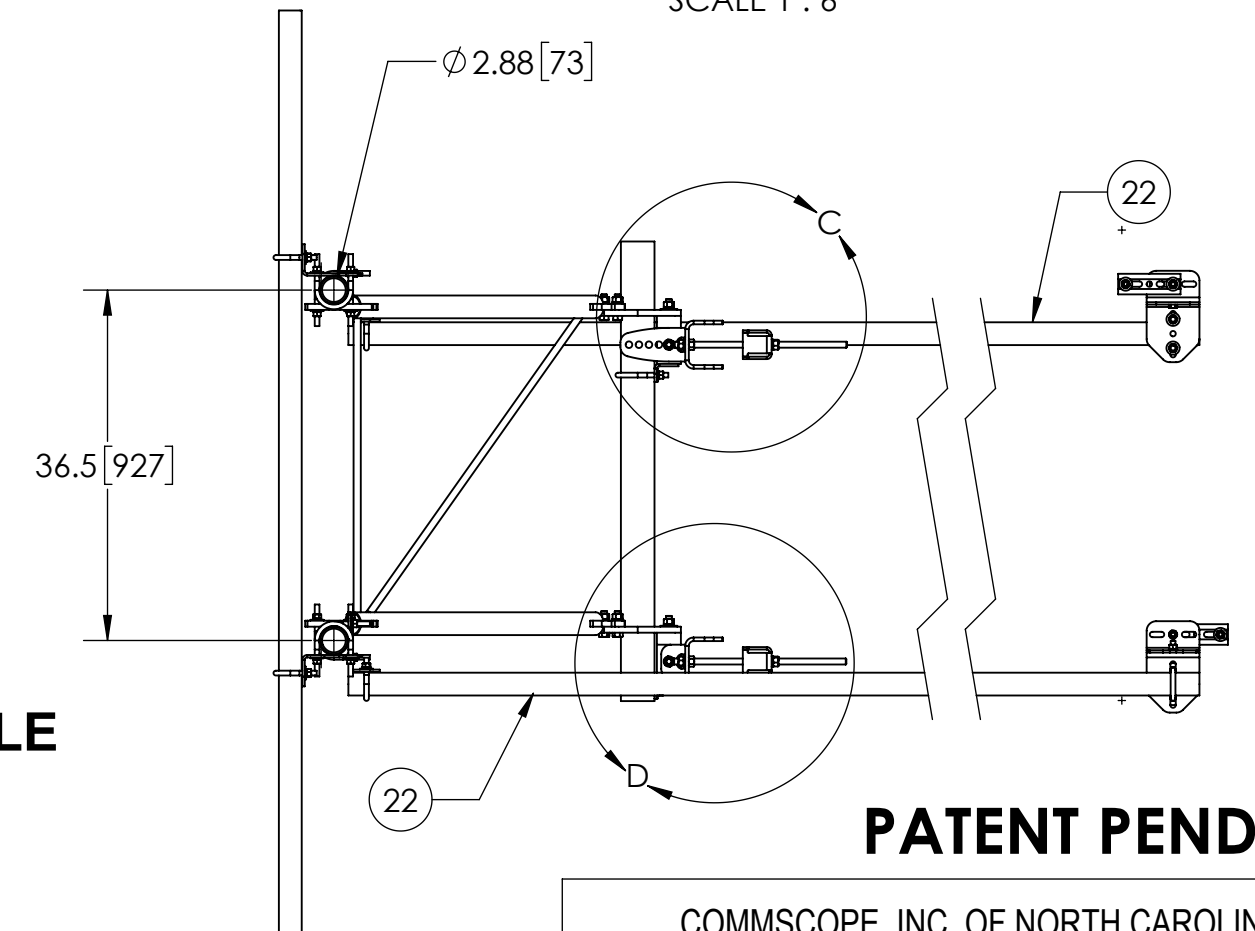
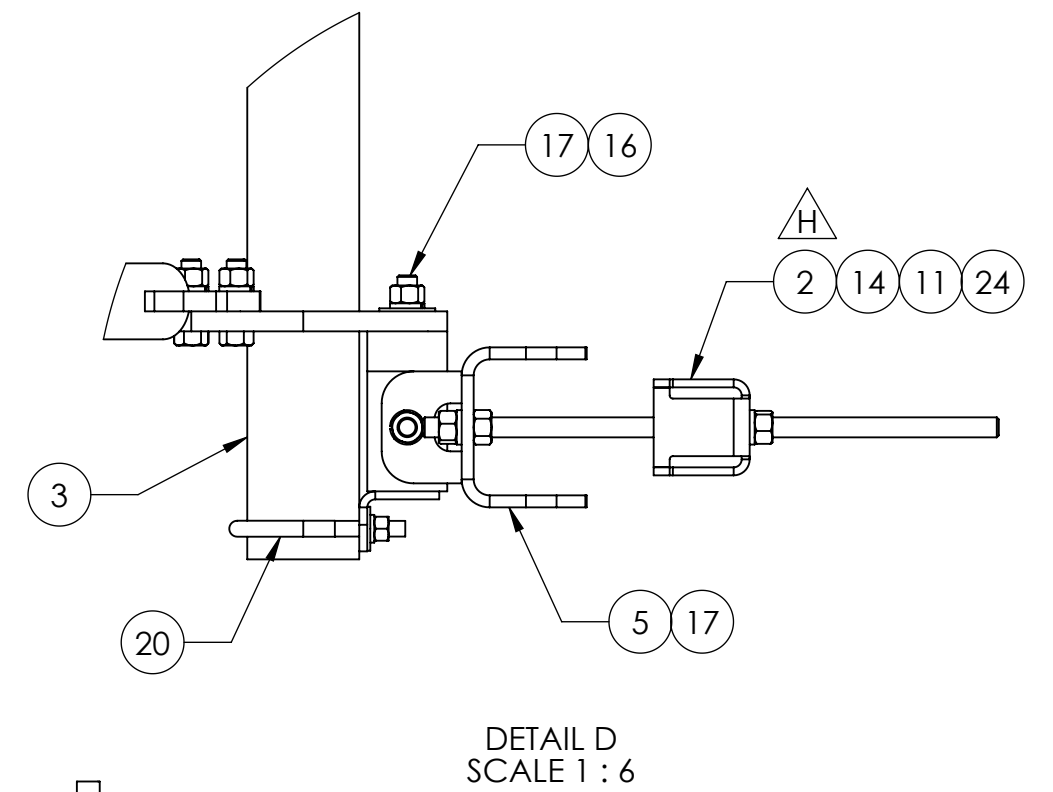
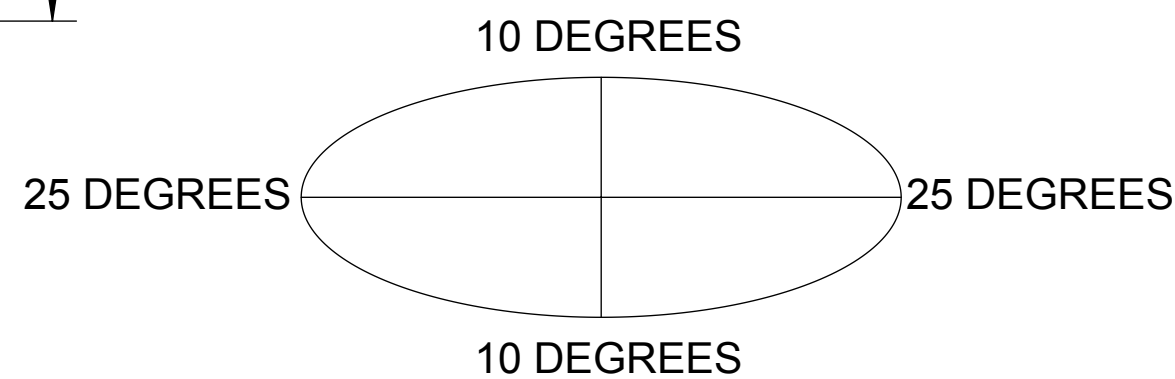


SHOWN FOR REFERENCE: SFG2CT-12-5-96

MUST BE INSTALLED WITH DIAGONALS AS SHOWN



ALLOWABLE TIEBACK ANGLE
±10 DEGREES VERTICAL
±25 DEGREES HORIZONTAL



PATENT PENDING

www.Talleycom.com | Sales@Talleycom.com | 800.949.7079



© 2018 CommScope, Inc.

COMMSCOPE, INC. OF NORTH CAROLINA				
TITLE SFG2C SECTOR FRAME				
SIZE C	SCALE 1:20	DOCUMENT NO. SFG2C SERIES		
		DRAWING		SHEET
		VERSION	STATUS	REVISION
		01	RE	H
				SHEET 3 OF 8

4

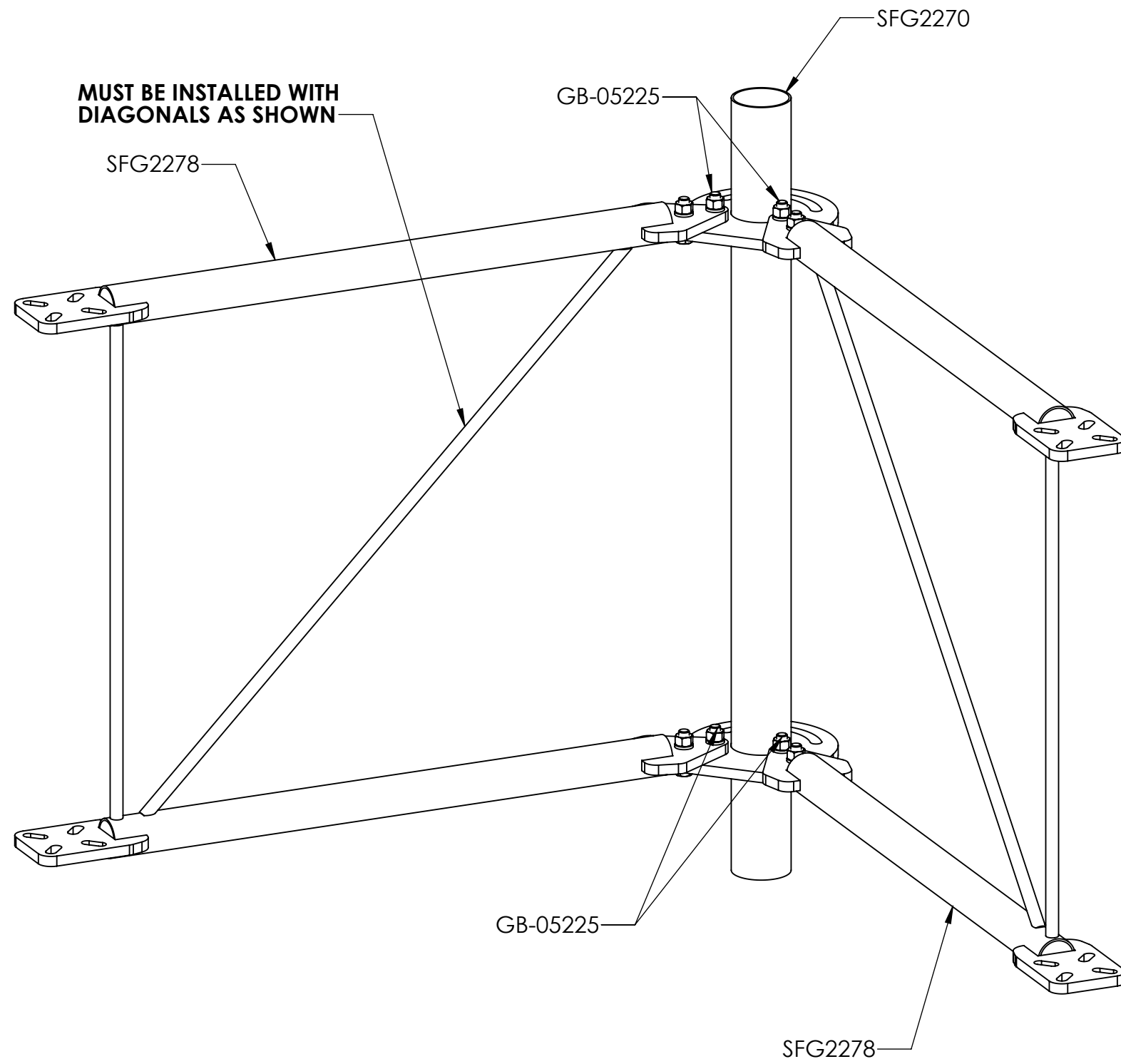
3

2

1

NOTES:

STEP 1: ATTACH STANDOFF ARMS (SFG2278) TO BACK VERTICAL ARM MOUNT (SFG2270) USING BOLT KIT (GB-05225).



ISO VIEW

PATENT PENDING

COMMSCOPE, INC. OF NORTH CAROLINA

TITLE	SFG2C SECTOR FRAME		
-------	--------------------	--	--

SIZE	SCALE	DOCUMENT NO.		
C	1:8	SFG2C SERIES		
		DRAWING		
		VERSION	STATUS	REVISION
		01	RE	H
				SHEET
				4 OF 8

www.Talleycom.com | Sales@Talleycom.com | 800.949.7079



© 2018 CommScope, Inc.

4

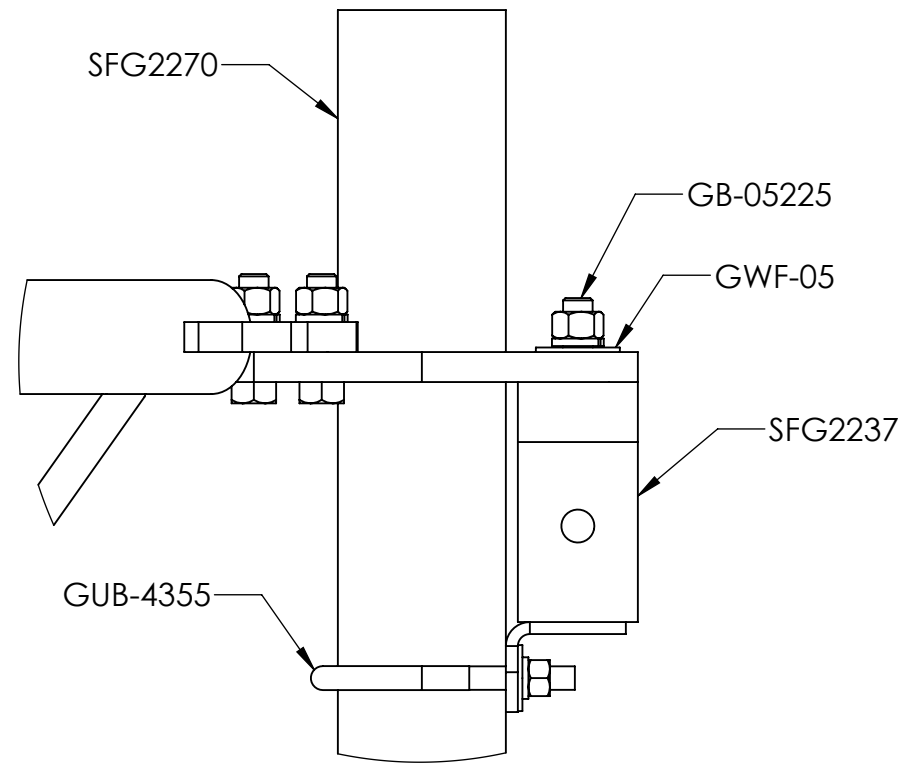
3

2

1

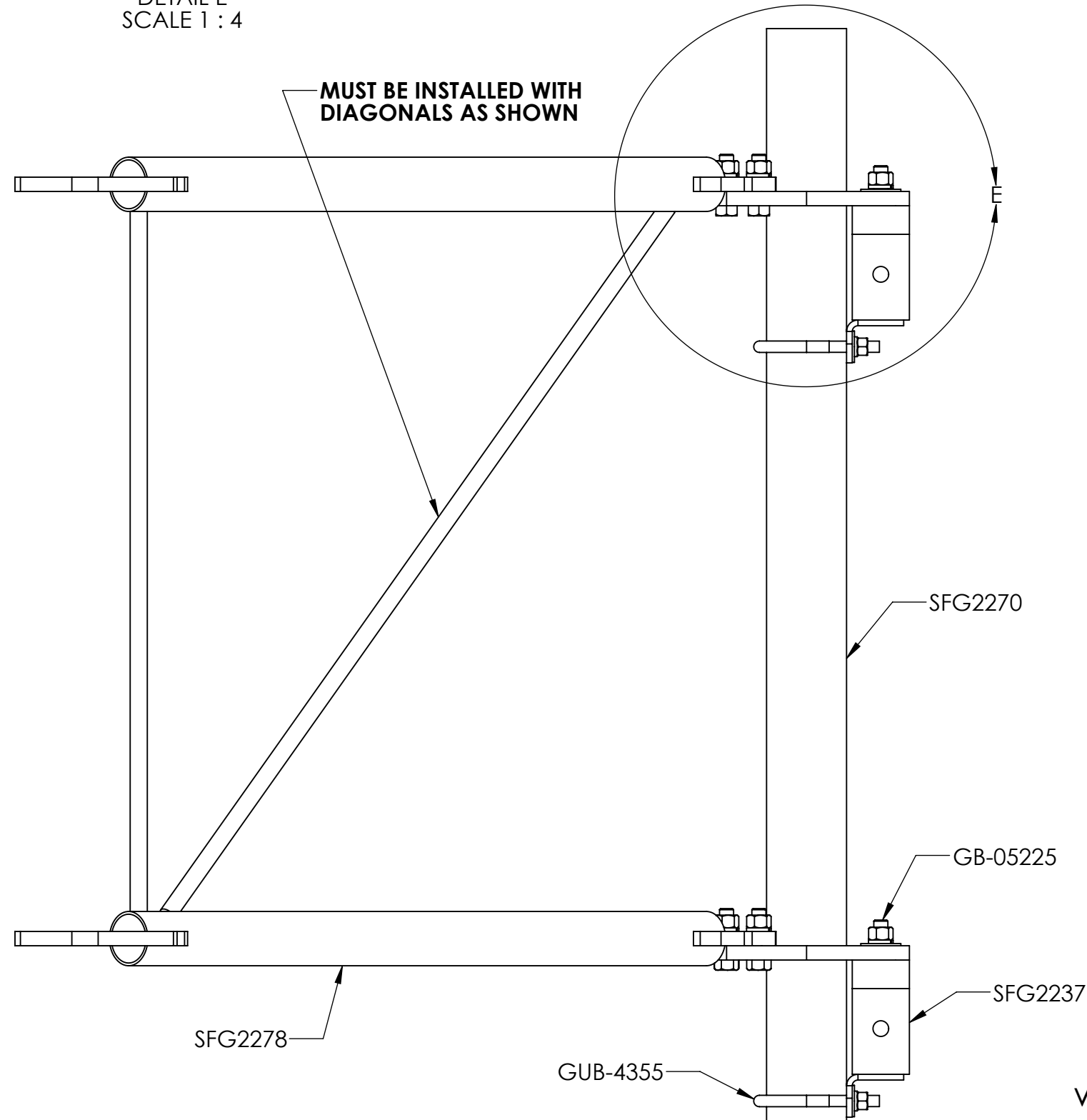
NOTES:

STEP 2: FOR "CT" ASSEMBLIES, ATTACH AZIMUTH/TAPER BRACKET (SFG2237) TO BACK VERTICAL ARM MOUNT (SFG2270) USING BOLT KITS (GB-05225) & FLAT WASHERS (GWF-05). ALSO USE U-BOLTS (GUB-4355) FOR ATTACHING.



DETAIL E
SCALE 1 : 4

**MUST BE INSTALLED WITH
DIAGONALS AS SHOWN**



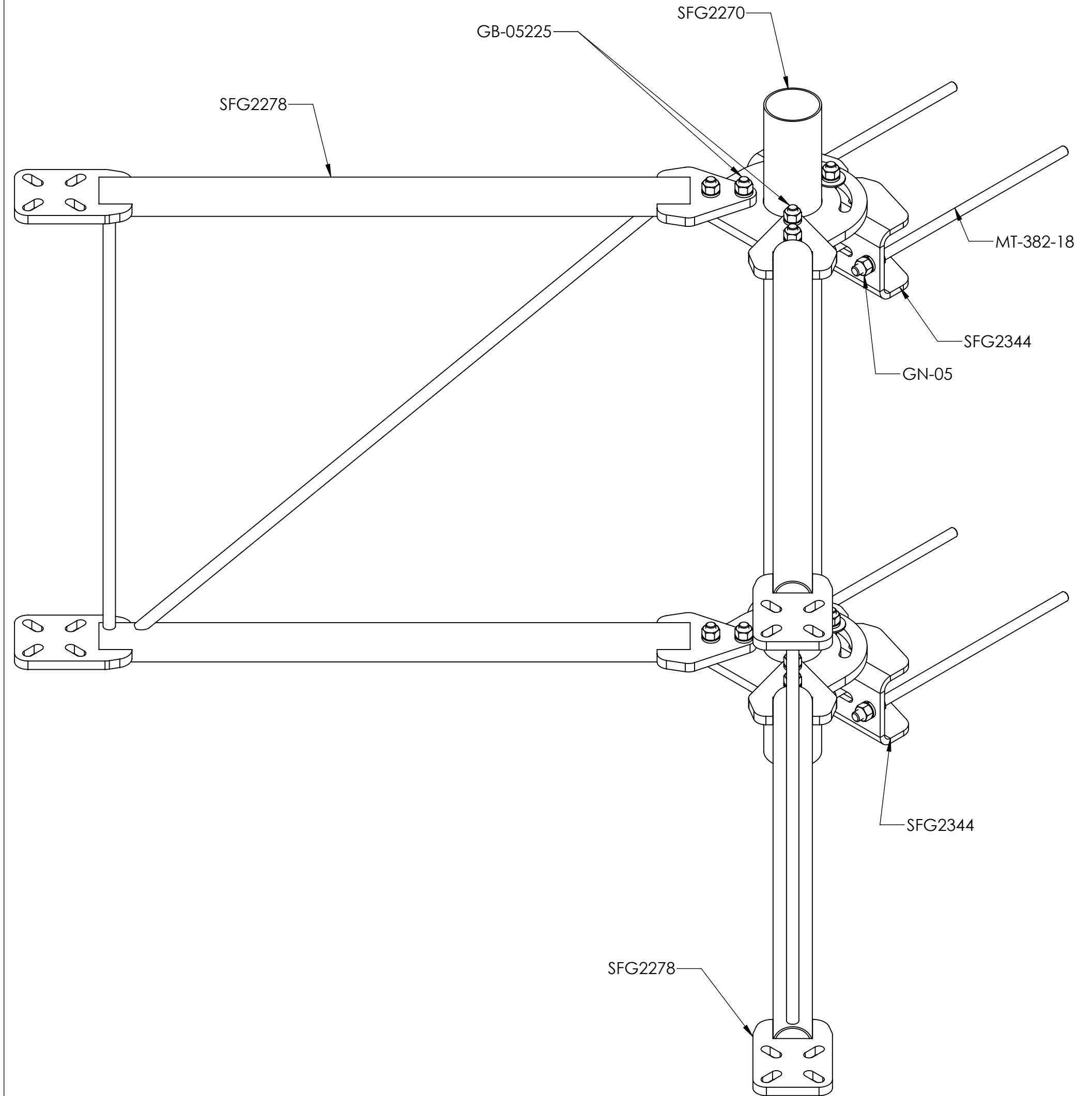
**SIDE VIEW
FOR "CT" ASSEMBLIES**

www.Talleycom.com | Sales@Talleycom.com | 800.949.7079



© 2018 CommScope, Inc.

STEP 2: FOR "CG" ASSEMBLIES, ATTACH BRACKET, FRONT (SFG2344) TO BACK VERTICAL ARM MOUNT (SFG2270) USING BOLT KITS (GB-05225) & FLAT WASHERS (GWF-05). ALSO USE U-BOLTS (GUB-53560) FOR ATTACHING.



**SIDE VIEW
FOR "CG" ASSEMBLIES**

PATENT PENDING

COMMSCOPE, INC. OF NORTH CAROLINA				
TITLE SFG2C SECTOR FRAME				
SIZE C	SCALE 1:6	DOCUMENT NO. SFG2C SERIES		
DRAWING		VERSION	STATUS	REVISION
SHEET		01	RE	H
5 OF 8				

4

3

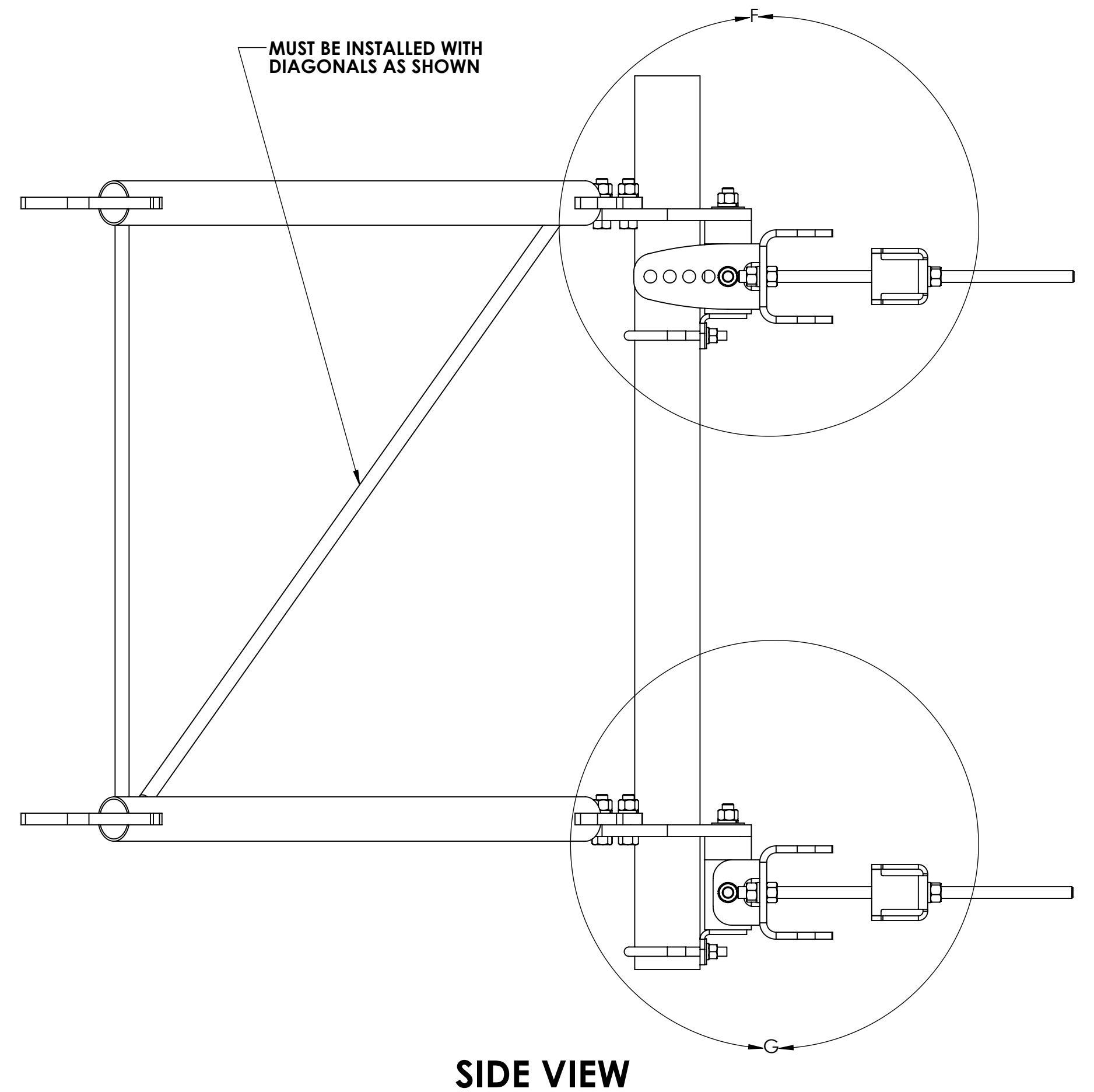
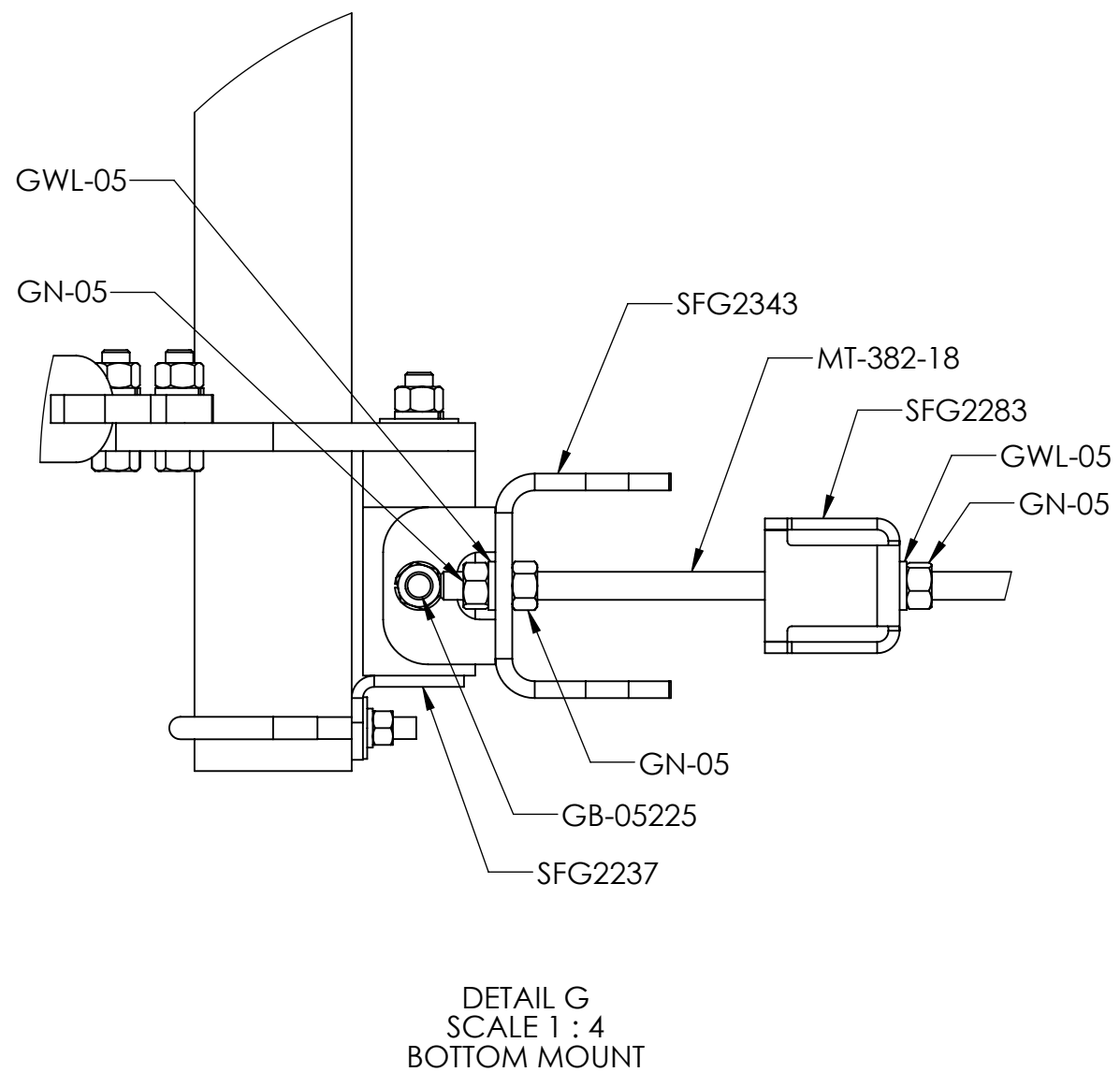
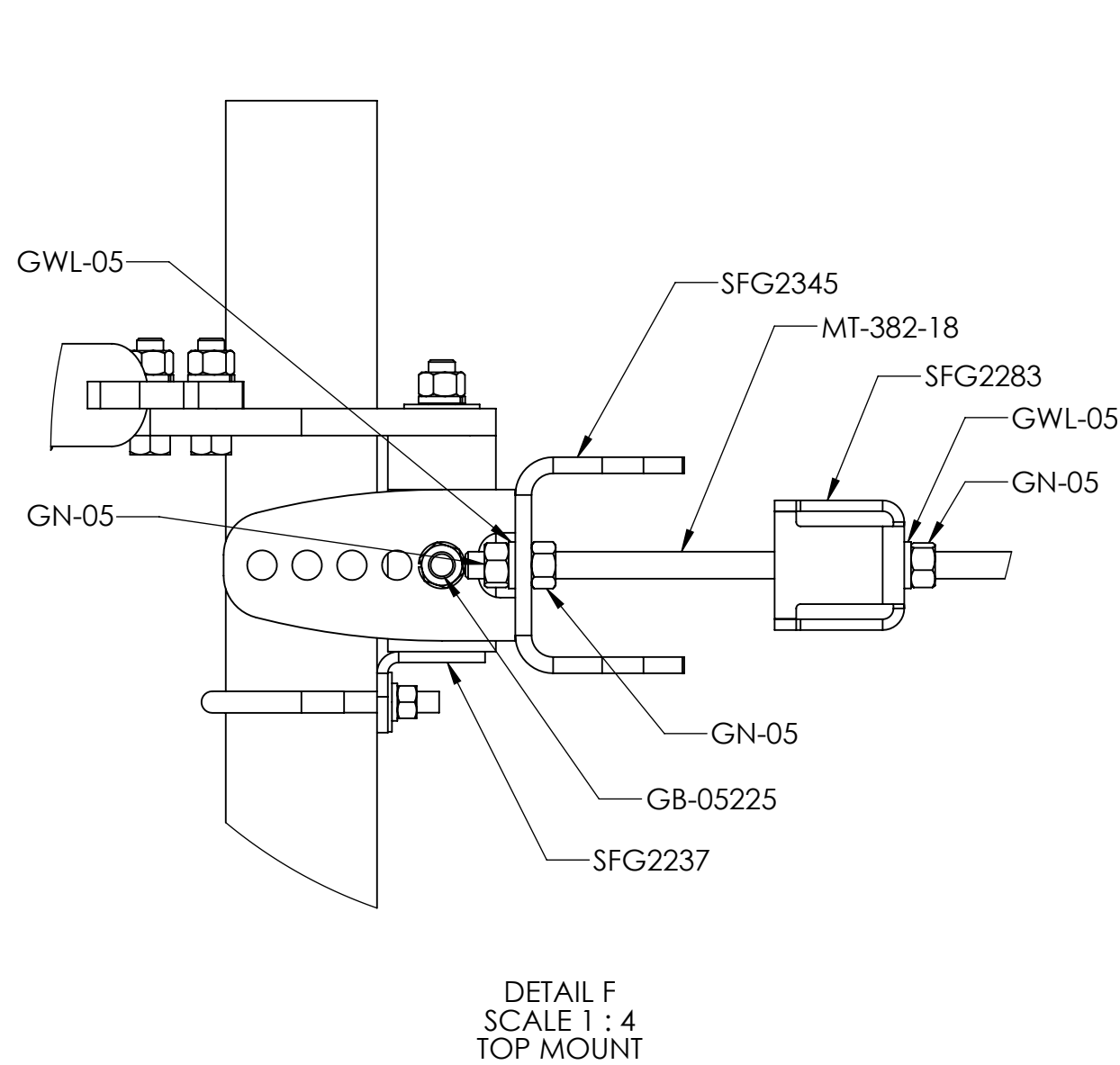
2

1

NOTES:



STEP3: FOR ALL ASSEMBLIES, AT THE TOP, ATTACH TOP TAPER BRACKET (SFG2345) TO AZIMUTH/TAPER BRACKET (SFG2237) USING BOLT KITS (GB-05225). AT THE BOTTOM, ATTACH LOWER TOWER LEG BRACKET (SFG2343) TO AZIMUTH/TAPER BRACKET (SFG2237) USING BOLT KITS (GB-05225).



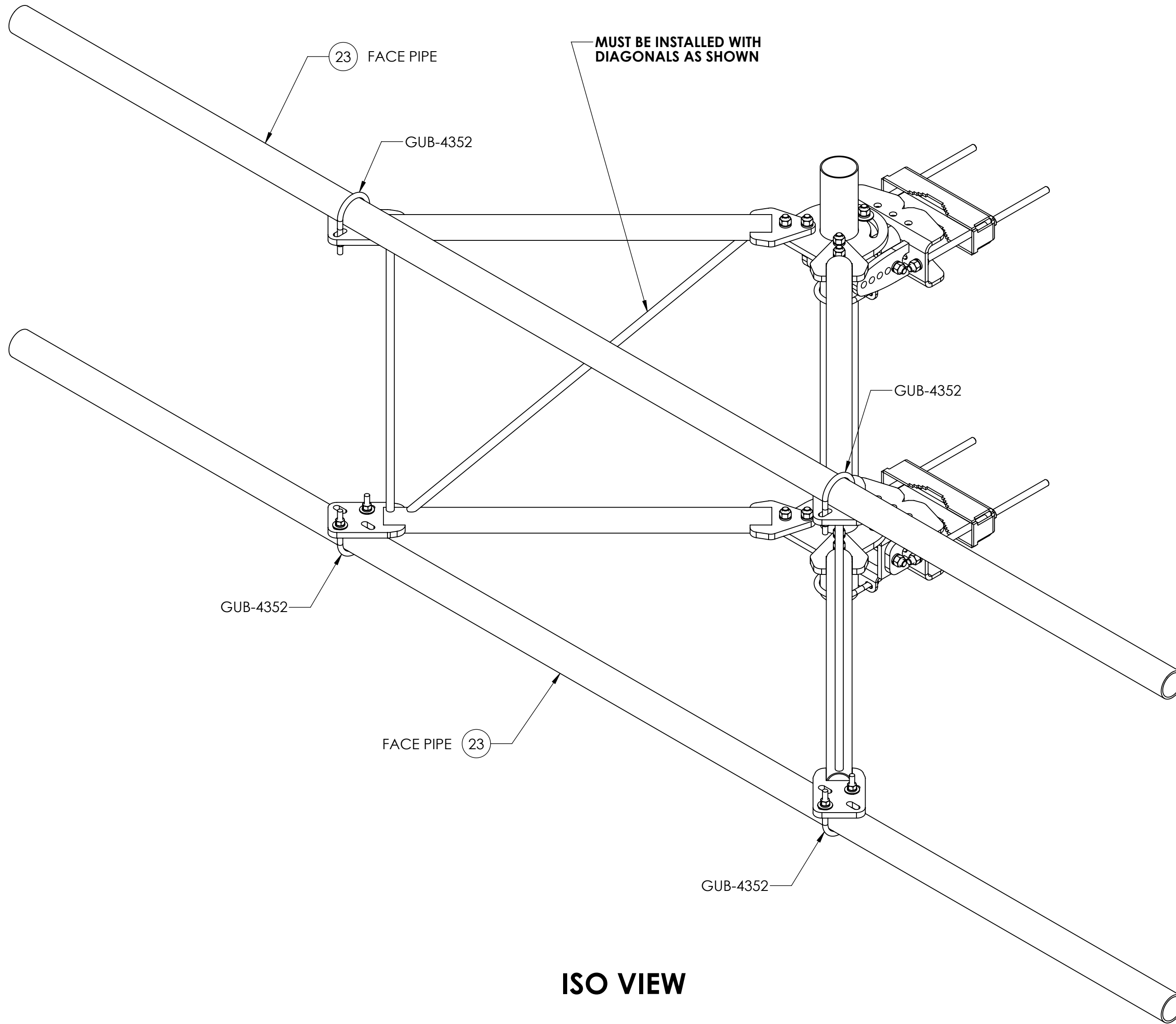
PATENT PENDING

COMMSCOPE, INC. OF NORTH CAROLINA				
TITLE SFG2C SECTOR FRAME				
SIZE C	SCALE 1:6	DOCUMENT NO. SFG2C SERIES		
		DRAWING		SHEET
		VERSION 01	STATUS RE	REVISION H
				6 OF 8

NOTES:



STEP 4: ATTACH FACE PIPES TO STANDOFF ARMS USING U-BOLTS (GUB-4352).



PATENT PENDING

COMMSCOPE, INC. OF NORTH CAROLINA				
TITLE SFG2C SECTOR FRAME				
SIZE C	SCALE 1:8	DOCUMENT NO. SFG2C SERIES		
		DRAWING		SHEET
		VERSION	STATUS	REVISION
		01	RE	H
				7 OF 8

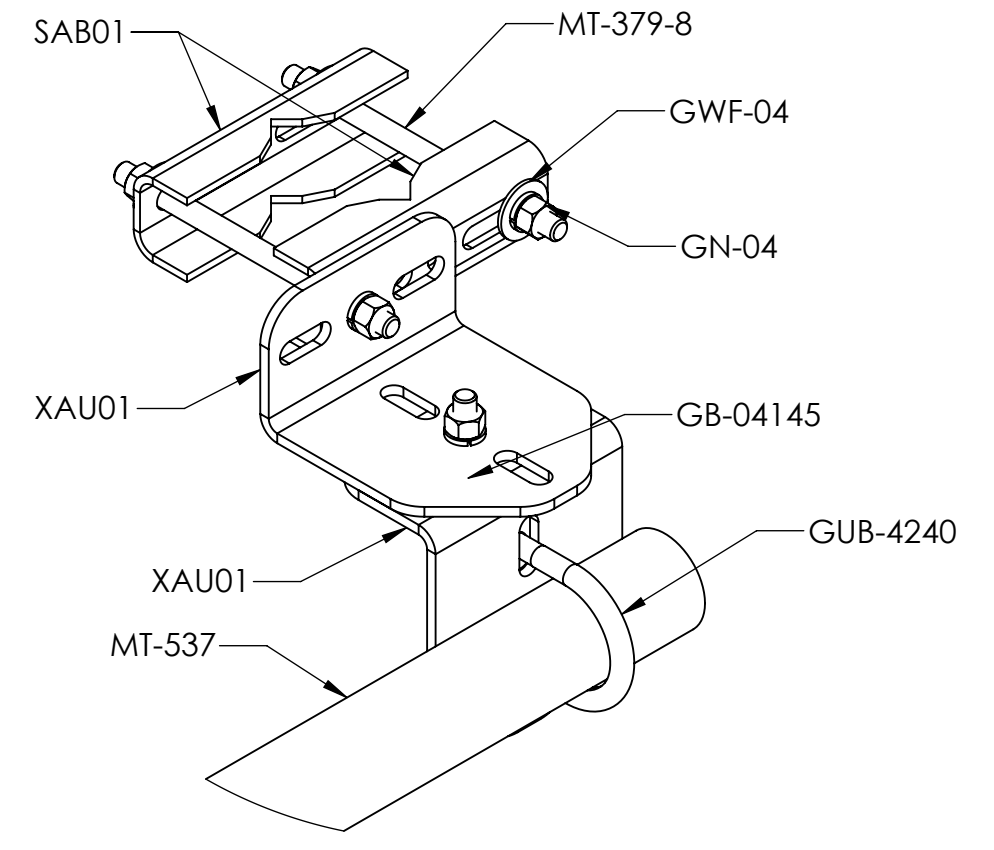
4

3

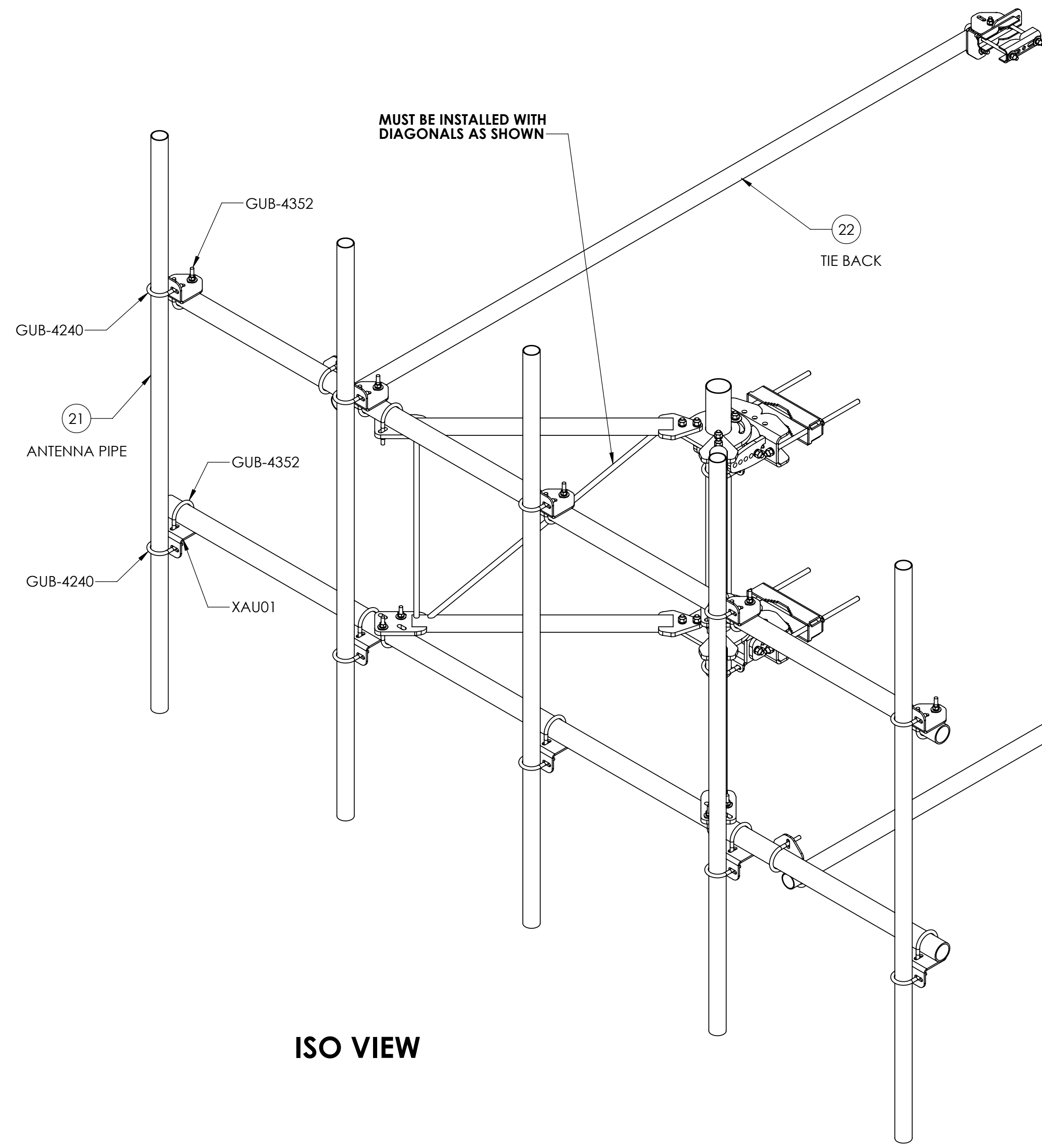
2

1

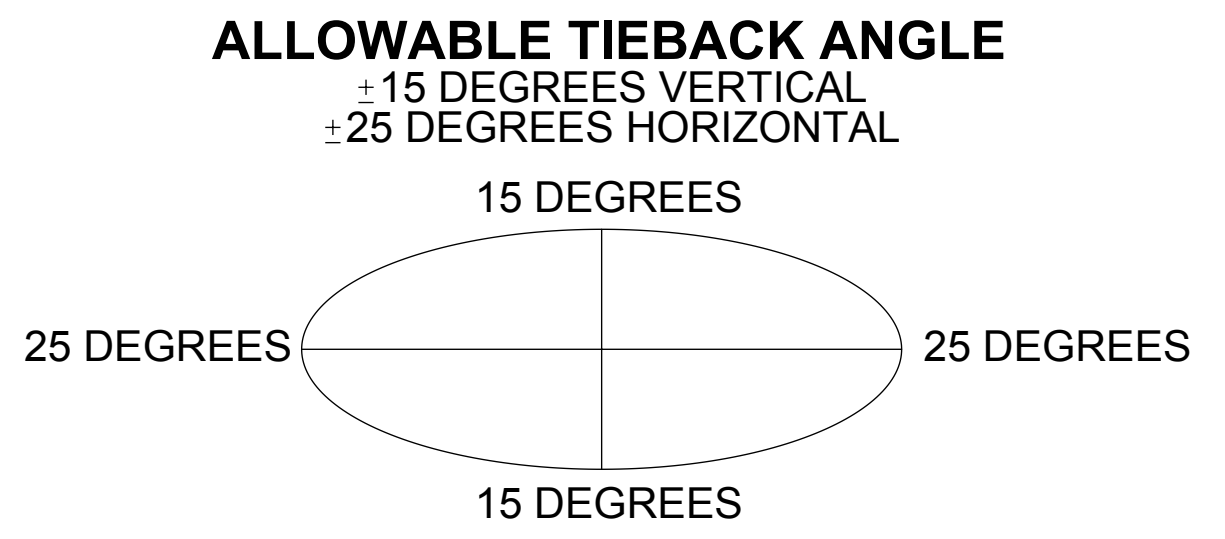
NOTES:
STEP 5: ATTACH ANTENNA PIPES & TIE BACK PIPES TO FACE PIPES USING CROSSOVER ANGLES, (XAU01) AND U-BOLTS (GUB-4240 & GUB-4352).



DETAIL H
SCALE 1 : 4



ISO VIEW



PATENT PENDING

www.Talleycom.com | Sales@Talleycom.com | 800.949.7079



COMMSCOPE, INC. OF NORTH CAROLINA				
TITLE SFG2C SECTOR FRAME				
SIZE C	SCALE 1:10	DOCUMENT NO. SFG2C SERIES		
DRAWING		REVISION		SHEET
VERSION 01	STATUS RE	REVISION H	8 OF 8	

© 2018 CommScope, Inc.

4

3

2

1