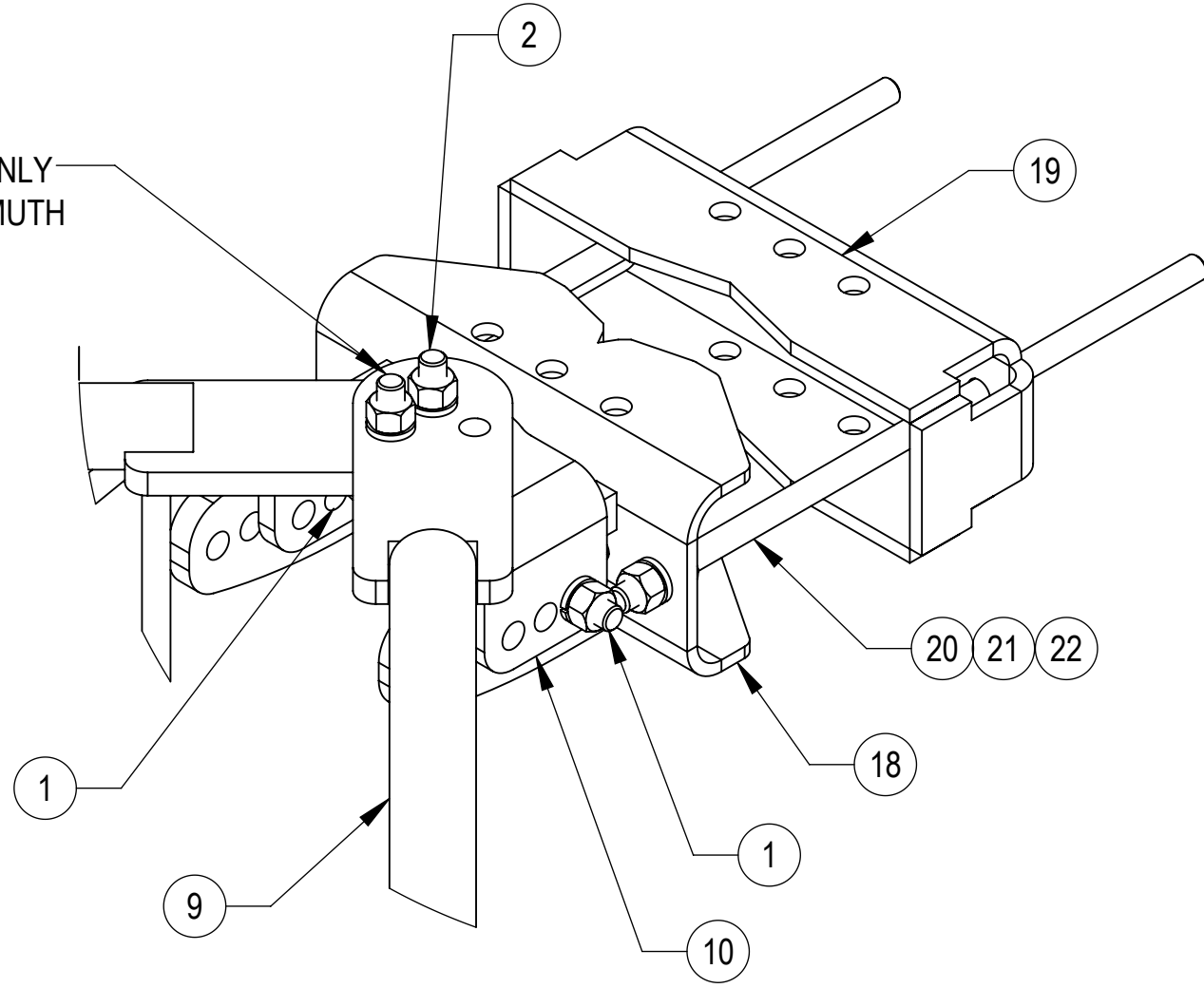
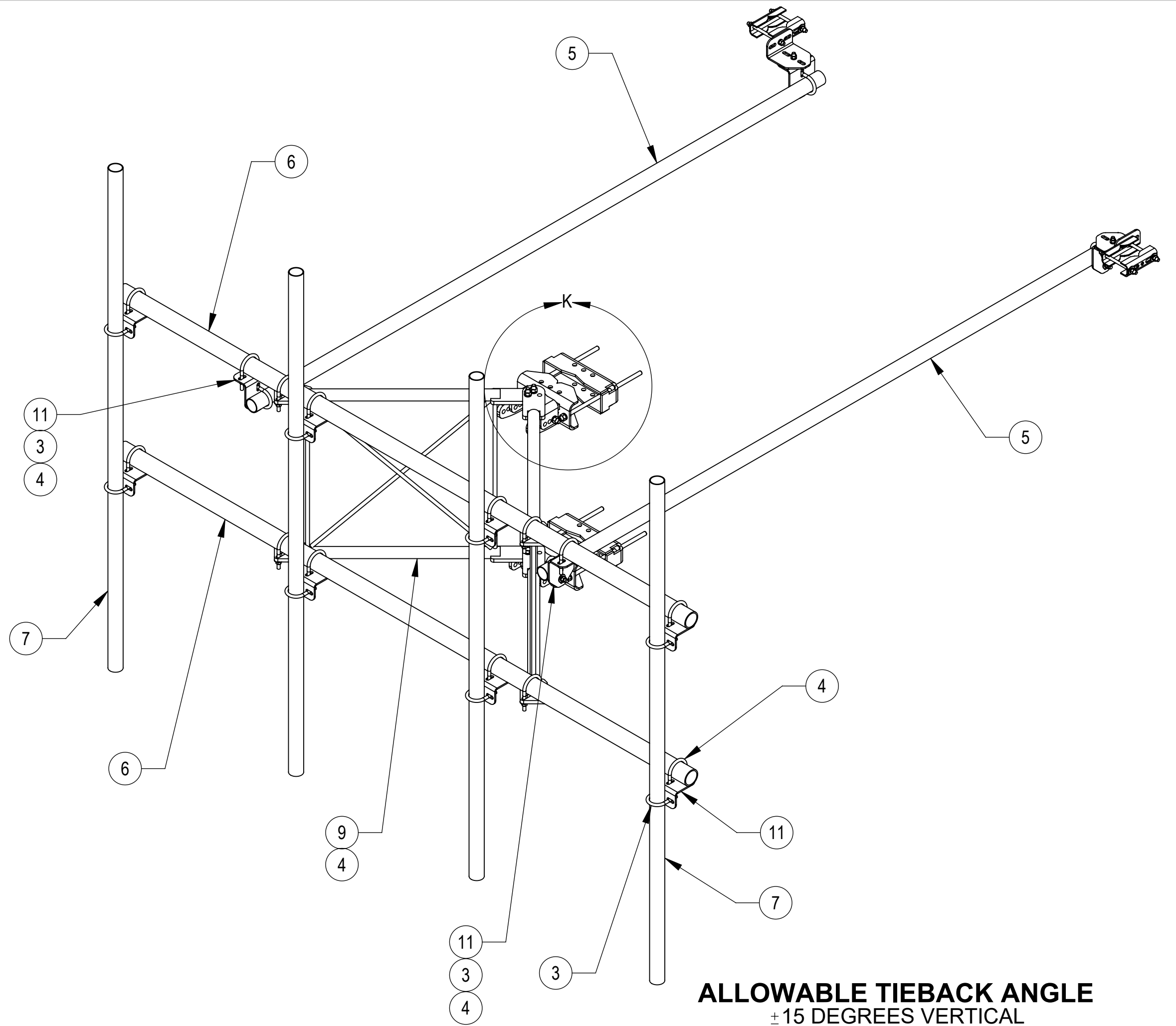


FOR INSTALLATION ONLY
REMOVE TO SET AZIMUTH

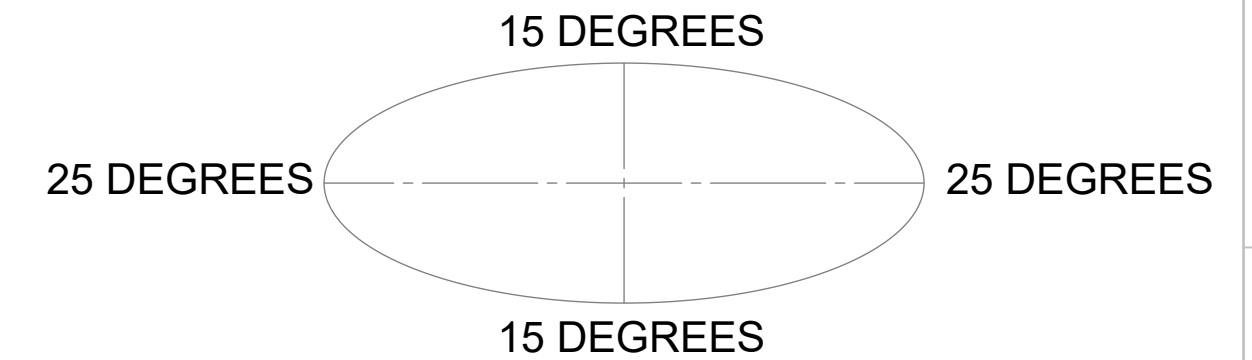


DETAIL K
SCALE 1 : 4

SFG2BT-10-4-96 FOR REFERENCE ONLY



ALLOWABLE TIEBACK ANGLE
±15 DEGREES VERTICAL
±25 DEGREES HORIZONTAL



COMPONENT PART NUMBERS PROVIDED FOR ASSEMBLY PURPOSES;
INDIVIDUAL COMPONENTS MAY BE SHIPPED AS PARTS WITHIN AN INCLUDED KIT.

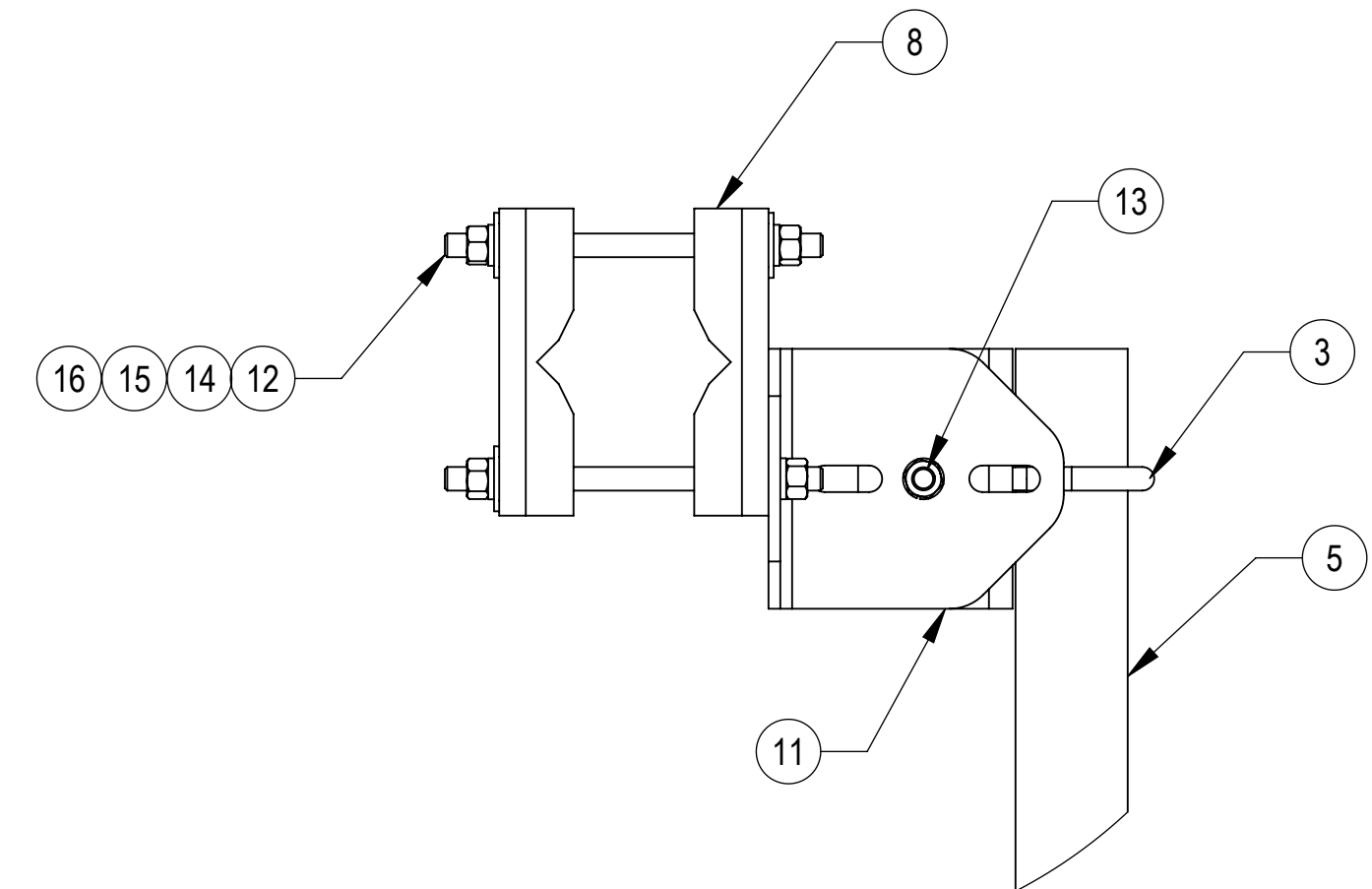
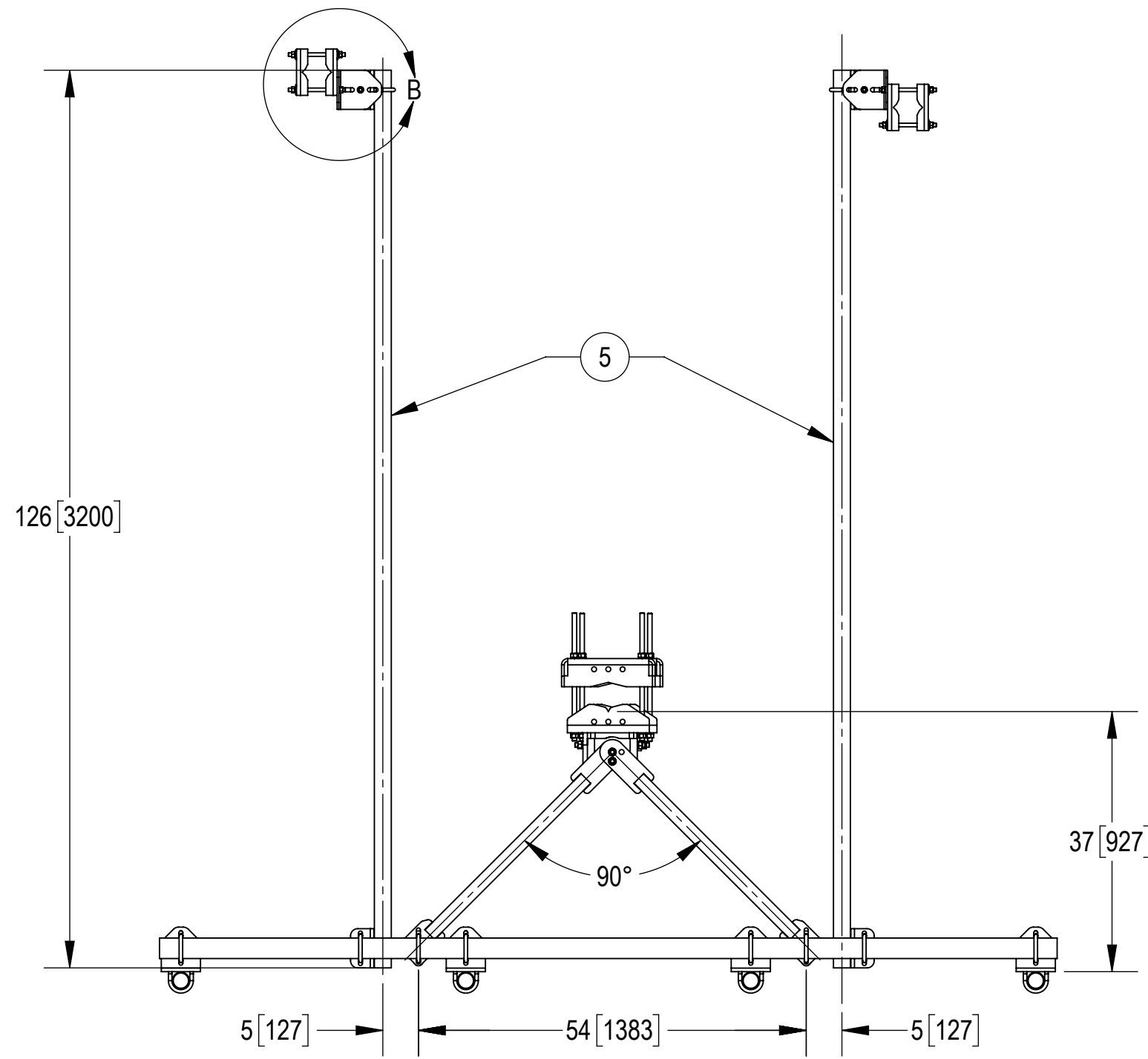
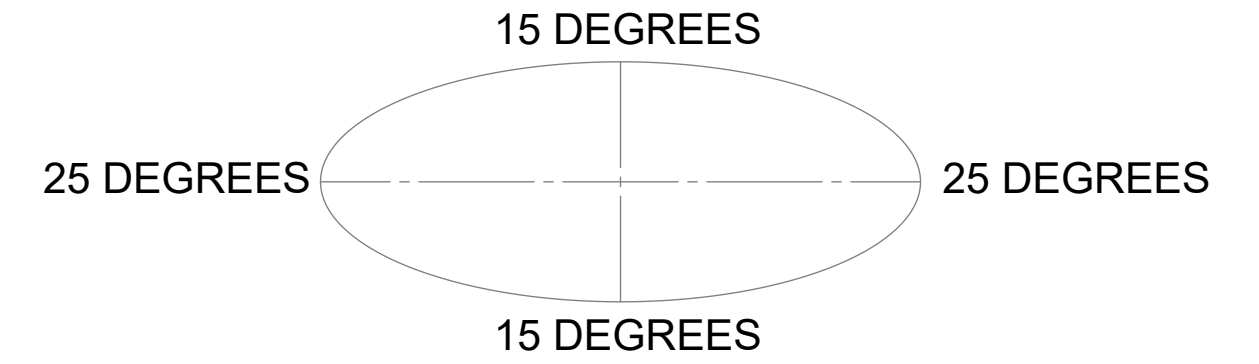
ITEM	PART NO.	DESCRIPTION	QTY.	WEIGHT	NOTE NO.
1	GB-05225	5/8" X 2-1/4" GALV BOLT KIT	8	0.28 LBS	J
2	GB-05305	5/8" X 3" GALV BOLT KIT	4	0.35 LBS	
3	GUB-4240	1/2" X 2-1/2" X 4" GALV U-BOLT	12	0.56 LBS	
4	GUB-4352	1/2" X 3" X 5-1/4" GALV U-BOLT	14	0.71 LBS	
5	MT-537	Ø 2.375" OD X 126" PIPE	2	30.45 LBS	
6	MT-546-126	PIPE, 2.875"OD X 126"	2	61.05 LBS	
7	MT-651-96	2.375" OD X 96" PIPE	4	23.05 LBS	
8	SAB01	FORMED CLAMP	4	1.35 LBS	
9	SFV01	WELDMENT, SF-V STANDOFF ARM	2	38.32 LBS	
10	SFV02	SFV AZIMUTH BRACKET	2	5.91 LBS	
11	XAU01	ANGLE, CROSSOVER, 1.9-3.5" X 1.9-3.5" OD	14	2.98 LBS	
12	MT-379-8	1/2" X 8" GALV THREADED ROD	4	0.45 LBS	
13	GB-04145	1/2" X 1-1/2" GALV BOLT KIT	2	0.13 LBS	
14	GWF-04	1/2" GALV FLAT WASHER	8	0.04 LBS	
15	GWL-04	1/2" GALV LOCK WASHER	10	0.01 LBS	
16	GN-04	1/2" GALV HEX NUT	10	0.04 LBS	
17	SFG2343	WELDMENT, LOWER, TOWER LEG BRACKET	1	12.41 LBS	
18	SFG2345	WELDMENT, TOP TAPER BRACKET	1	16.32 LBS	
19	SFG2284	BRACKET, FRONT TOWER LEG, BARE	2	14.69 LBS	J
20	MT-382-18	5/8" X 18" GALV THREADED ROD	4	1.55 LBS	
21	GWL-05	5/8" GALV LOCK WASHER	8	0.03 LBS	
22	GN-05	5/8" GALV HEX NUT	12	0.08 LBS	

COMMSCOPE, INC. OF NORTH CAROLINA				
TITLE SFG2B SECTOR FRAME				
SIZE C	SCALE 1:32	DOCUMENT NO. SFG2B SERIES		
DRAWING		VERSION	STATUS	REVISION
		02	RE	J
				SHEET 2 OF 7

NOTES:

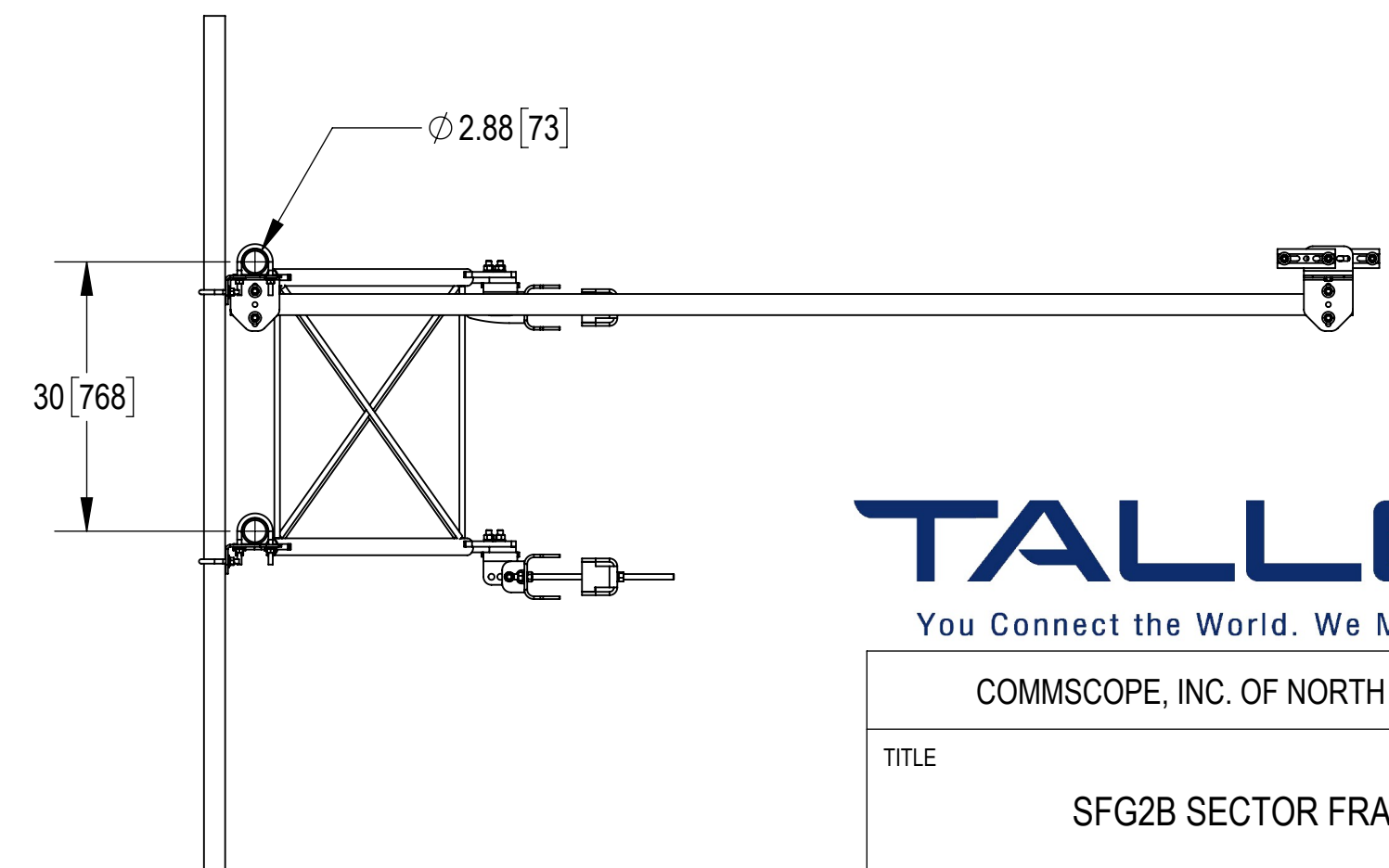
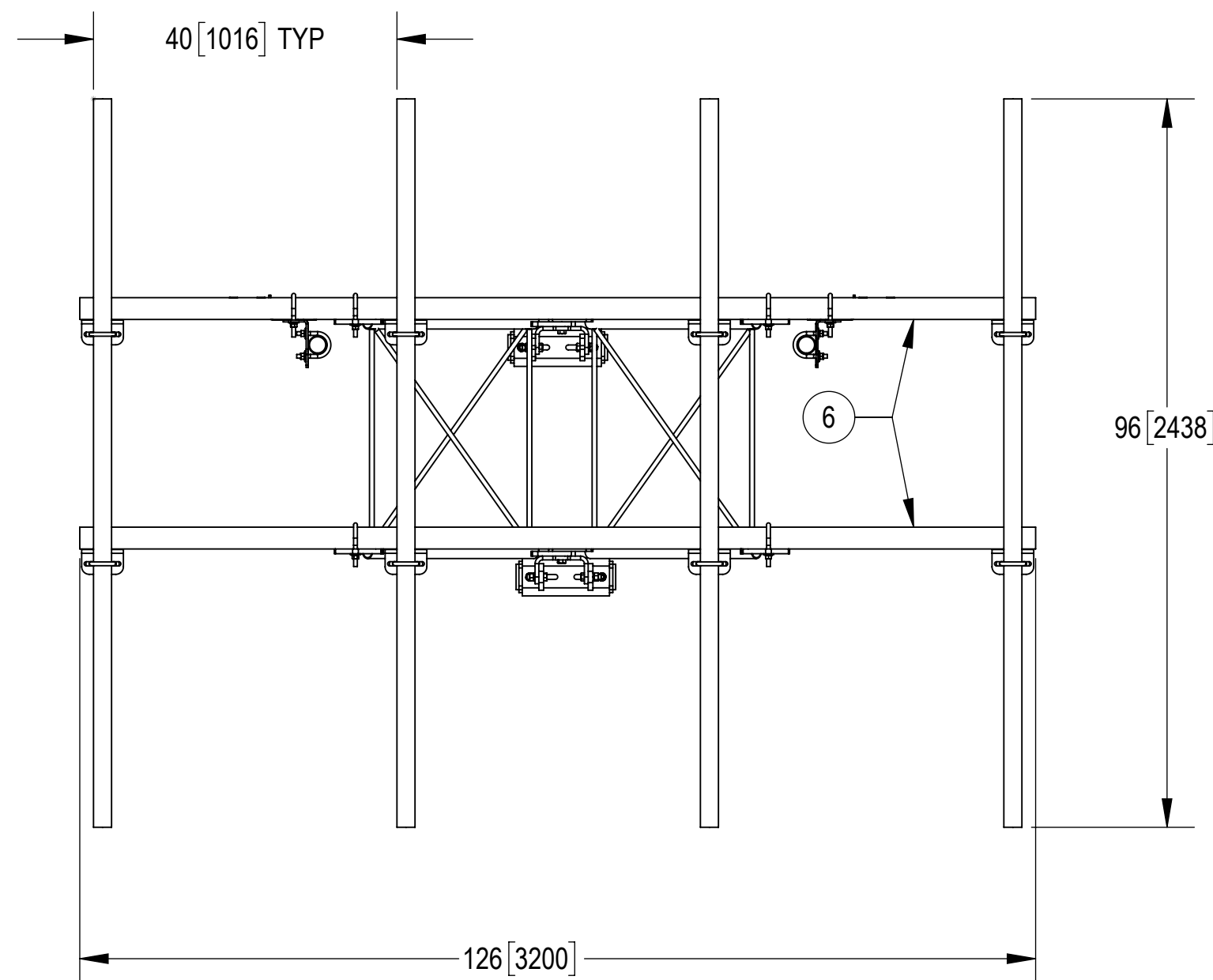
ALLOWABLE TIEBACK ANGLE

+15 DEGREES VERTICAL
±25 DEGREES HORIZONTAL



SFG2BT-10-4-96 FOR REFERENCE ONLY

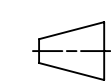
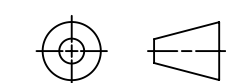
DETAIL B
SCALE 1:4



TALLEY
You Connect the World. We Make it Easy.®

COMMScope, INC. OF NORTH CAROLINA				
TITLE SFG2B SECTOR FRAME				
SIZE C	SCALE 1:20	DOCUMENT NO. SFG2B SERIES		
		DRAWING		SHEET
		VERSION	STATUS	REVISION
		02	RE	J
				3 OF 7

© 2018 CommScope, Inc.



4

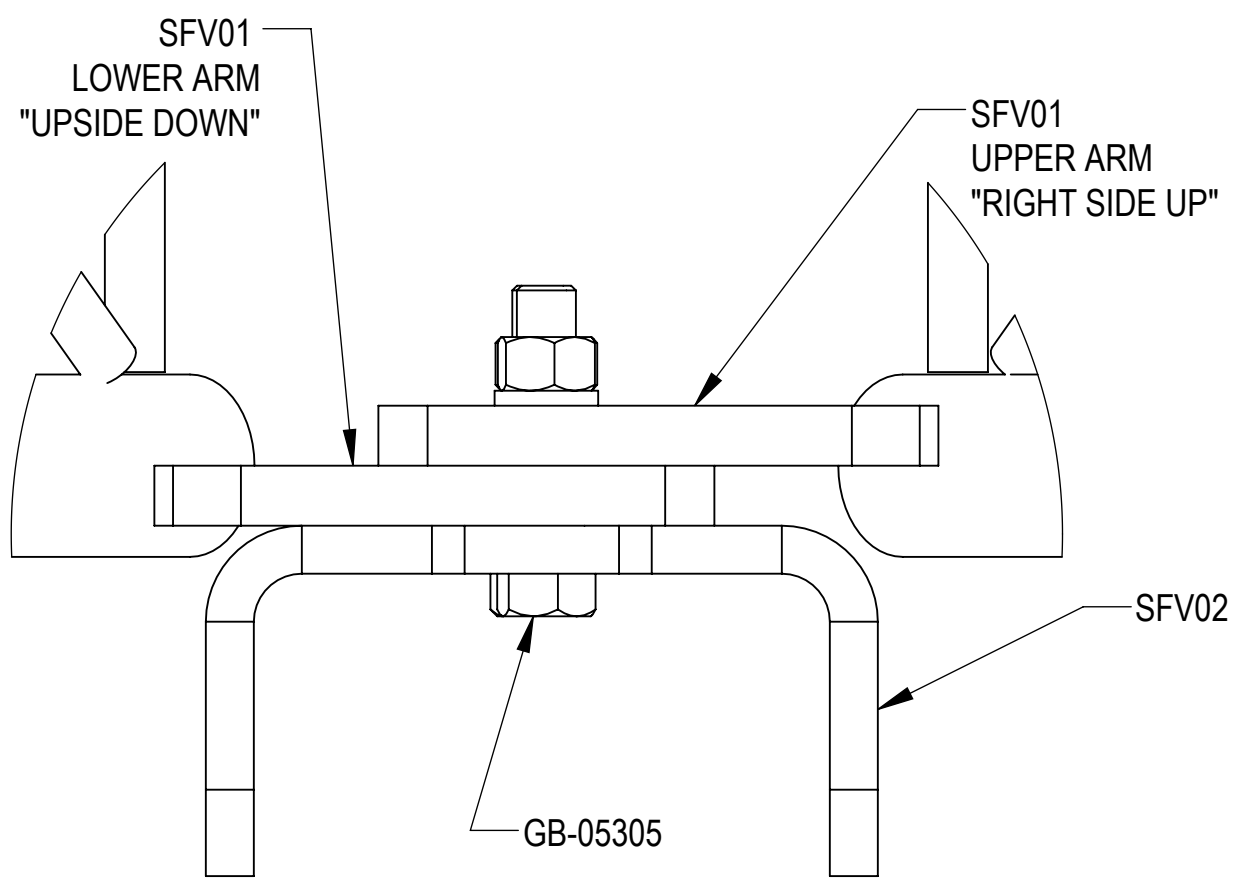
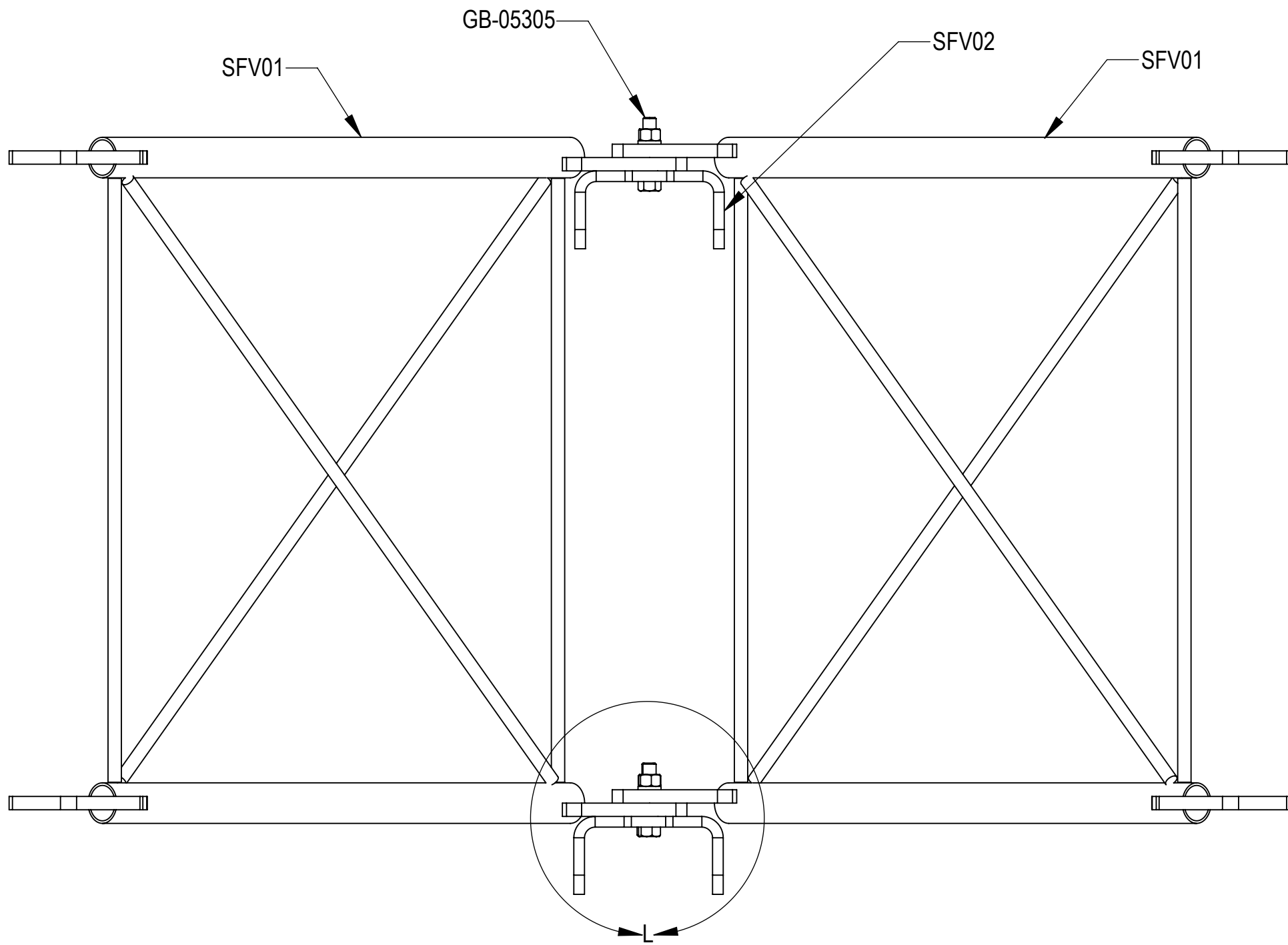
3

2

1

NOTES:

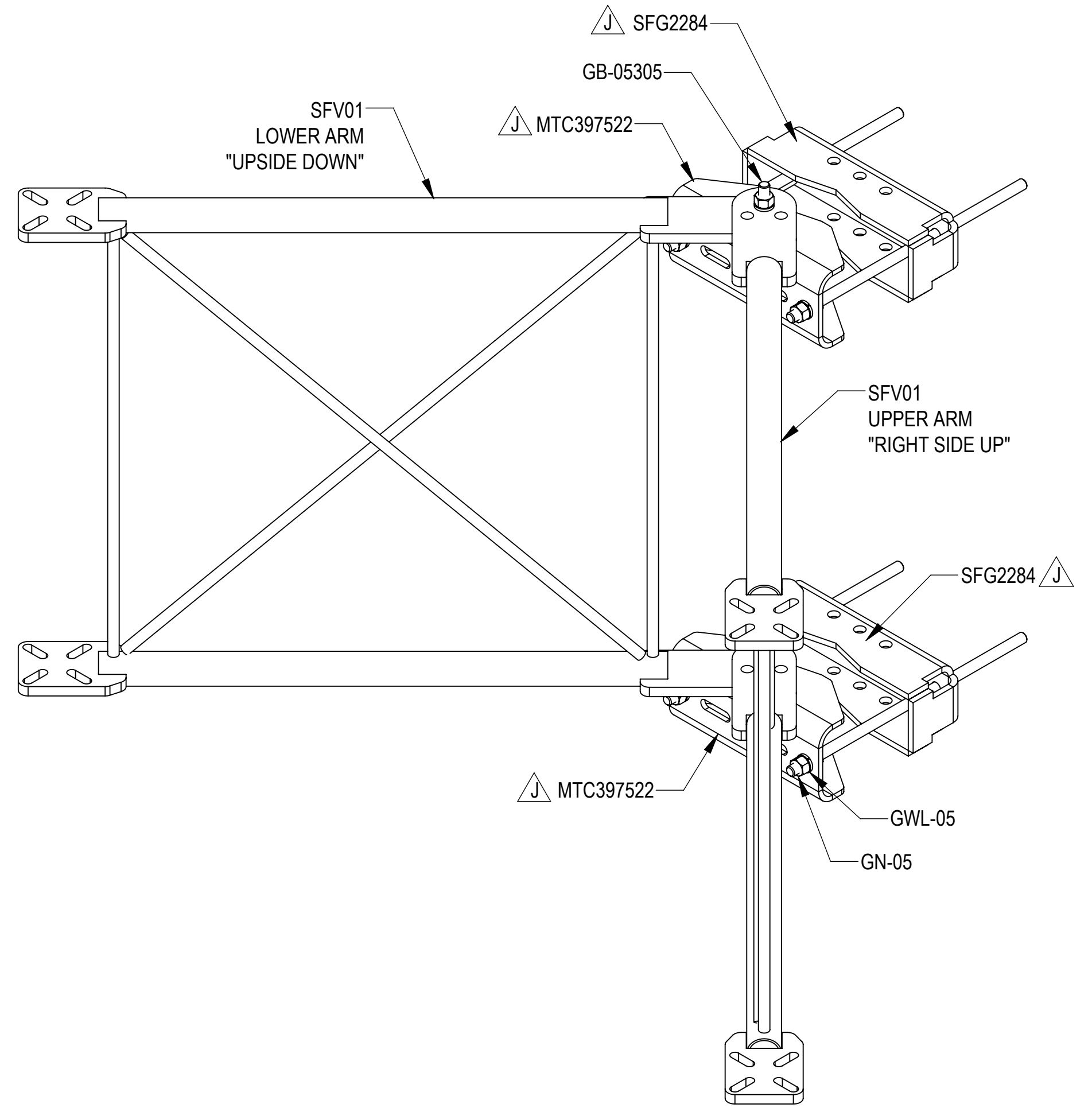
STEP 1: FOR "BT" ASSEMBLIES, ATTACH STANDOFF ARMS (SFV01) TO AZIMUTH BRACKET (SFV02) USING BOLT KIT (GB-05305). STANDOFF ARM ORIENTATION IS CRITICAL! WHEN ASSEMBLED ARMS SHOULD BE LEVEL WITH EACH OTHER.



DETAIL L
SCALE 1:2

ISO VIEW
FOR "BT" ASSEMBLIES

STEP 1: FOR "BG" ASSEMBLIES, ATTACH STANDOFF ARMS (SFV01) TO CLAMP, FRONT MOUNTING (MTC397522) USING BOLT KIT (GB-05305).



ISO VIEW
FOR "BG" ASSEMBLIES



COMMSCOPE, INC. OF NORTH CAROLINA			
TITLE SFG2B SECTOR FRAME			
SIZE C	SCALE 1:6	DOCUMENT NO. SFG2B SERIES	
		DRAWING	
		VERSION 02	STATUS RE
		REVISION J	SHEET 4 OF 7

© 2018 CommScope, Inc.

4

3

2

1

4

3

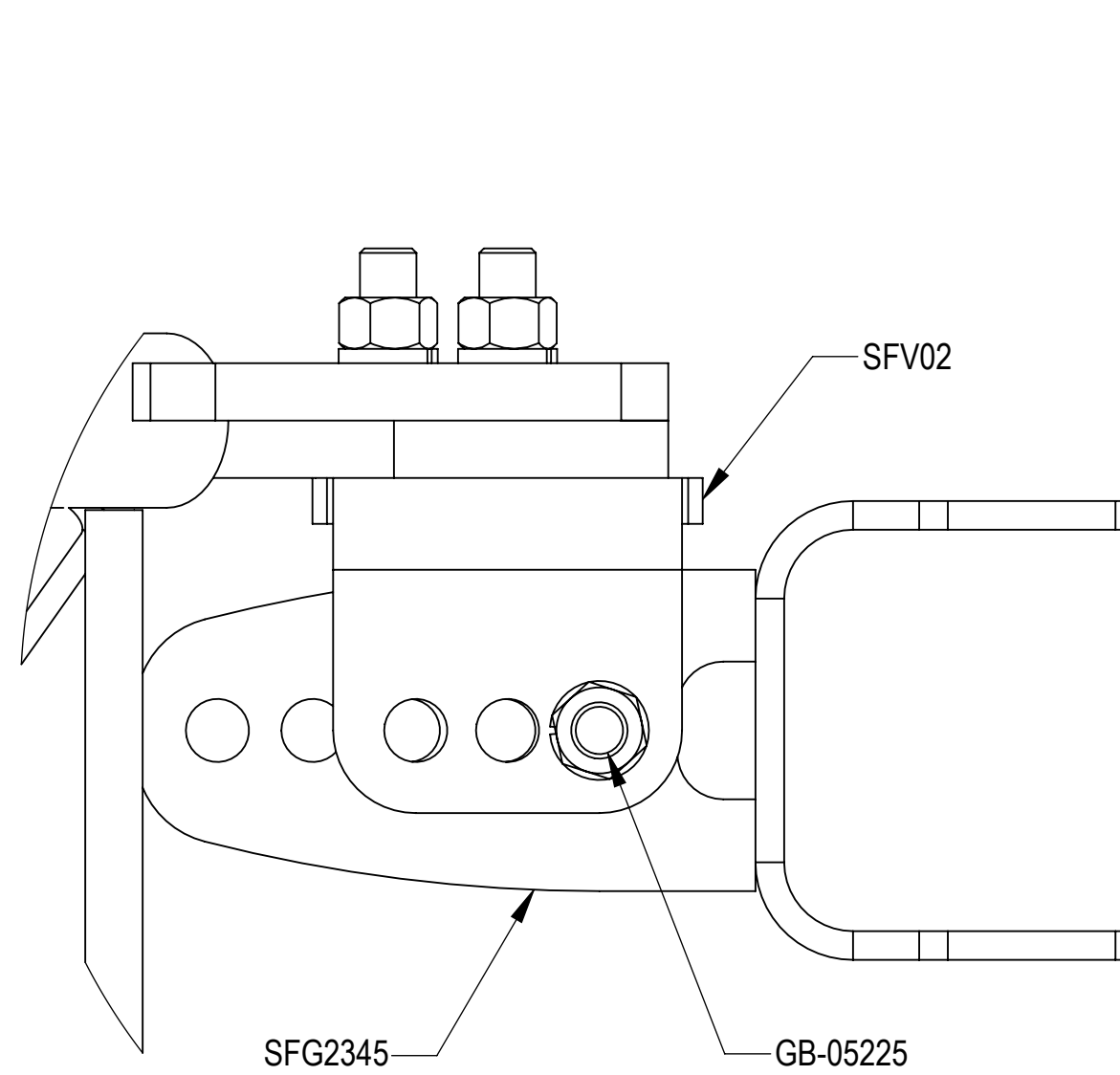
2

1

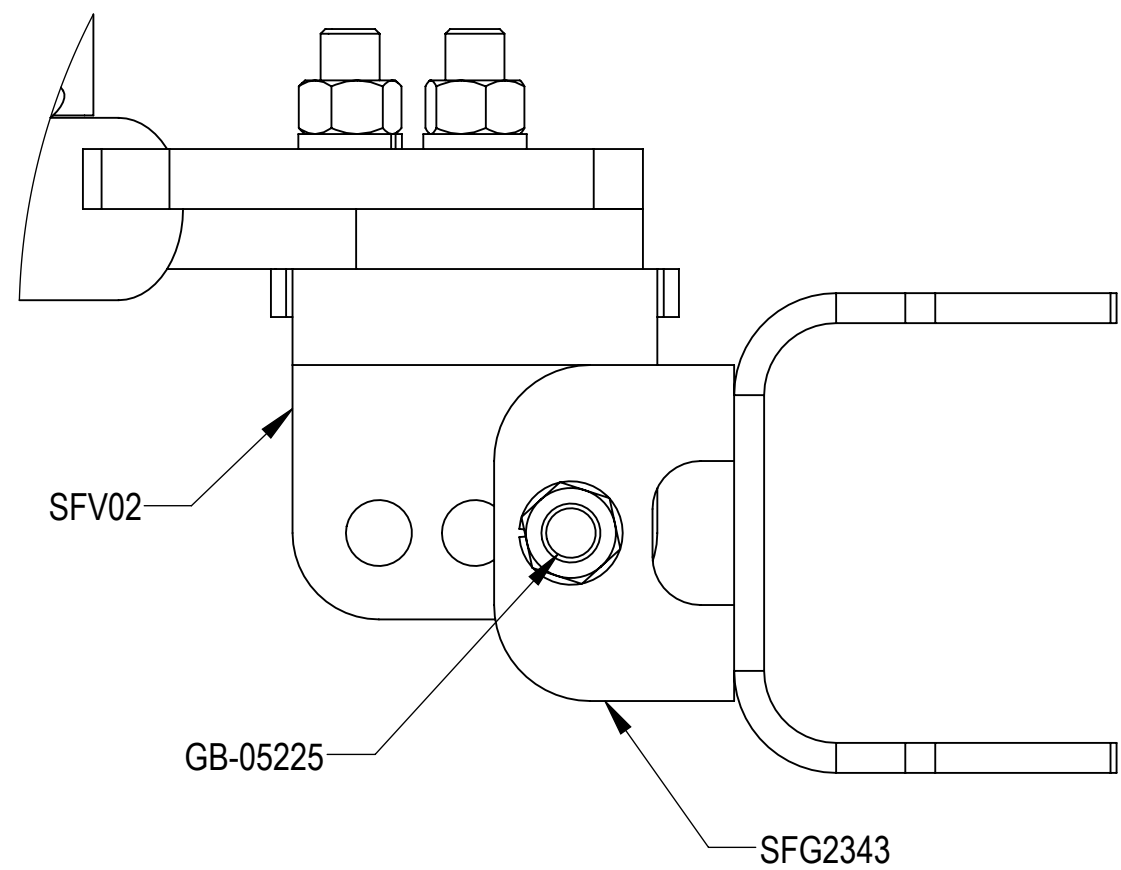
NOTES:

STEP 2: (A) ON TOP FOR "AT" ASSEMBLIES, ATTACH TOP TAPER BRACKET (SFG2345) TO AZIMUTH BRACKET (SFV02) USING BOLT KIT (GB-05225).

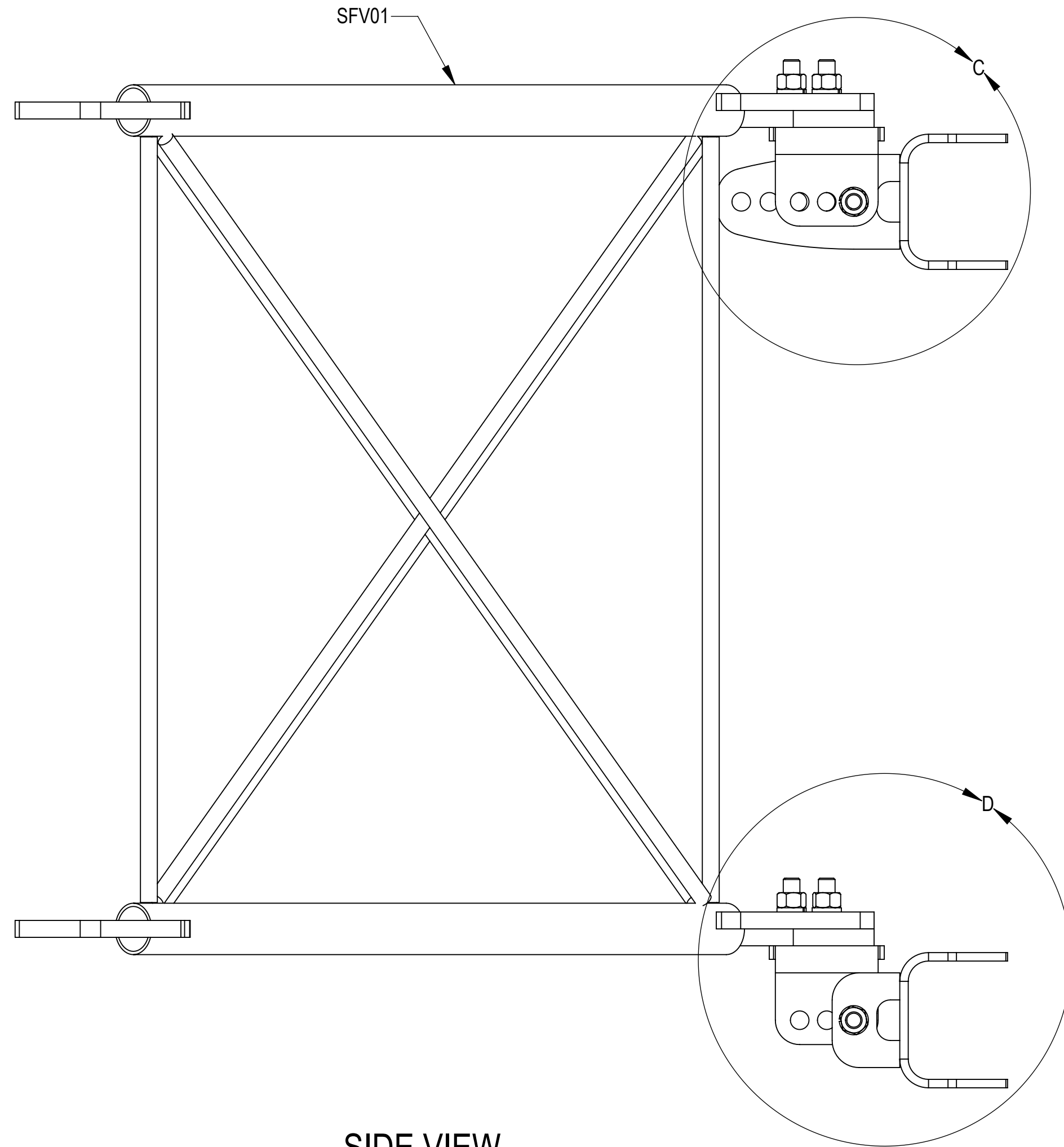
(B) ON BOTTOM FOR "AT" ASSEMBLIES, ATTACH LOWER, TOWER LEG BRACKET (SFG2343) TO AZIMUTH BRACKET (SFV02) USING BOLT KIT (GB-05225).



DETAIL C
SCALE 1 : 2
TOP MOUNT



DETAIL D
SCALE 1 : 2
BOTTOM MOUNT



SIDE VIEW

COMMScope, INC. OF NORTH CAROLINA				
TITLE SFG2B SECTOR FRAME				
SIZE C	SCALE 1:4	DOCUMENT NO. SFG2B SERIES		
		DRAWING		SHEET
		VERSION	STATUS	REVISION
		02	RE	J
				SHEET 5 OF 7

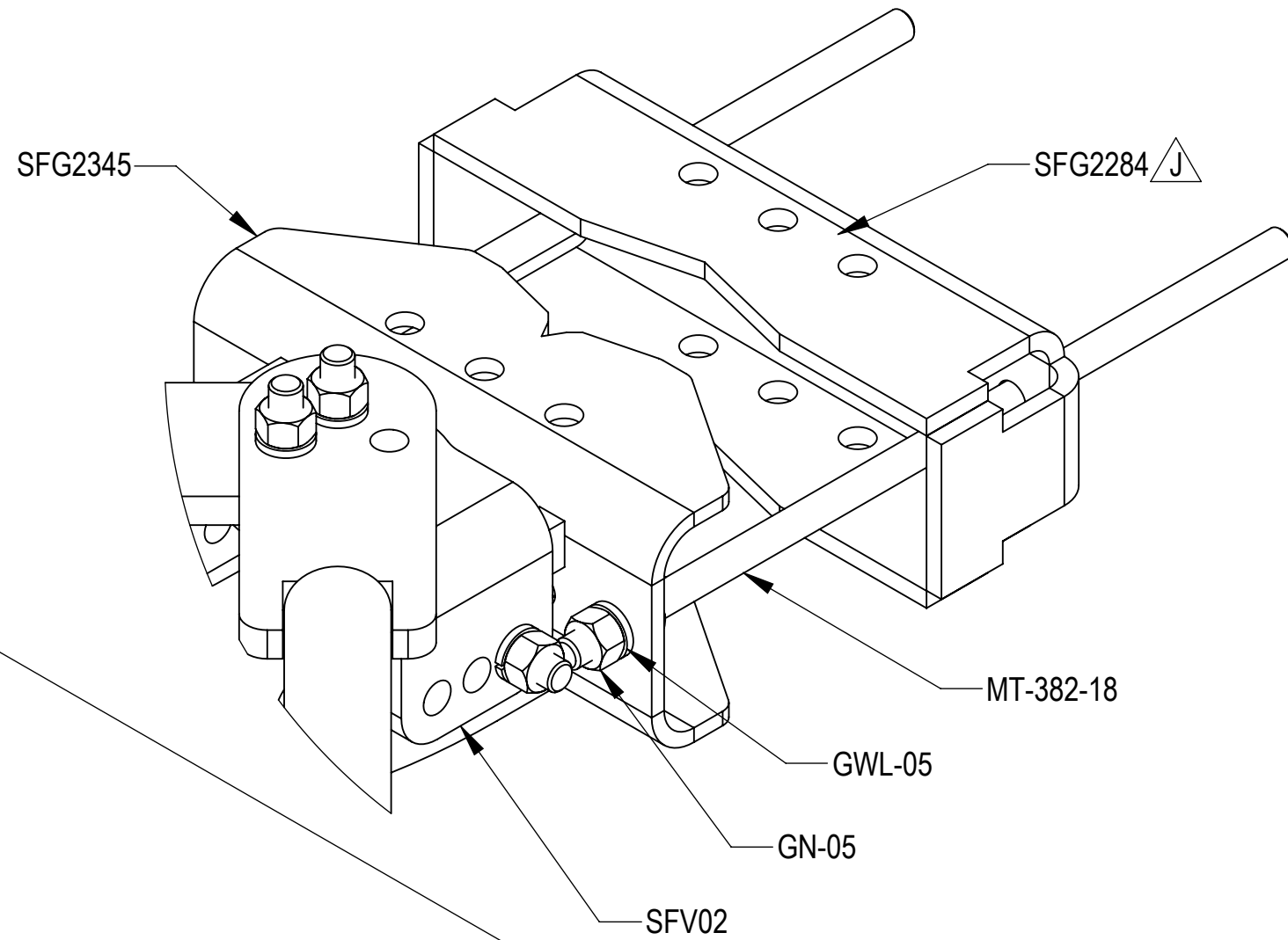
4

3

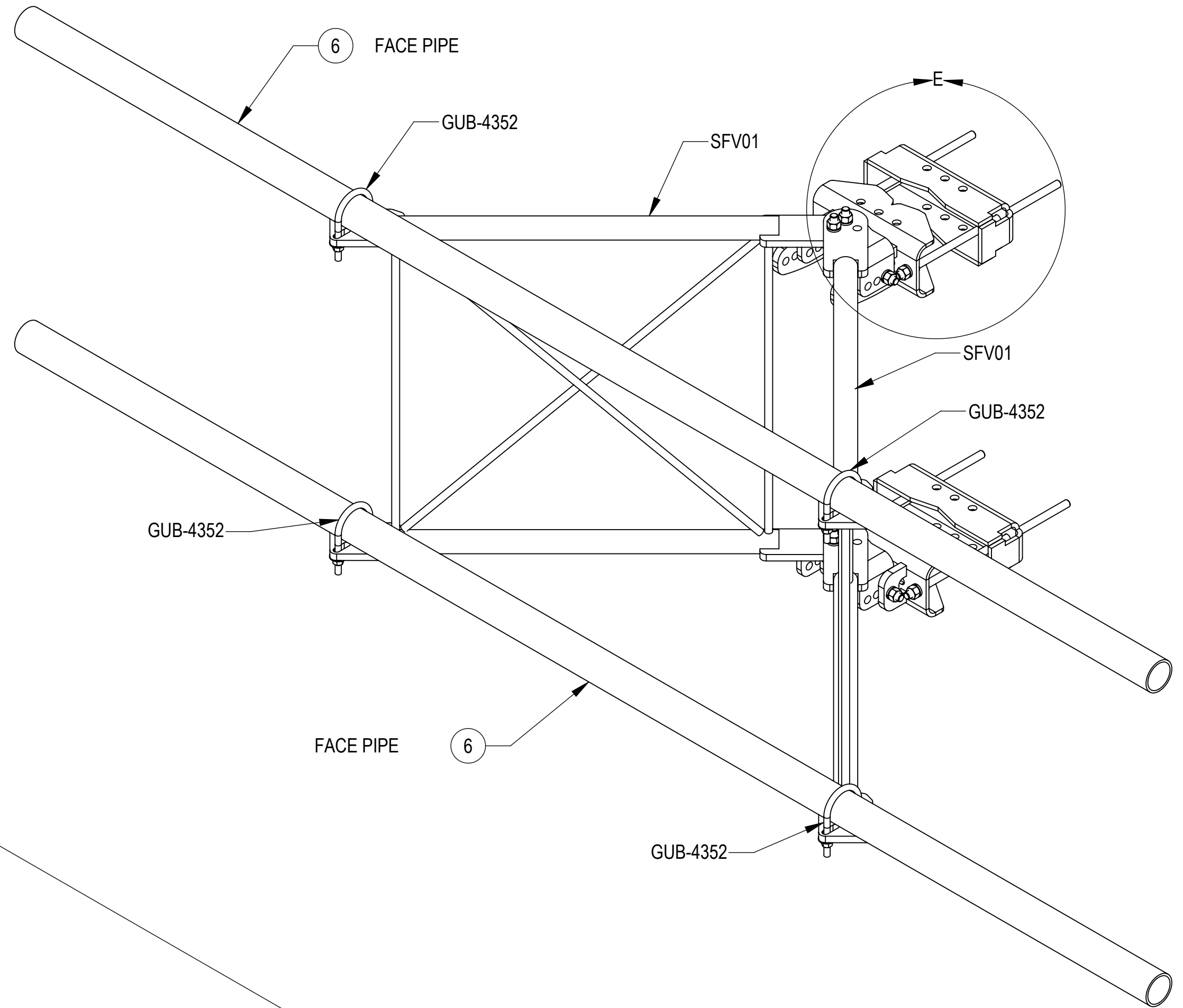
2

1

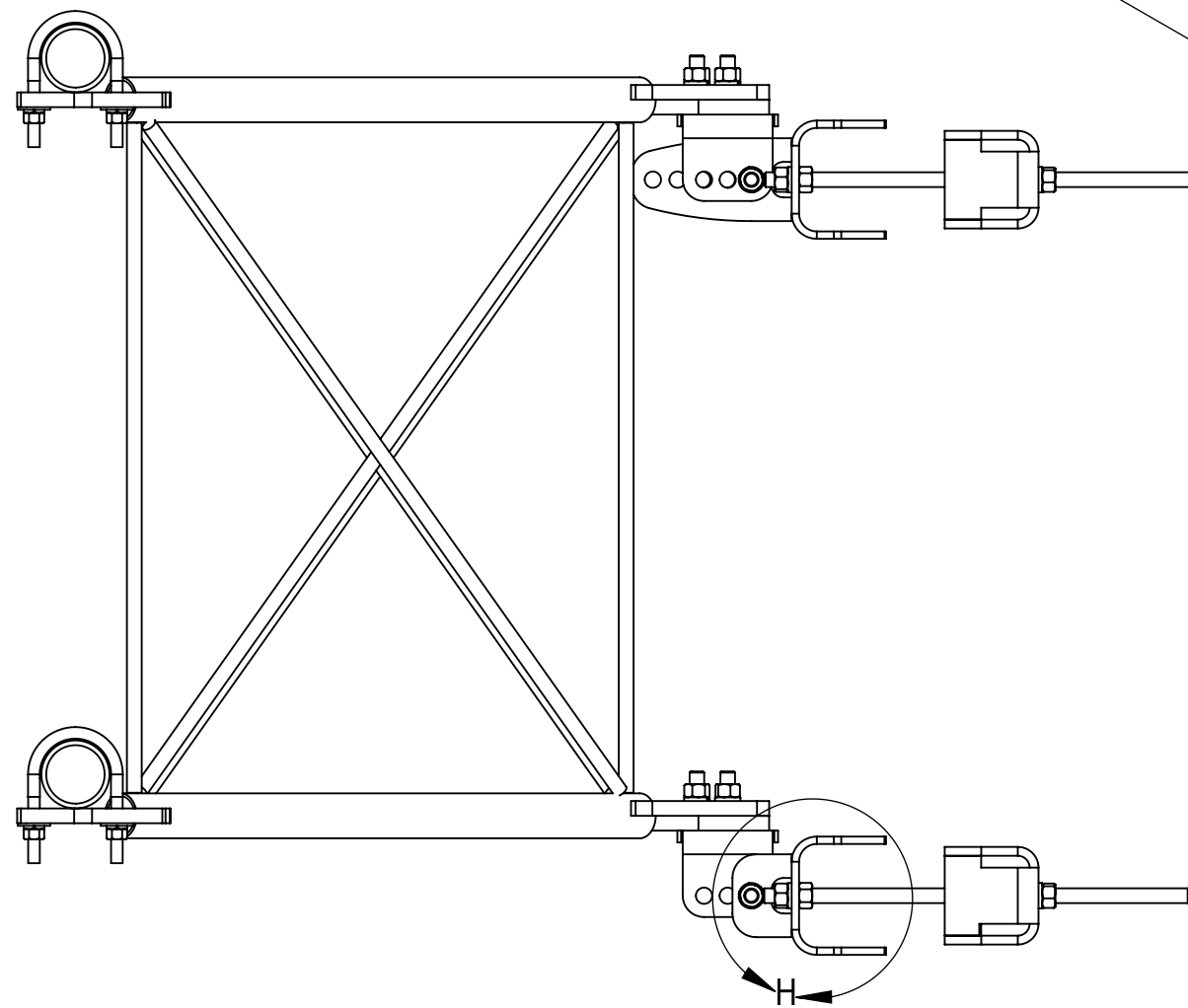
NOTES:
STEP 3: ATTACH FACE PIPES TO STANDOFF ARMS (SFV01) USING U-BOLTS (GUB-4352).



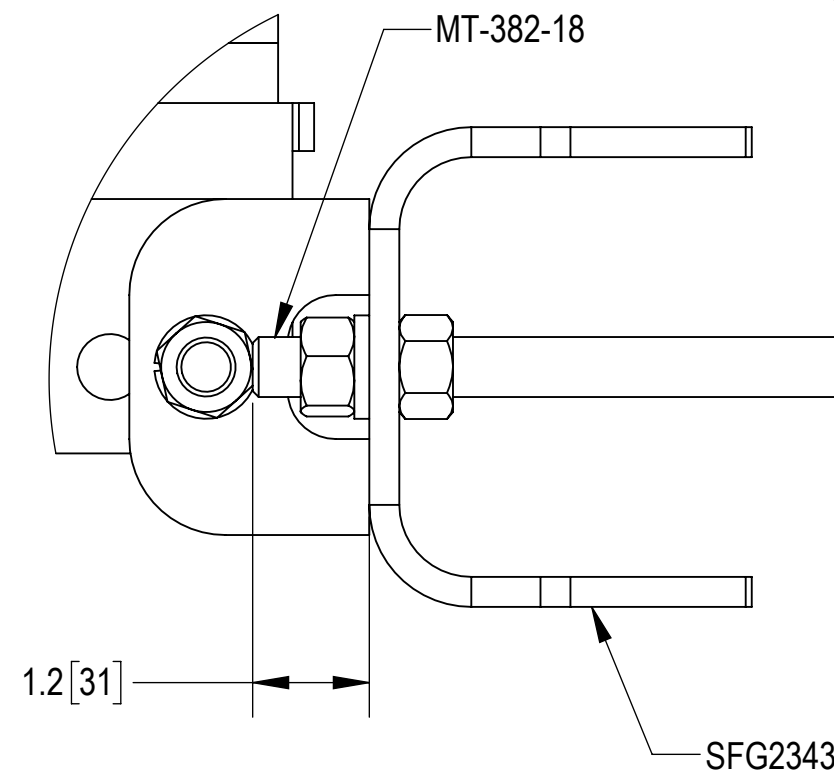
DETAIL E
SCALE 1 : 3



ISO VIEW



SIDE VIEW



DETAIL H
SCALE 1 : 2

COMMSCOPE, INC. OF NORTH CAROLINA				
TITLE SFG2B SECTOR FRAME				
SIZE C	SCALE 1:8	DOCUMENT NO. SFG2B SERIES		
		DRAWING		SHEET
		VERSION 02	STATUS RE	REVISION J
				6 OF 7

4

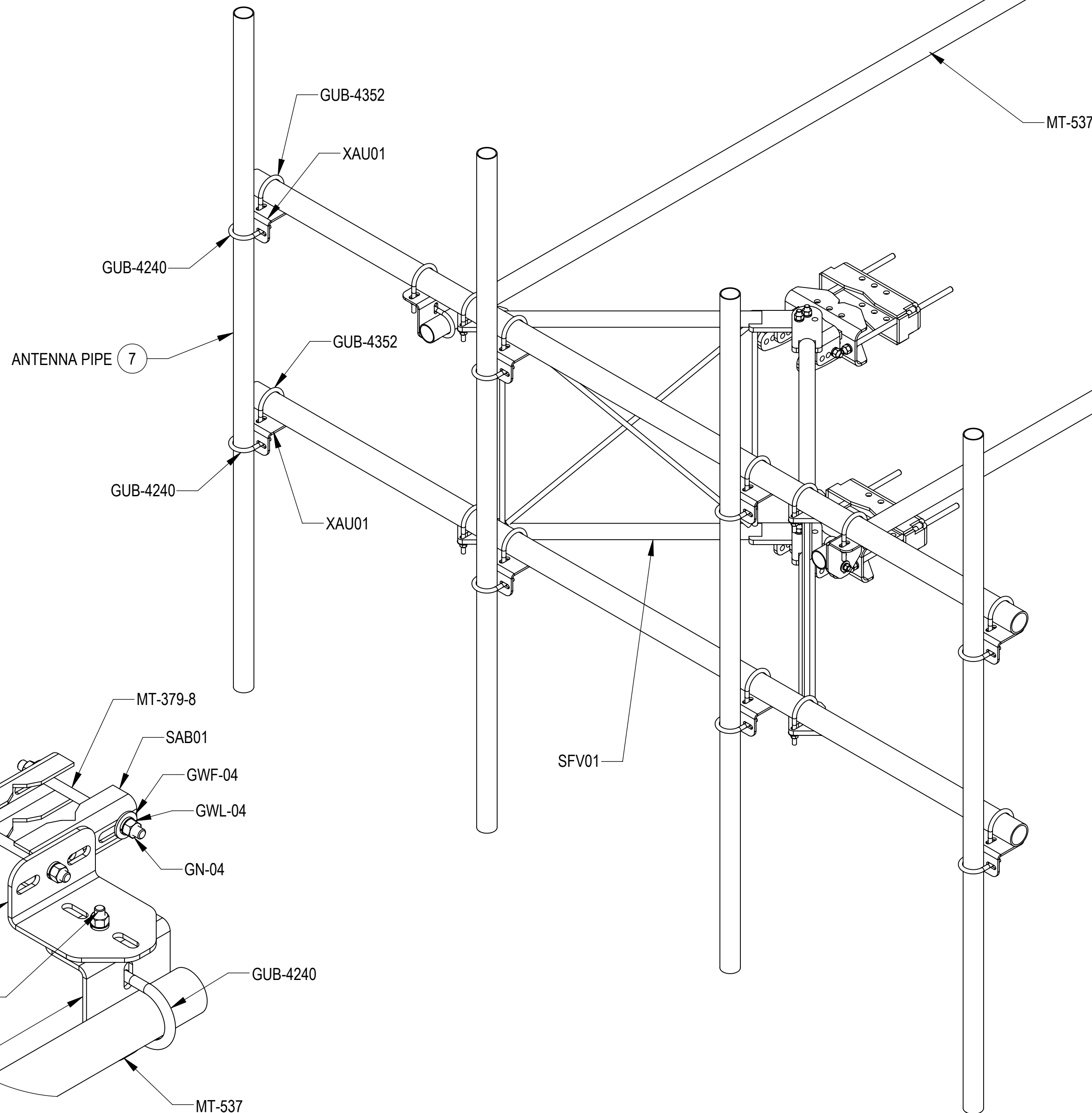
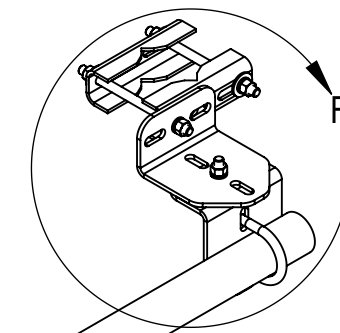
3

2

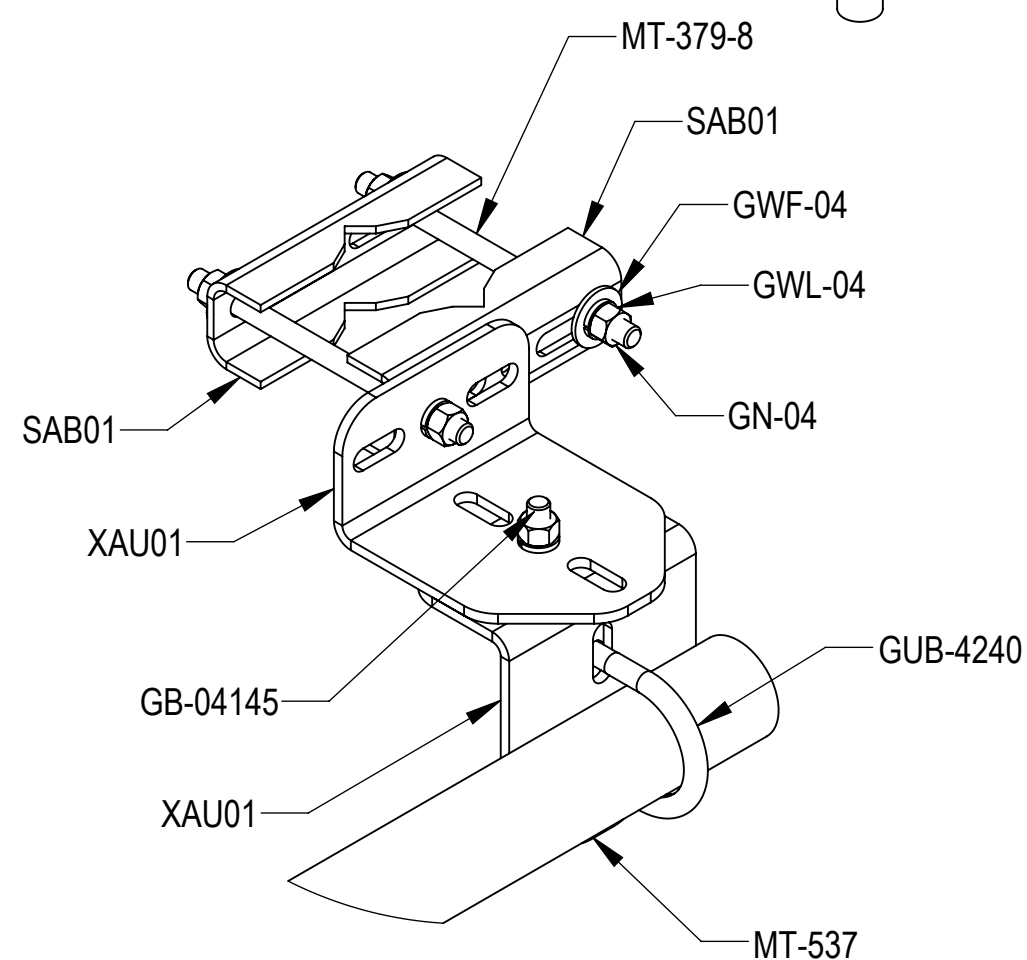
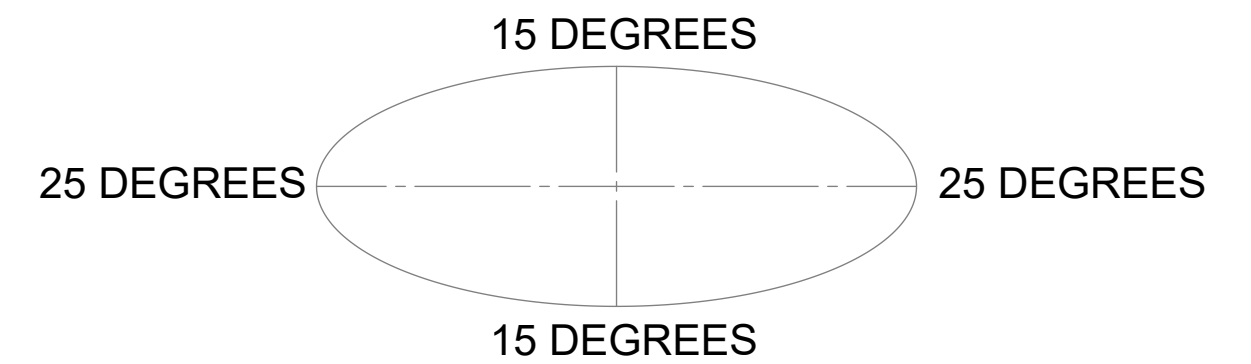
1

NOTES:

STEP 4: ATTACH ANTENNA PIPES AND TIE BACK PIPES (MT-537) TO FACE PIPES USING CROSSOVER BRACKETS (XAU01) AND U-BOLTS (GUB-4352 & GUB-4240). LOCATION SHOWN IS FOR MAXIMUM LOADING.



ALLOWABLE TIEBACK ANGLE
±15 DEGREES VERTICAL
±25 DEGREES HORIZONTAL



DETAIL F
SCALE 1 : 4

COMMSCOPE, INC. OF NORTH CAROLINA				
TITLE SFG2B SECTOR FRAME				
SIZE C	SCALE 1:10	DOCUMENT NO. SFG2B SERIES		
DRAWING		VERSION	STATUS	REVISION
DRAWING		02	RE	J
SHEET				7 OF 7

4

3

2

1