



## CMAX-EXT-43-i53

**Cell-Max™ Low PIM Directional Outdoor Antenna, 698–960 MHz and 1710–2700 MHz, 4.3-10**

### Electrical Specifications

Frequency Band, MHz	698–800	800–960	1710–2200	2200–2700
Gain, dBi	10.0	11.0	11.0	11.0
Beamwidth, Horizontal, degrees	68	60	60	52
Beamwidth, Vertical, degrees	30.0	28.0	30.0	30.0
Front-to-Back Ratio at 180°, dB	18	18	20	20
VSWR   Return Loss, dB	1.8   10.9	1.8   10.9	1.8   10.9	1.8   10.9
PIM, 3rd Order, 2 x 20 W, dBc	-153	-153	-153	-153
Input Power per Port, maximum, watts	100	100	100	100
Polarization	Vertical	Vertical	Vertical	Vertical
Impedance	50 ohm	50 ohm	50 ohm	50 ohm

### Product Classification

Brand	Cell-Max™
Product Type	Indoor/outdoor antenna

### General Specifications

Antenna Type	Directional
Application	Outdoor
Operating Frequency Band	1710 – 2700 MHz   698 – 960 MHz
Brand	Andrew®
Mount Type	Poles between 30–55 mm with supplied clamps
Number of Ports, all types	1
Package Quantity	1

### Mechanical Specifications

Color	White
Radome Material	PVC, UV resistant
RF Connector Interface	4.3-10 Female
Wind Loading, maximum	686.0 N @ 216 km/h 154.2 lbf @ 216 km/h
Wind Speed, maximum	216 km/h   134 mph

### Environmental Specifications

Ingress Protection Test Method	IEC 60529:2001, IP66
Operating Temperature	-40 °C to +60 °C (-40 °F to +140 °F)

CMAX-EXT-43-i53

Relative Humidity                      Up to 100%

## Dimensions

---

Depth	98.0 mm		3.9 in
Length	620.0 mm		24.4 in
Width	331.0 mm		13.0 in
Net Weight	4.7 kg		10.4 lb

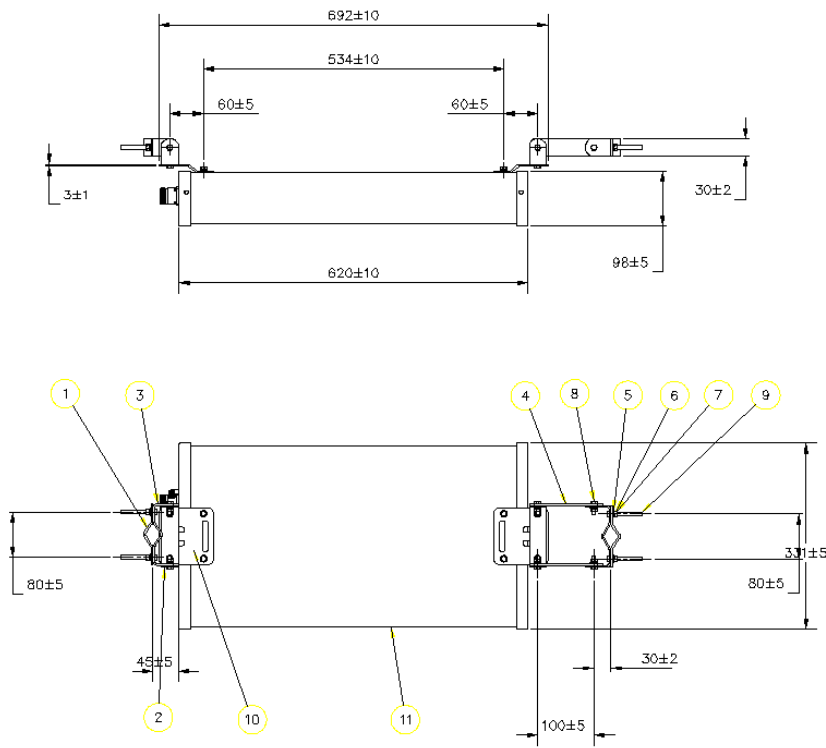
## Packed Dimensions

---

Depth	160.0 mm		6.3 in
Length	830.0 mm		32.7 in
Width	350.0 mm		13.8 in
Shipping Weight	7.4 kg		16.3 lb

CMAX-EXT-43-i53

## Outline Drawing



## Regulatory Compliance/Certifications

**Agency**

ISO 9001:2008

**Classification**

Designed, manufactured and/or distributed under this quality management system