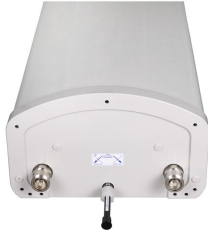


# LRX-8512DS-VTM



2-port sector antenna, 2x 698–960 MHz, 85° HPBW, RET compatible

- Broadband, providing future-ready single antenna for application in 700 MHz and existing 850 MHz cellular operation
- Ideal solution for dense urban, suburban site applications
- Excellent solution for site sharing and maximizing capacity

## General Specifications

<b>Antenna Type</b>	Sector
<b>Band</b>	Single band
<b>Color</b>	Light gray
<b>Grounding Type</b>	RF connector inner conductor and body grounded to reflector and mounting bracket
<b>Performance Note</b>	Outdoor usage   Wind loading figures are validated by wind tunnel measurements described in white paper WP-112534-EN
<b>Radome Material</b>	Fiberglass, UV resistant
<b>Radiator Material</b>	Aluminum
<b>RF Connector Interface</b>	7-16 DIN Female
<b>RF Connector Location</b>	Bottom
<b>RF Connector Quantity, low band</b>	2
<b>RF Connector Quantity, total</b>	2

## Dimensions

<b>Width</b>	301 mm   11.85 in
<b>Length</b>	1293 mm   50.906 in
<b>Depth</b>	181 mm   7.126 in

## Electrical Specifications

<b>Impedance</b>	50 ohm
<b>Operating Frequency Band</b>	698 – 960 MHz
<b>Polarization</b>	±45°

## Electrical Specifications

Frequency Band, MHz	698–806	806–896	870–960
---------------------	---------	---------	---------

# LRX-8512DS-VTM

<b>Gain, dBi</b>	13.5	13.9	14
<b>Beamwidth, Horizontal, degrees</b>	85	85	85
<b>Beamwidth, Vertical, degrees</b>	16.8	15.3	14.4
<b>Beam Tilt, degrees</b>	0–15	0–15	0–15
<b>USLS, typical, dB</b>	16	15	15
<b>Front-to-Back Ratio at 180°, dB</b>	26	25	24
<b>CPR at Boresight, dB</b>	20	27	24
<b>CPR at Sector, dB</b>	13	11	10
<b>Isolation, Cross Polarization, dB</b>	30	30	30
<b>VSWR   Return loss, dB</b>	1.4   15.6	1.4   15.6	1.5   14.0
<b>PIM, 3rd Order, 2 x 20 W, dBc</b>	-153	-153	-153
<b>Input Power per Port, maximum, watts</b>	400	400	400

## Mechanical Specifications

<b>Wind Loading at Velocity, frontal</b>	402.0 N @ 150 km/h   90.6 lbf @ 150 km/h
<b>Wind Loading at Velocity, lateral</b>	130.0 N @ 150 km/h   29.2 lbf @ 150 km/h
<b>Wind Speed, maximum</b>	241 km/h   149.75 mph

## Packaging and Weights

<b>Width, packed</b>	440 mm   17.323 in
<b>Depth, packed</b>	350 mm   13.78 in
<b>Length, packed</b>	1720 mm   67.717 in
<b>Net Weight, without mounting kit</b>	13.6 kg   29.983 lb
<b>Weight, gross</b>	25.8 kg   56.879 lb

## Regulatory Compliance/Certifications

<b>Agency</b>	<b>Classification</b>
CE	Compliant with the relevant CE product directives
CHINA-ROHS	Below maximum concentration value
ISO 9001:2015	Designed, manufactured and/or distributed under this quality management system
REACH-SVHC	Compliant as per SVHC revision on <a href="http://www.commscope.com/ProductCompliance">www.commscope.com/ProductCompliance</a>
ROHS	Compliant



# LRX-8512DS-VTM

---

## Included Products

$\frac{8}{3}$ SAMNT- — Wide Profile Antenna Downtilt Mounting Kit for 2.4 - 4.5 in (60 - 115 mm) OD round members. Kit contains one scissor top bracket set and one bottom bracket set.

## \* Footnotes

**Performance Note** Severe environmental conditions may degrade optimum performance