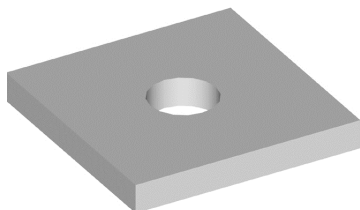


POWERED BY



BP-06

**Backing Plate, 6 in x 6 in x 1/4 in, 5/8 in hardware**

- This item is now available as a custom product and is made to order

## Dimensions

Height	25.4 mm   1.0 in
Length	152.4 mm   6.0 in
Weight	1.2 kg   2.6 lb
Width	152.4 mm   6.0 in

## General Specifications

Product Type	Backing plate
Material Type	Hot dip galvanized steel
Includes	Backing plate
Material Thickness	6.4 mm   1/4 in
Package Quantity	1