

H137MC102C102SG

90° H Plane Swept Bend for WR137, 5.85–8.2 GHz, with interface types CPR137G and CPR137G, 102 mm x 102 mm, gray

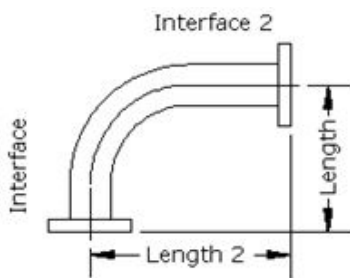
Electrical Specifications

Operating Frequency Band 5.85 – 8.2 GHz
 VSWR 1.05

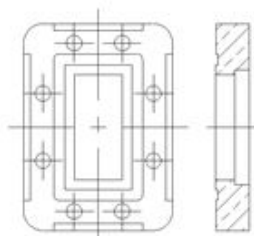
General Specifications

| | |
|----------------|------------------------|
| Component | 90° H Plane Swept Bend |
| Waveguide Size | WR137 WG14 R70 |
| Finish | Gray |
| Interface | CPR137G |
| Interface 2 | CPR137G |
| Length | 102 mm 4 in |
| Length 2 | 102 mm 4 in |

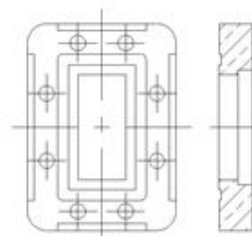
Component



Interface



Interface 2



Regulatory Compliance/Certifications

| | |
|---------------|--|
| Agency | Classification |
| ISO 9001:2008 | Designed, manufactured and/or distributed under this quality management system |