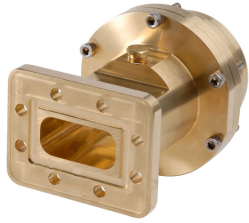


152SE



Fixed-tuned CPR159G for elliptical waveguide 52

Product Classification

Product Type Elliptical waveguide connector

General Specifications

Attachment Method Tab-flare | Tool-flare
Body Style Straight, fixed-tuned
Inner Contact Plating Unplated
Interface CPR159G
Outer Contact Plating Unplated
Pressurizable Yes

Dimensions

Width 96.52 mm | 3.8 in
Length 121.92 mm | 4.8 in
Transition Length 82.804 mm | 3.26 in
Waveguide Size WR159 | WG13 | R58

Electrical Specifications

Insertion Loss, typical 0.01 dB
Operating Frequency Band 5.6 – 6.425 GHz
Peak Power at Frequency, maximum 153.00 kW @ 6.00 GHz

Material Specifications

Material Type Brass

Environmental Specifications

152SE

Operating Temperature -55 °C to +85 °C (-67 °F to +185 °F)

Storage Temperature -55 °C to +85 °C (-67 °F to +185 °F)

Packaging and Weights

Weight, net 2 kg | 4.409 lb

Regulatory Compliance/Certifications

Agency

ISO 9001:2015

Classification

Designed, manufactured and/or distributed under this quality management system



* Footnotes

Insertion Loss, typical $0.05\sqrt{\text{freq}}$ (GHz) (not applicable for elliptical waveguide)