

APT-DFDF-DB



Arrestor Plus® Dual Band Quarterwave Surge Arrestor (T-shaped) with interface types DIN Female and DIN Female

Product Classification

Product Type	Surge arrestor
Product Brand	Arrestor Plus®
Ordering Note	CommScope® non-standard product

General Specifications

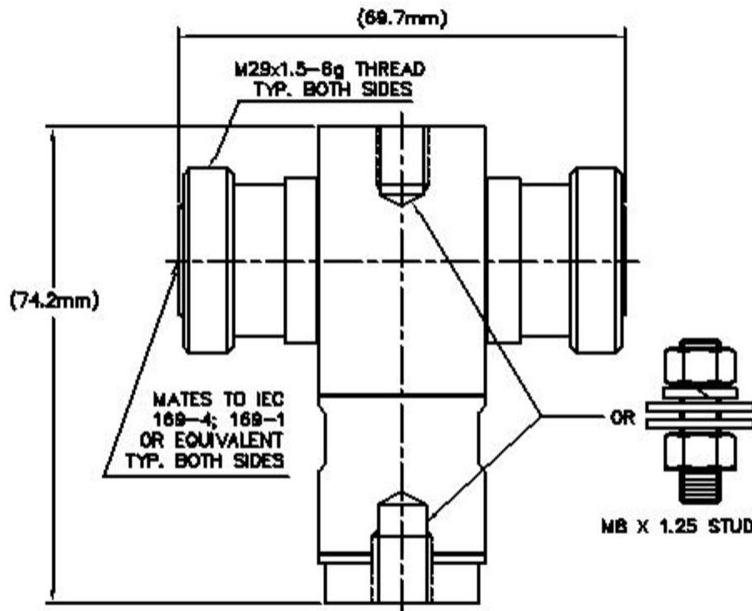
Device Type	dc Block
Inner Contact Plating	Silver
Interface	7-16 DIN Female
Interface 2	7-16 DIN Female
Outer Contact Plating	Trimetal
Pressurizable	No

Dimensions

Height	74.168 mm 2.92 in
Width	29.972 mm 1.18 in
Length	69.596 mm 2.74 in

Outline Drawing

APT-DFDF-DB



Electrical Specifications

3rd Order IMD	-117 dBm
3rd Order IMD Test Method	Two +43 dBm carriers
Insertion Loss, typical	0.07 dB
Average Power at Frequency	3,000.0 W @ 900 MHz
Connector Impedance	50 ohm
Lightning Surge Capability	100 times @ 20 kA
Lightning Surge Capability Test Method	IEEE C62.42-1991
Lightning Surge Capability Waveform	8/20 waveform
Lightning Surge Current	30 kA
Lightning Surge Current Waveform	8/20 waveform
Operating Frequency Band	1710 – 2000 MHz 2000 – 2170 MHz 824 – 960 MHz

APT-DFDF-DB

Peak Power, maximum	40 kW
Throughput Energy at Current	2.0 mJ @ 30 kA 25.0 µJ @ 2 kA
Throughput Energy Waveform	8/20 waveform

VSWR/Return Loss

Frequency Band	VSWR	Return Loss (dB)
824–960 MHz	1.14	24
1710–2000 MHz	1.11	26.4
2000–2170 MHz	1.14	24

Mechanical Specifications

Attachment Durability	25 cycles
Interface Durability	500 cycles
Interface Durability Method	IEC 61169-16:9.5
Mechanical Shock Test Method	MIL-STD-202F, Method 213B, Test Condition C

Environmental Specifications

Operating Temperature	-40 °C to +150 °C (-40 °F to +302 °F)
Storage Temperature	-40 °C to +100 °C (-40 °F to +212 °F)
Average Power, Ambient Temperature	40 °C 104 °F
Corrosion Test Method	MIL-STD-202, Method 101, Test Condition B
Immersion Depth	1 m
Immersion Test Mating	Mated
Immersion Test Method	IEC 60529:2001, IP68
Moisture Resistance Test Method	MIL-STD-202, Method 106
Thermal Shock Test Method	MIL-STD-202, Method 107, Test Condition A-1, Low Temperature -55 °C
Vibration Test Method	GR 2846-CORE
Water Jetting Test Mating	Mated

Packaging and Weights

Weight, net	0.431 kg 0.95 lb
--------------------	--------------------

Regulatory Compliance/Certifications

Agency	Classification
---------------	-----------------------

APT-DFDF-DB

CHINA-ROHS	Above maximum concentration value
ISO 9001:2015	Designed, manufactured and/or distributed under this quality management system
REACH-SVHC	Compliant as per SVHC revision on www.commscope.com/ProductCompliance
ROHS	Compliant/Exempted



* Footnotes

Immersion Depth	Immersion at specified depth for 24 hours
Insertion Loss, typical	$0.05\sqrt{\text{freq}}$ (GHz) (not applicable for elliptical waveguide)