

F137CCS3

FlexTwist™ Flexible Twist for WR137, 5.85–8.2 GHz, with interface types CPR137G and CPR137G, 900 mm

Electrical Specifications

Operating Frequency Band	5.85 – 8.2 GHz
Attenuation	0.09 db/ft 0.30 db/m
Average Power	2000 W
Peak Power	500.0 kW
VSWR	1.10

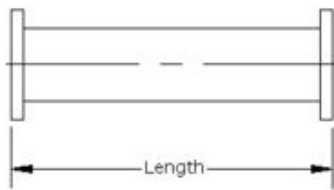
General Specifications

Component	Flexible Twist
Waveguide Size	WR137 WG14 R70
Interface	CPR137G
Interface 2	CPR137G
Length	900 mm 35 in

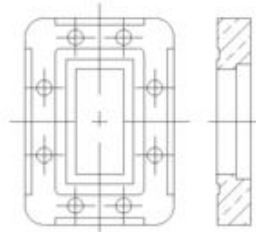
Mechanical Specifications

Maximum Twist	214.00 °/m 65.00 °/ft
Minimum Bend Radius, Multiple Bends (E Plane)	102.00 mm 4.00 in
Minimum Bend Radius, Multiple Bends (H Plane)	204.00 mm 8.00 in
Pressurization, maximum	30 psi 205 kPa

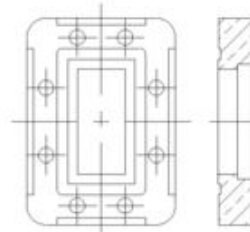
Component



Interface



Interface 2



Regulatory Compliance/Certifications

Agency

RoHS 2011/65/EU
China RoHS SJ/T 11364-2006
ISO 9001:2008

Classification

Compliant by Exemption
Above Maximum Concentration Value (MCV)
Designed, manufactured and/or distributed under this quality management system

Product Specifications

COMMSCOPE®

F137CCS3

