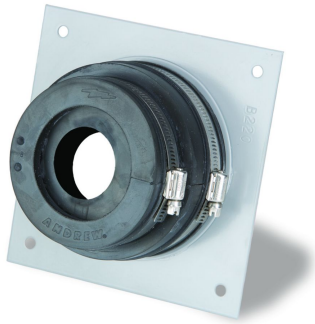


# SCE-12

---



Single Entrance Assembly for 1/2 in coaxial cable

## Product Classification

<b>Product Type</b>	Entrance panel
<b>Ordering Note</b>	CommScope® non-standard product

## General Specifications

<b>Color</b>	Gray
<b>Entry Panel Port Size</b>	101.6 mm   4 in
<b>Number of Ports</b>	1
<b>Panel Type</b>	Single

## Dimensions

<b>Height</b>	127 mm   5 in
<b>Width</b>	127 mm   5 in
<b>Nominal Size</b>	1/2 in

## Material Specifications

<b>Material Type</b>	Aluminum
----------------------	----------

## Environmental Specifications

<b>Weather Resistance Test Method</b>	04AS00-03.9.0   IEC 60529:2001, IP66
---------------------------------------	--------------------------------------

## Packaging and Weights

<b>Height, packed</b>	381 mm   15 in
<b>Width, packed</b>	76.2 mm   3 in
<b>Length, packed</b>	381 mm   15 in
<b>Included</b>	Boot   Entry cap   Hardware   Port

# SCE-12

---

**Packaging quantity** 1  
**Weight, gross** 1.1 kg | 2.425 lb

## Regulatory Compliance/Certifications

<b>Agency</b>	<b>Classification</b>
CHINA-ROHS	Below maximum concentration value
ISO 9001:2015	Designed, manufactured and/or distributed under this quality management system
REACH-SVHC	Compliant as per SVHC revision on <a href="http://www.commscope.com/ProductCompliance">www.commscope.com/ProductCompliance</a>
ROHS	Compliant

