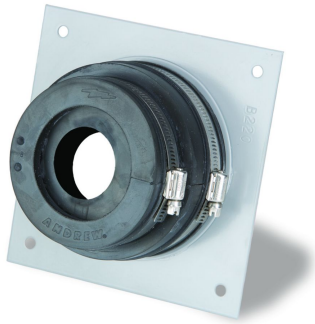


SCE-78



Single Entrance Assembly for 7/8 in coaxial cable

Product Classification

Product Type	Entrance panel
Ordering Note	CommScope® non-standard product

General Specifications

Color	Gray
Entry Panel Port Size	101.6 mm 4 in
Number of Ports	1
Panel Type	Single

Dimensions

Height	127 mm 5 in
Width	127 mm 5 in
Nominal Size	7/8 in

Material Specifications

Material Type	Aluminum
----------------------	----------

Environmental Specifications

Weather Resistance Test Method	04AS00-03.9.0 IEC 60529:2001, IP66
---------------------------------------	--------------------------------------

Packaging and Weights

Height, packed	381 mm 15 in
Width, packed	76.2 mm 3 in
Length, packed	381 mm 15 in
Included	Boot Entry cap Hardware Port

SCE-78

Packaging quantity 1
Weight, gross 0.99 kg | 2.183 lb

Regulatory Compliance/Certifications

Agency	Classification
CHINA-ROHS	Below maximum concentration value
ISO 9001:2015	Designed, manufactured and/or distributed under this quality management system
REACH-SVHC	Compliant as per SVHC revision on www.commscope.com/ProductCompliance
ROHS	Compliant

