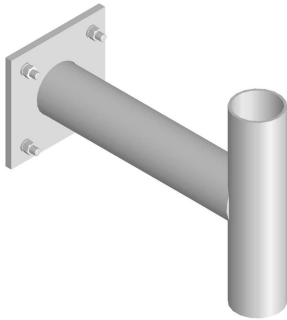


MT-197-24



Single Support Arm, 24 in, includes pipe

Product Classification

Product Type Support arms for ring mount

General Specifications

Mounting Ring mount

Pipe, quantity 1

Dimensions

Height 457.2 mm | 18 in

Width 254 mm | 10 in

Length 609.6 mm | 24 in

Pipe Length 457.2 mm | 18 in

Pipe Outer Diameter 114.3 mm | 4.5 in

Stand-off Distance 609.6 mm | 24 in

Material Specifications

Material Type Hot dip galvanized steel

Mechanical Specifications

Wind Rating 120 mph (BWS) at 150 ft AGL | 140 mph (3-second gust) at 150 ft AGL using Exposure D per FBC

Wind Rating Criteria Four 72 in x 8 in panel antennas per sector

Wind Rating Test Method TIA/EIA-222-G

Environmental Specifications

Man Rating 250 lb vertical man load at 15 mph (BWS)

MT-197-24

Packaging and Weights

Included	Hardware Stand-off arms
Packaging quantity	1
Weight, net	28.1 kg 61.95 lb

Regulatory Compliance/Certifications

Agency	Classification
ISO 9001:2015	Designed, manufactured and/or distributed under this quality management system



* Footnotes

Wind Rating	BWS—Base Wind Speed; FBC—Florida Building Code
Man Rating	BWS—Base Wind Speed