



SBNHH-1D65B

Multiband Antenna, 698–896 and 2x 1695–2360 MHz, 65° horizontal beamwidth, internal RET. Both high bands share the same electrical tilt.

- Interleaved dipole technology providing for attractive, low wind load mechanical package

Electrical Specifications

Frequency Band, MHz	698–806	806–896	1695–1880	1850–1990	1920–2200	2300–2360
Gain, dBi	14.9	14.7	17.7	18.2	18.6	18.6
Beamwidth, Horizontal, degrees	68	66	69	66	63	58
Beamwidth, Vertical, degrees	12.1	10.7	5.6	5.2	5.0	4.5
Beam Tilt, degrees	0–14	0–14	0–7	0–7	0–7	0–7
USLS (First Lobe), dB	14	13	15	15	15	13
Front-to-Back Ratio at 180°, dB	27	29	28	28	28	27
Isolation, dB	25	25	25	25	25	25
Isolation, Intersystem, dB	30	30	30	30	30	30
VSWR Return Loss, dB	1.5 14.0	1.5 14.0	1.5 14.0	1.5 14.0	1.5 14.0	1.5 14.0
PIM, 3rd Order, 2 x 20 W, dBc	-153	-153	-153	-153	-153	-153
Input Power per Port, maximum, watts	350	350	350	350	350	300
Polarization	±45°	±45°	±45°	±45°	±45°	±45°
Impedance	50 ohm	50 ohm	50 ohm	50 ohm	50 ohm	50 ohm

Electrical Specifications, BASTA*

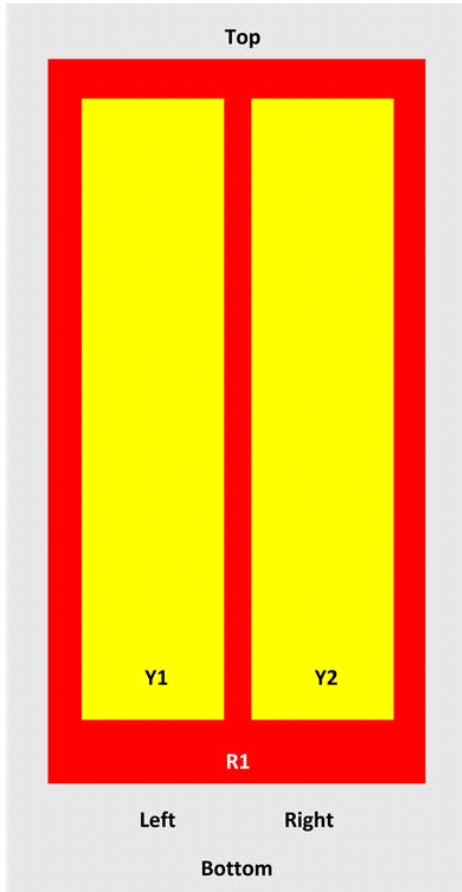
Frequency Band, MHz	698–806	806–896	1695–1880	1850–1990	1920–2200	2300–2360
Gain by all Beam Tilts, average, dBi	14.5	14.3	17.4	17.9	18.2	18.3
Gain by all Beam Tilts Tolerance, dB	±0.5	±0.8	±0.4	±0.3	±0.5	±0.3
Gain by Beam Tilt, average, dBi	0° 14.6	0° 14.5	0° 17.4	0° 17.8	0° 18.1	0° 18.2
Gain by Beam Tilt, average, dBi	7° 14.6	7° 14.4	3° 17.5	3° 17.9	3° 18.3	3° 18.4
Gain by Beam Tilt, average, dBi	14° 14.2	14° 13.6	7° 17.4	7° 17.9	7° 18.2	7° 18.4
Beamwidth, Horizontal Tolerance, degrees	±2.2	±3.4	±2	±4.6	±5.7	±4.3
Beamwidth, Vertical Tolerance, degrees	±0.8	±1	±0.3	±0.2	±0.3	±0.2
USLS, beampeak to 20° above beampeak, dB	16	14	16	16	16	15
Front-to-Back Total Power at 180° ± 30°, dB	25	26	27	26	26	26
CPR at Boresight, dB	22	23	21	20	20	22
CPR at Sector, dB	13	11	16	12	11	4

* CommScope® supports NGMN recommendations on Base Station Antenna Standards (BASTA). To learn more about the benefits of BASTA, [download the whitepaper Time to Raise the Bar on BSAs.](#)

Array Layout

SBNHH-1D65B

SBNHH 65



Array	Freq (MHz)	Conns	RET (MRET)	AISG RET UID
R1	698-896	1-2	1	ANXXXXXXXXXXXXXXXXX.1
Y1	1695-2360	3-4	2	ANXXXXXXXXXXXXXXXXX.2
Y2	1695-2360	5-6		

View from the front of the antenna

(Sizes of colored boxes are not true depictions of array sizes)

General Specifications

Operating Frequency Band	1695 – 2360 MHz 698 – 896 MHz
Antenna Type	Sector
Band	Multiband
Performance Note	Outdoor usage

Mechanical Specifications

RF Connector Quantity, total	6
RF Connector Quantity, low band	2
RF Connector Quantity, high band	4
RF Connector Interface	7-16 DIN Female

SBNHH-1D65B

Color	Light gray
Grounding Type	RF connector inner conductor and body grounded to reflector and mounting bracket
Radiator Material	Aluminum Low loss circuit board
Radome Material	Fiberglass, UV resistant
Reflector Material	Aluminum
RF Connector Location	Bottom
Wind Loading, frontal	618.0 N @ 150 km/h 138.9 lbf @ 150 km/h
Wind Loading, lateral	197.0 N @ 150 km/h 44.3 lbf @ 150 km/h
Wind Loading, rear	728.0 N @ 150 km/h 163.7 lbf @ 150 km/h
Wind Speed, maximum	241 km/h 150 mph

Dimensions

Length	1851.0 mm 72.9 in
Width	301.0 mm 11.9 in
Depth	180.0 mm 7.1 in
Net Weight, without mounting kit	18.4 kg 40.6 lb

Remote Electrical Tilt (RET) Information

Input Voltage	10–30 Vdc
Internal RET	High band (1) Low band (1)
Power Consumption, idle state, maximum	2.0 W
Power Consumption, normal conditions, maximum	13.0 W
Protocol	3GPP/AISG 2.0 (Multi-RET)
RET Interface	8-pin DIN Female 8-pin DIN Male
RET Interface, quantity	1 female 1 male

Packed Dimensions

Length	2025.0 mm 79.7 in
Width	390.0 mm 15.4 in
Depth	296.0 mm 11.7 in
Shipping Weight	31.0 kg 68.3 lb

Regulatory Compliance/Certifications

Agency

RoHS 2011/65/EU
China RoHS SJ/T 11364-2006
ISO 9001:2008

Classification

Compliant by Exemption
Above Maximum Concentration Value (MCV)
Designed, manufactured and/or distributed under this quality management system



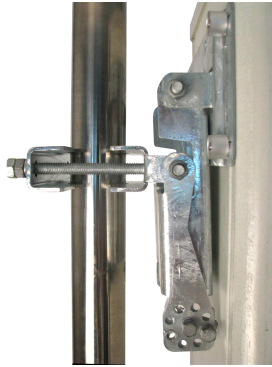
SBNHH-1D65B

Included Products

BSAMNT-1 — Wide Profile Antenna Downtilt Mounting Kit for 2.4 - 4.5 in (60 - 115 mm) OD round members. Kit contains one scissor top bracket set and one bottom bracket set.

* Footnotes

Performance Note Severe environmental conditions may degrade optimum performance



BSAMNT-1

Wide Profile Antenna Downtilt Mounting Kit for 2.4 - 4.5 in (60 - 115 mm) OD round members. Kit contains one scissor top bracket set and one bottom bracket set.

General Specifications

Mount Type	Downtilt mounts
Application	Outdoor
Includes	Brackets Hardware
Package Quantity	1

Mechanical Specifications

Color	Silver
Material Type	Galvanized steel

Dimensions

Compatible Diameter, maximum	115.0 mm 4.5 in
Compatible Diameter, minimum	60.0 mm 2.4 in
Net Weight	6.0 kg 13.3 lb

Regulatory Compliance/Certifications

Agency	Classification
RoHS 2011/65/EU	Compliant by Exemption
China RoHS SJ/T 11364-2006	Above Maximum Concentration Value (MCV)
ISO 9001:2008	Designed, manufactured and/or distributed under this quality management system

