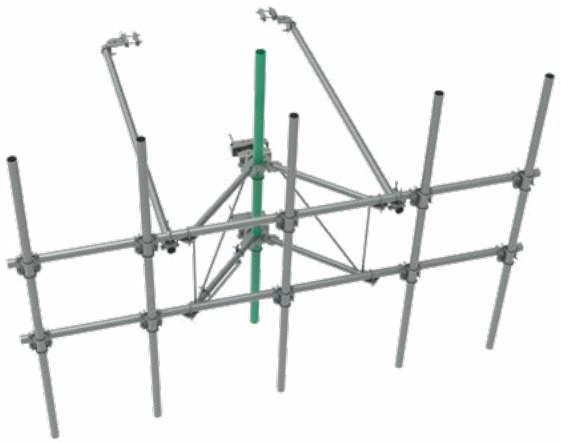
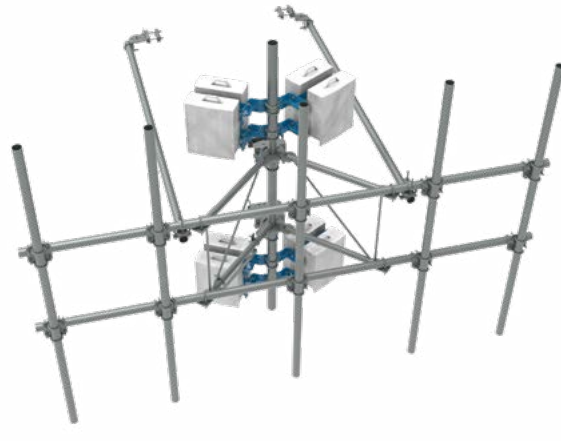
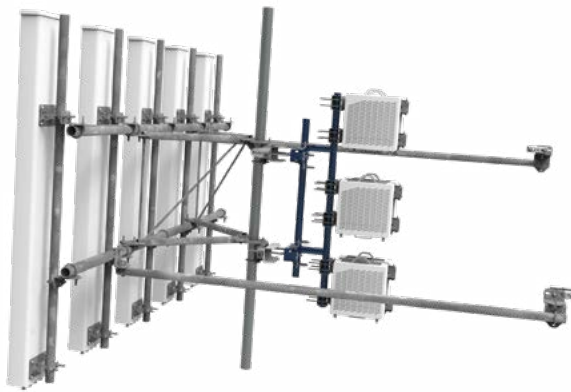


Smarter engineering for PIM-free tower tops

Passive intermodulation (PIM) presents a constant challenge to cellular network performance. CommScope created a new sector frame solution that greatly reduces PIM arising between remote radio units (RRUs) and base station antennas (BSAs) on the tower—and the resulting PIM savings are a real game-changer, especially for higher-power radios.

RHDX SPINE Extension	APEX RRU Mount	CORE RRU Saddle Mount
		
Features		
<ul style="list-style-type: none"> • Extended spine for SFG23 RHDX mounts that decrease PIM from radio relocation • Increased versatility and stability • Updated frame provides higher loading • More RRU mounting available, reducing need for additional mounts • Better load management • Less structure stress 	<ul style="list-style-type: none"> • Angled RRU brackets for stronger, more versatile mounting • Decreased PIM from radio relocation (pulls radio from near field) • Increased equipment and mount stability (reduces potential for vibration induced PIM) • Decreased antenna pipe loading • Compatible with towers and monopoles • Single radio location for faster assembly • Increased radio capacity 	<ul style="list-style-type: none"> • Internal tower RRU mount • Decreased PIM from radio relocation • Increased mount stability • Decreased face loading • Increased mount versatility without the need for a new RRU mount
Notes		
<ul style="list-style-type: none"> • Available as tower & monopole sector frames • Can be used in combination with APEX RRU mounts 	<ul style="list-style-type: none"> • Available for mods and NSBs • Can be used in combination with APEX RRU mounts 	<ul style="list-style-type: none"> • Standard on all new SFG22/23 sector frames • Requires use of standoff – P series or HS series • Requires use of RR-FA2 RRU brackets

Ordering Information

G23RHDX SPINE Extension

SFG23RHDX

Part Number	Description
SFG23RHDX-10-4-H10	XSECTOR Frame 10' Face, (4) 126" Antenna
SFG23RHDX10-5-WLL	XSECTOR Frame 10' Face, (5) 126" Antenna
SFG23RHDX12-4-H10	XSECTOR Frame 12'6" Face, (4) 126" Antenna
SFG23RHDX12-5-WLL	XSECTOR Frame 12'6" Face, (5) 126" Antenna
SFG23RHDX14-4-H10	XSECTOR Frame 14'6" Face, (4) 126" Antenna
SFG23RHDX14-5-WLL	XSECTOR Frame 14'6" Face, (5) 126" Antenna

MCG23RHDX

Part Number	Description
MCG23RHDX12-12-H10	Triple Sector Frame Mono 12'6" FACE, (4) 126" ANT
MCG23RHDX12-15-WLL	Triple Sector Frame Mono 12'6" FACE, (5) 126" ANT
MCG23RHDX14-12-H10	Triple Sector Frame Mono 14'6" FACE, (4) 126" ANT
MCG23RHDX14-15-WLL	Triple Sector Frame Mono 14'6" FACE, (5) 126" ANT

RRU Mounts

APEX

Part Number	Description
RR-APEX4	APEX 4 RRU Mounting

CORE

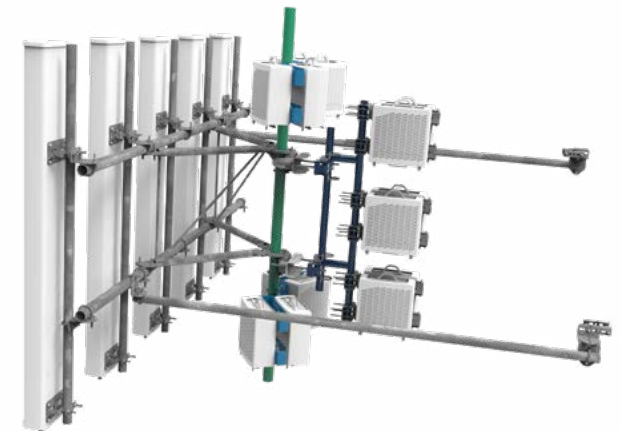
Part Number	Description
MTC4112	CORE RRU MOUNTING BRACKET 1' STAND-OFF
MTC4113	CORE RRU MOUNTING BRACKET 2' STAND-OFF

FAST ACCESS

Part Number	Description
RR-FA2	FAST ACCESS RRU MOUNTING BRACKET
RR-B2B-AR	BACK-TO-BACK RRU MOUNTING BRACKET

G22HDX Mounts

Part Number	Description
SFG22HDX12-4-H10	Sector Frame, SFG22HDX, H10, 2-7/8" x 12'6" ft face, (4) 2-7/8" x 120" Antenna Pipes, 1 Sector
SFG22HDX14-4-H10	Sector Frame, SFG22HDX, H10, 2-7/8" x 14'6" ft face, (4) 2-7/8" x 120" Antenna Pipes, 1 Sector
SFG22HDX12-5-WLL	Sector Frame, SFG22HDX, WLL, 2-7/8" x 12'6" ft face, (5) 2-7/8" x 120" Antenna Pipes, 1 Sector
SFG22HDX14-5-WLL	Sector Frame, SFG22HDX, WLL, 2-7/8" x 14'6" ft face, (5) 2-7/8" x 120" Antenna Pipes, 1 Sector
MCG22HDX12-12-H10	Monopole Sector Frame, SFG22HDX, H10, 2-7/8" x 12'6" ft face, (12) 2-7/8" x 120" Antenna Pipes, 3 Sector
MCG22HDX14-12-H10	Monopole Sector Frame, SFG22HDX, H10, 2-7/8" x 14'6" ft face, (12) 2-7/8" x 120" Antenna Pipes, 3 Sector
MCG22HDX12-15-WLL	Monopole Sector Frame, SFG22HDX, WLL, 2-7/8" x 12'6" ft face, (15) 2-7/8" x 120" Antenna Pipes, 3 Sector
MCG22HDX14-15-WLL	Monopole Sector Frame, SFG22HDX, WLL, 2-7/8" x 14'6" ft face, (15) 2-7/8" x 120" Antenna Pipes, 3 Sector



commscope.com

Visit our website or contact your local CommScope representative for more information.

© 2021 CommScope, Inc. All rights reserved.

Unless otherwise noted, all trademarks identified by ® or ™ are registered trademarks, respectively, of CommScope, Inc. This document is for planning purposes only and is not intended to modify or supplement any specifications or warranties relating to CommScope products or services. CommScope is committed to the highest standards of business integrity and environmental sustainability with a number of CommScope's facilities across the globe certified in accordance with international standards, including ISO 9001, TL 9000, and ISO 14001. Further information regarding CommScope's commitment can be found at www.commscope.com/About-Us/Corporate-Responsibility-and-Sustainability.

CO-115423-EN (02/21)