

4

3

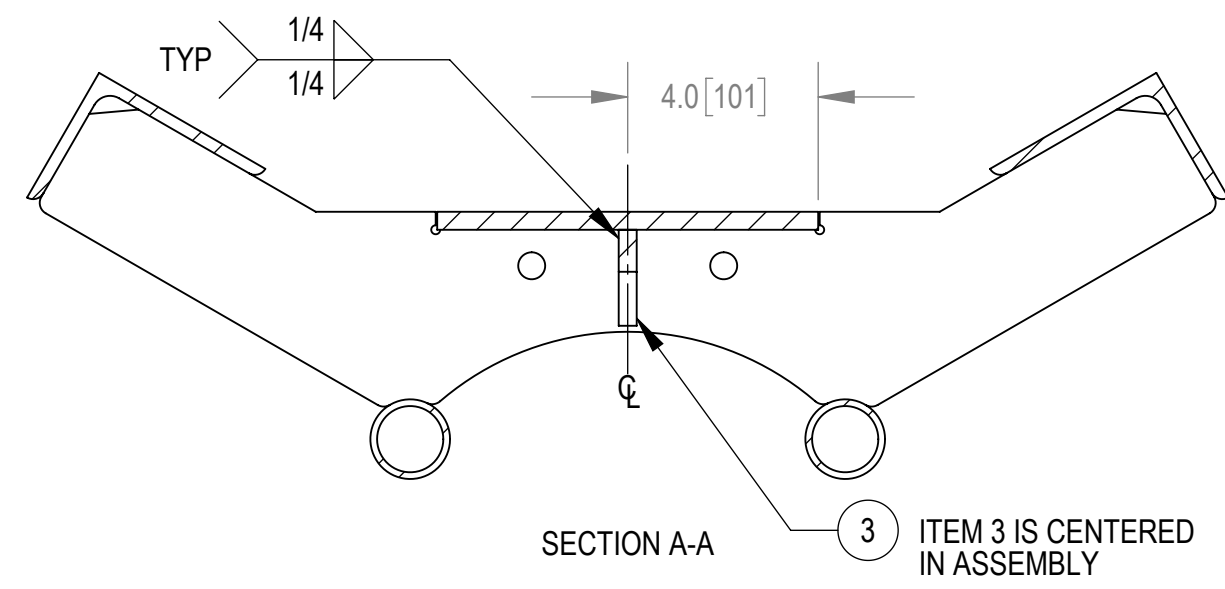
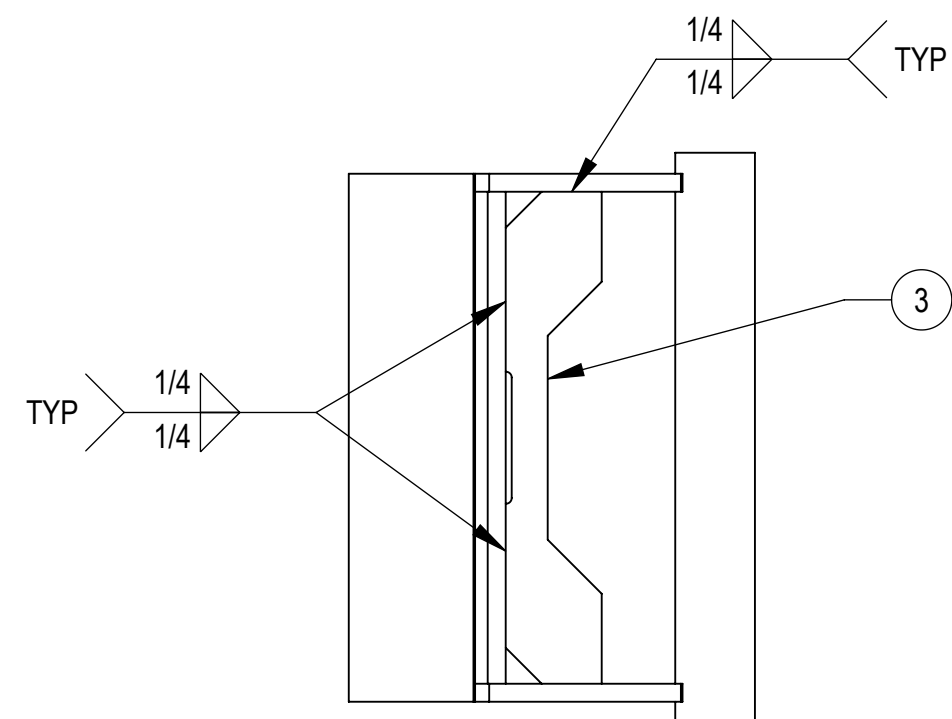
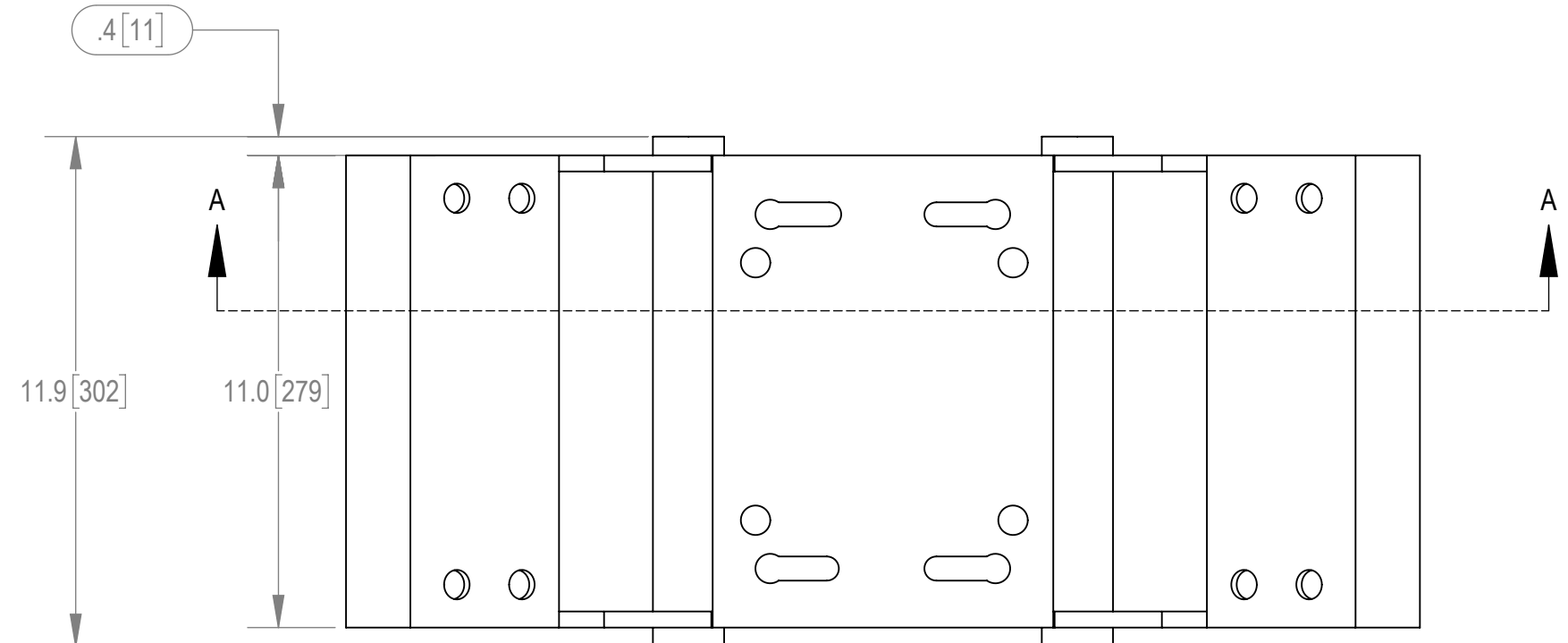
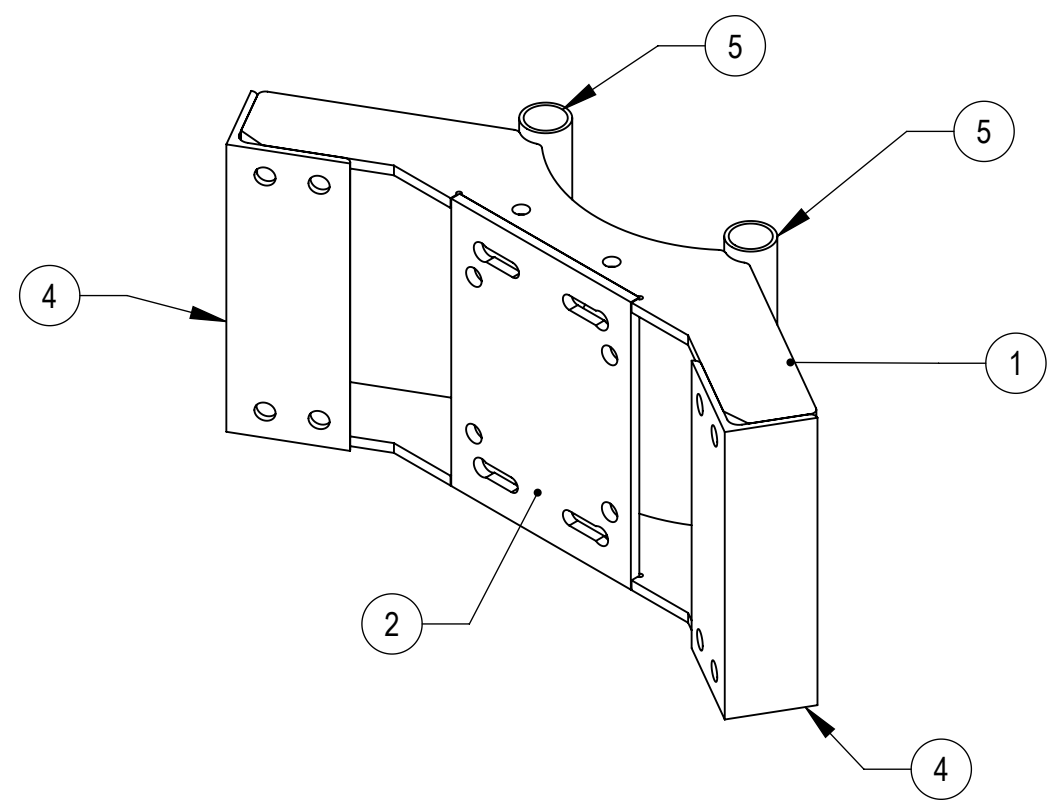
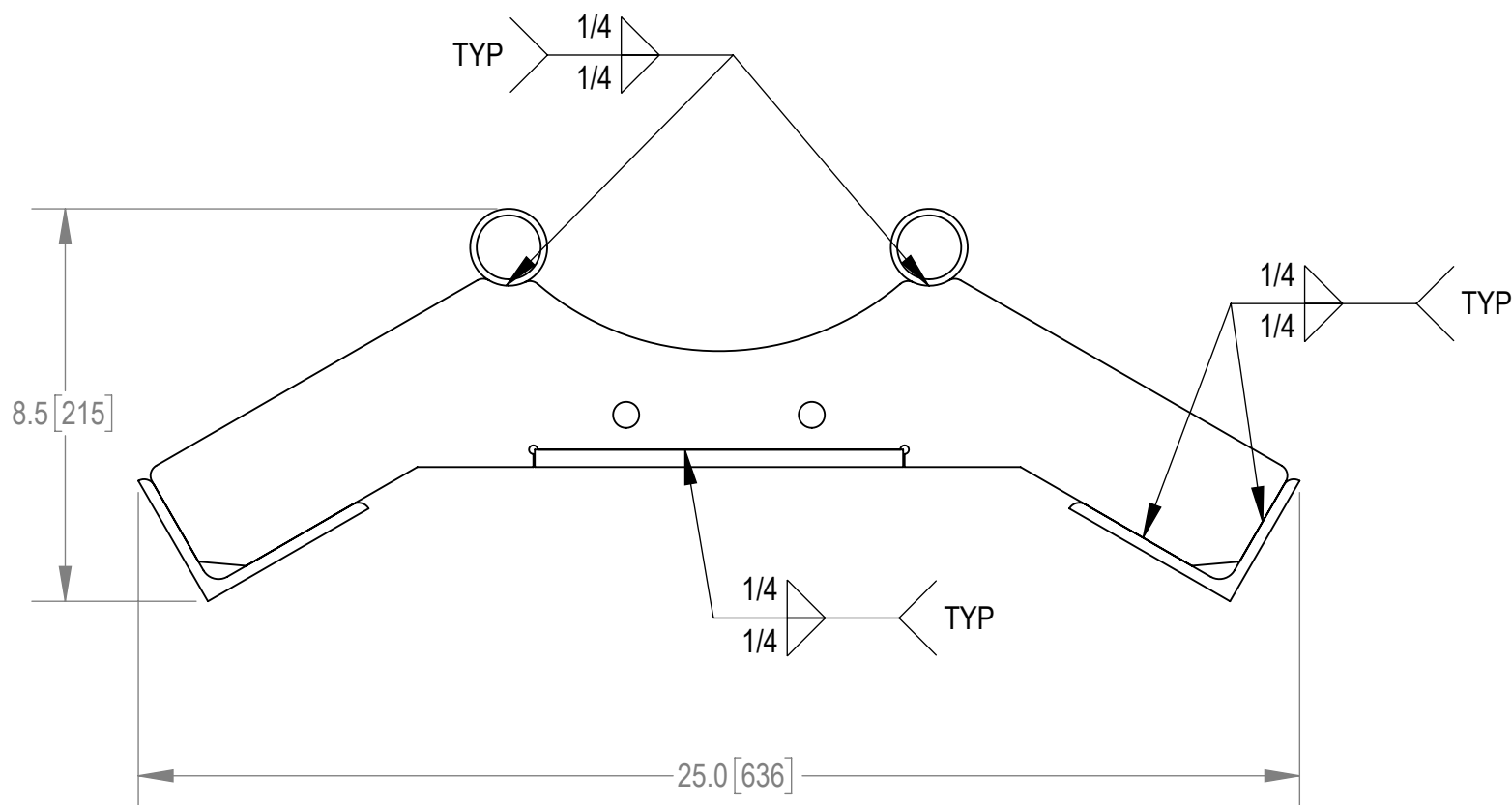
2

1

NOTES:

- 1.0 GENERAL
 - 1.1 ALL METRIC DIMENSIONS ARE IN BRACKETS
 - 1.2 MARK PART WITH IDENTIFICATION NUMBER
- 2.0 DESIGN NOTES
 - 2.1 DESIGNED PER CUSTOMER REQUIREMENTS
- 3.0 MANUFACTURING/SPECIAL REQUIREMENTS
 - 3.1 WELDING WORKMANSHIP PER AWS D1.1, TABLE 6.1
- 4.0 TEST
- 5.0 PACKAGING

REVISIONS				
REV.	ECN	DESCRIPTION	BY	DATE
A	8000040261	INITIAL RELEASE	MRC	05/28/20



COMMSCOPE, INC. OF NORTH CAROLINA								
TOLERANCES			SAP MATERIAL MASTER					
1 PLACE .X ± .25	3 PLACE .XXX ± 0.06		MTC4104-0100					
2 PLACE .XX ± 0.12	ANGLES ± 2°							
FINISH GALV A123			MATERIAL A1011/A1018, A500, A529					
UNLESS OTHERWISE SPECIFIED DIMENSIONS ARE IN INCHES INTERPRET PER ANSI Y 14.5M-1994	CE	MRC	DATE	05/28/20	WELDMT, RINGMOUNT 12"-45"			
	RW	MC1107	DATE	07/23/2020				
	RV	BCAMPBELLCON	DATE	07/29/2020				
	AD	BCROSS	DATE	07/30/2020				
	RE	ECN 008000040261						
SCALE		DOCUMENT NO.		MTC4104-0100				
1:4								
SIZE	WORK AREA	MODEL		DRAWING				
C	24	VERSION	STATUS	REVISION	VERSION	STATUS	REVISION	SHEET
		01	RE	A	01	RE		1 OF 1

ITEM NO.	PART NUMBER	DESCRIPTION	QTY.
1	MTC4104-0021	WING PLATE	2
2	MTC4104-0022	BACKING PLATE	1
3	MTC4104-0023	GUSSET	1
4	MTC4104-0024	ANGLE, 4 X 3 X .25	2
5	MTC4104-0025	PIPE 1.66 O.D SCHD 40	2

DENSITY		lbs/in ³
MASS	31.52	lbs
VOLUME	142.30	in ³
SURFACE AREA	1093.26	in ²
HEIGHT	11.9	
LENGTH	25.0	
WIDTH	8.5	

4

3

2

1

4

3

2

1

NOTES:

- 1.0 GENERAL
- 1.1 ALL METRIC DIMENSIONS ARE IN BRACKETS
- 2.0 DESIGN NOTES
- 2.1 DESIGNED PER CUSTOMER REQUIREMENTS
- 3.0 MANUFACTURING/SPECIAL REQUIREMENTS
- 4.0 TEST
- 5.0 PACKAGING

REVISIONS				
REV.	ECN	DESCRIPTION	BY	DATE
A	8000040261	INITIAL RELEASE	MRC	05/27/20

D

D

C

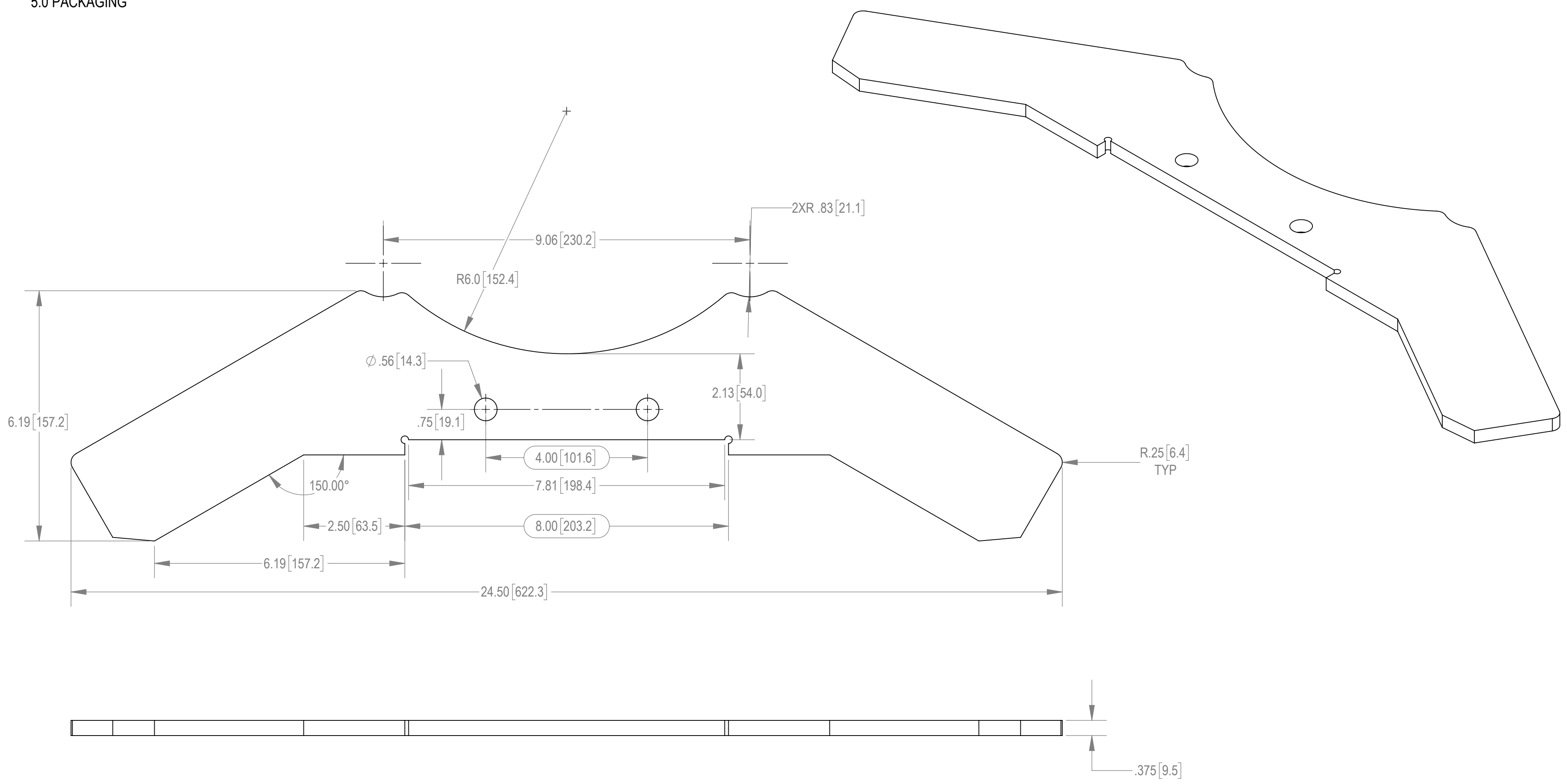
C


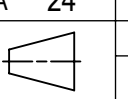
B

B

A

A



COMMSCOPE, INC. OF NORTH CAROLINA										
TOLERANCES					SAP MATERIAL MASTER					
0 PLACE X ± .25		2 PLACE .XX ± 0.06			MTC4104-0021					
1 PLACE .X ± 0.12		ANGLES ± 2°								
FINISH NONE					MATERIAL 3/8" THICK STEEL A1011/A1018					
UNLESS OTHERWISE SPECIFIED DIMENSIONS ARE IN INCHES INTERPRET PER ANSI Y 14.5M-1994	CE	MRC	05/27/20	WING PLATE						
	RW	MC1107	05/28/2020							
	RV									
	AD	BCAMPBELLCON	07/29/2020							
	RE	BCROSS	07/30/2020							
ECN 008000040261				SCALE	DOCUMENT NO.					
				1:2	MTC4104-0021					
SIZE	WORK AREA	24	MODEL			DRAWING				SHEET 1 OF 1
C	 	VERSION	STATUS	REVISION	VERSION	STATUS	REVISION			
		00	RE		00	RE				

DENSITY	0.28	lbs/in ³
MASS	7.66	lbs
VOLUME	27.17	in ³
SURFACE AREA	167.54	in ²
HEIGHT	.375"	
LENGTH	24.50"	
WIDTH	6.19"	

4

3

2

1

4

3

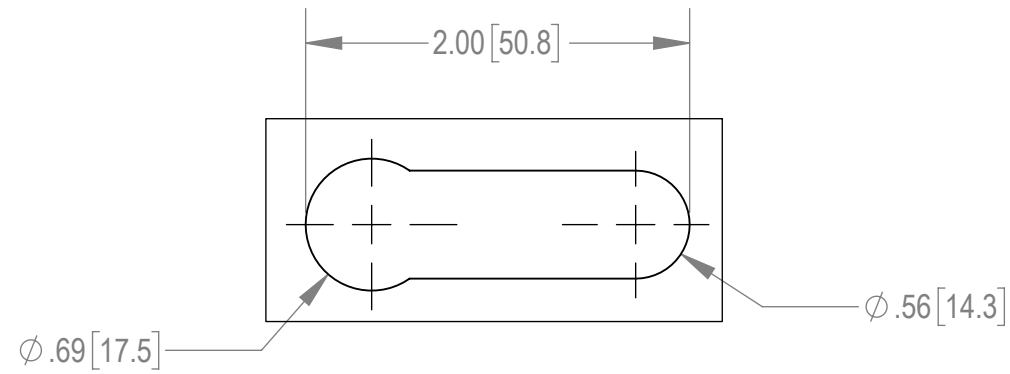
2

1

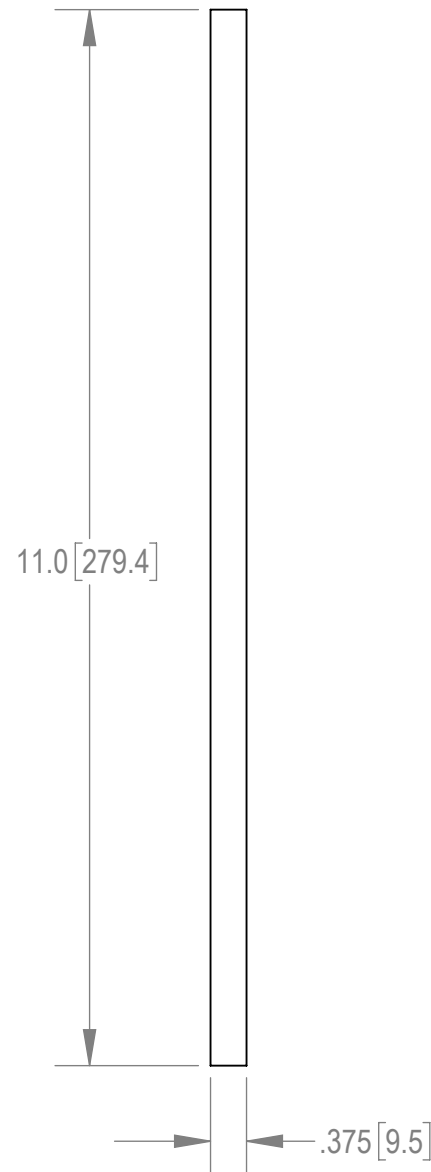
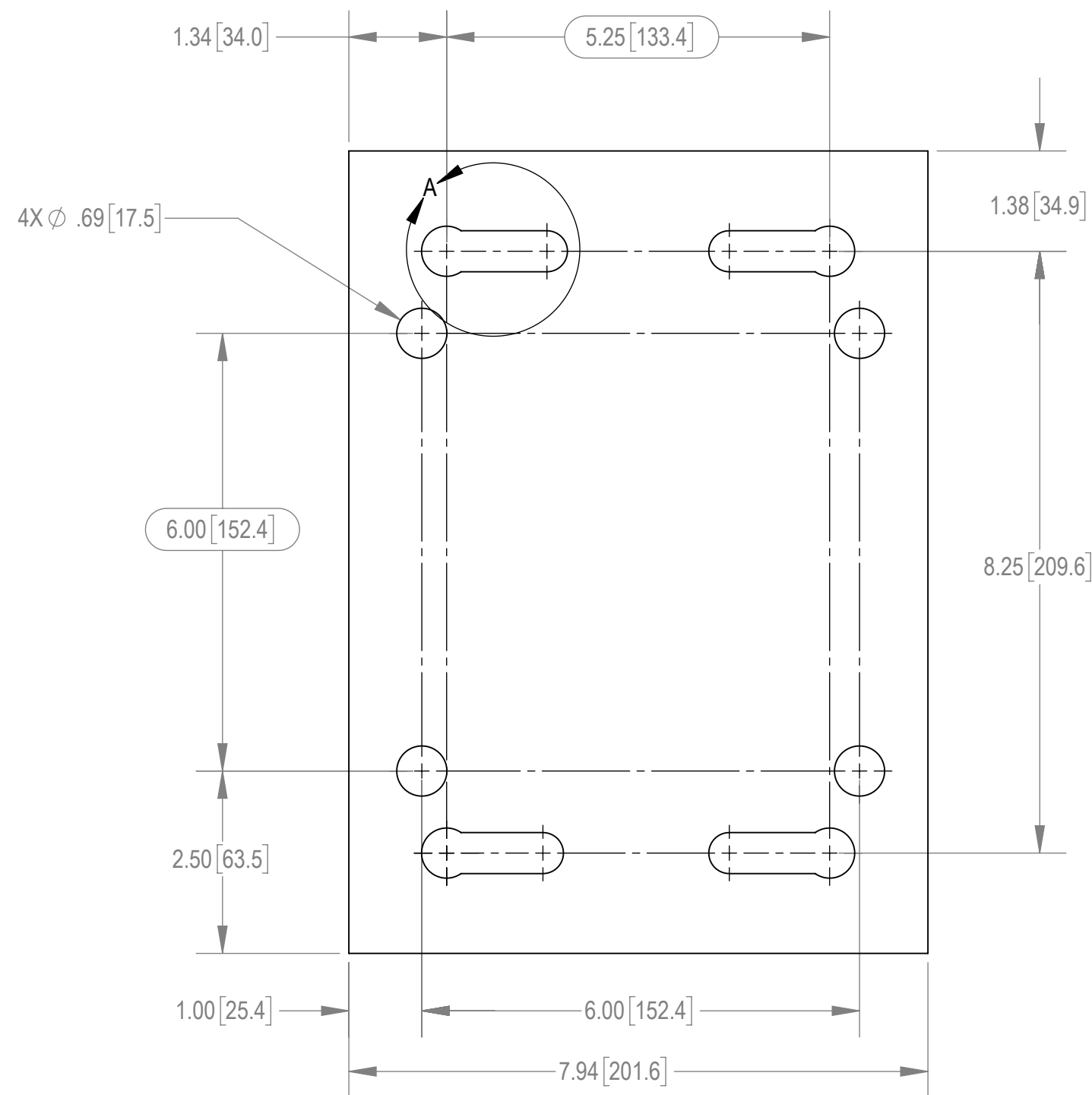
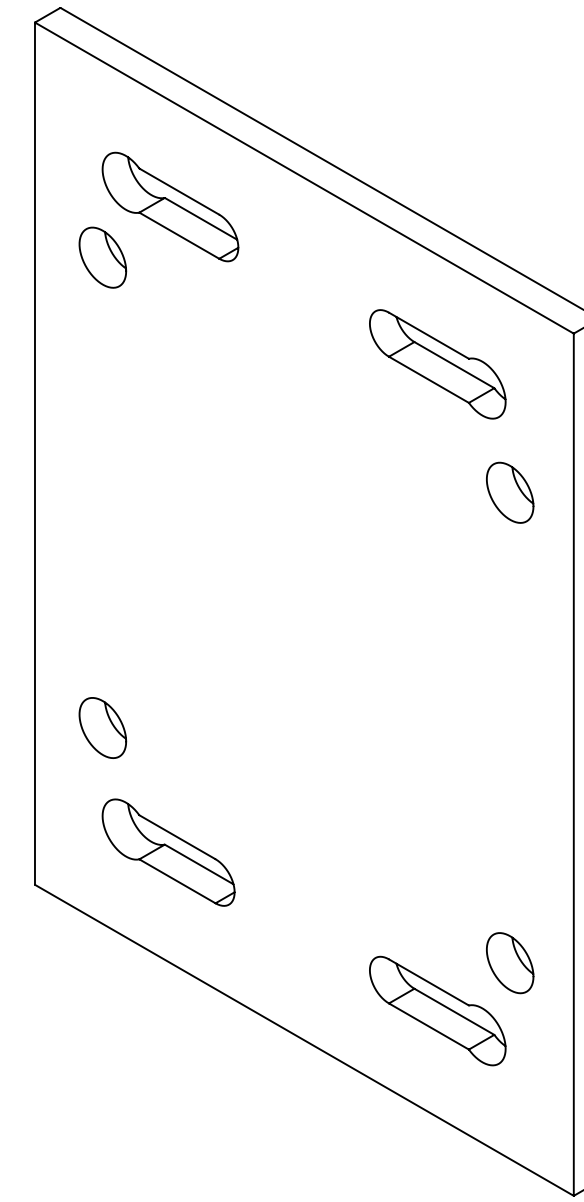
NOTES:

- 1.0 GENERAL
- 1.1 ALL METRIC DIMENSIONS ARE IN BRACKETS
- 2.0 DESIGN NOTES
- 2.1 DESIGNED PER CUSTOMER REQUIREMENTS
- 3.0 MANUFACTURING/SPECIAL REQUIREMENTS
- 4.0 TEST
- 5.0 PACKAGING

REVISIONS				
REV.	ECN	DESCRIPTION	BY	DATE
A	8000040261	INITIAL RELEASE	MRC	07/23/20



DETAIL A
SCALE 1:1



COMMSCOPE, INC. OF NORTH CAROLINA										
TOLERANCES					SAP MATERIAL MASTER					
0 PLACE X ± .25		2 PLACE .XX ± 0.06			MTC4104-0022					
1 PLACE .X ± 0.12		ANGLES ± 2°								
FINISH NONE					MATERIAL .375" THICK STEEL A1011/1018 GR 36					
UNLESS OTHERWISE SPECIFIED DIMENSIONS ARE IN INCHES INTERPRET PER ANSI Y 14.5M-1994	CE	MRC	05/28/20	BACKING PLATE						
	RW	MC1107	07/23/2020							
	RV									
	AD	BCAMPBELLCON	07/29/2020							
	RE	BCROSS	07/30/2020							
ECN 008000040261			SCALE	DOCUMENT NO.						
			1:2	MTC4104-0022						
SIZE		WORK AREA 24		MODEL			DRAWING			SHEET 1 OF 1
C			VERSION	STATUS	REVISION	VERSION	STATUS	REVISION		
			02	RE		03	RE			

DENSITY	0.00	lbs/in ³
MASS	0.03	lbs
VOLUME	30.55	in ³
SURFACE AREA	187.41	in ²
HEIGHT	11.0	
LENGTH	7.94	
WIDTH	.375	

4

3

2

1

4

3

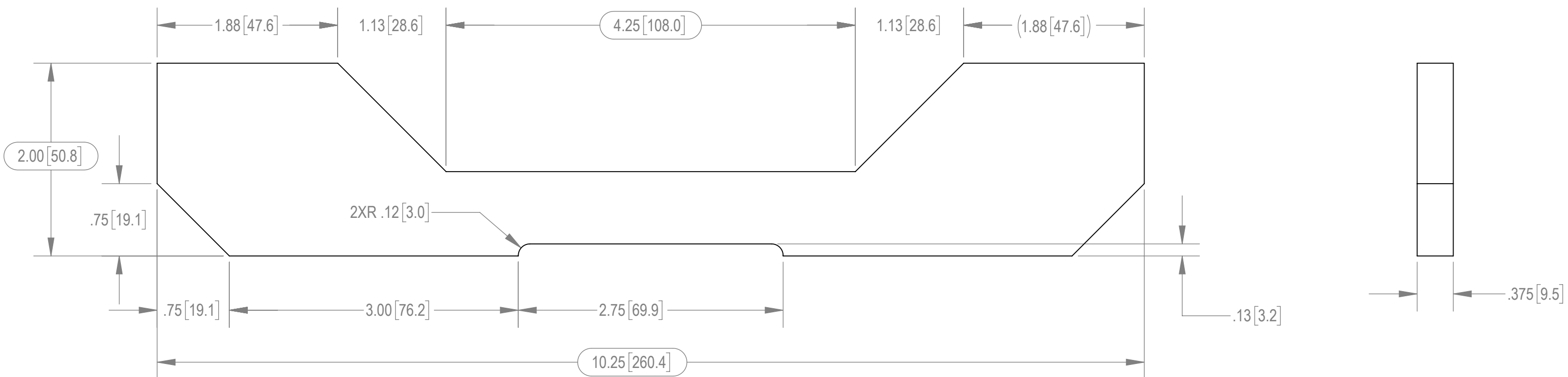
2

1

NOTES:

- 1.0 GENERAL
- 1.1 ALL METRIC DIMENSIONS ARE IN BRACKETS
- 2.0 DESIGN NOTES
- 2.1 DESIGNED PER CUSTOMER REQUIREMENTS
- 3.0 MANUFACTURING/SPECIAL REQUIREMENTS
- 4.0 TEST
- 5.0 PACKAGING

REVISIONS				
REV.	ECN	DESCRIPTION	BY	DATE
A	8000040261	INITIAL RELEASE	MRC	05/28/20



COMMSCOPE, INC. OF NORTH CAROLINA

TOLERANCES		SAP MATERIAL MASTER	
0 PLACE X ± .25	2 PLACE .XX ± 0.06	MTC4104-0022	
1 PLACE .X ± 0.12	ANGLES ± 2°		
FINISH NONE		MATERIAL .375" THICK STEEL A1011/A1018 GR 36	
UNLESS OTHERWISE SPECIFIED DIMENSIONS ARE IN INCHES INTERPRET PER ANSI Y 14.5M-1994	CE	MRC	05/28/20
	RW	MCT1107	05/28/2020
	RV		
	AD	BCAMPBELLCON	07/29/2020
	RE	BCROSS	07/30/2020
ECN 008000040261		GUSSET	
SCALE 1:1		DOCUMENT NO. MTC4104-0023	
SIZE	WORK AREA 24	MODEL	
C		VERSION	STATUS
		00	RE
		DRAWING	
VERSION	STATUS	REVISION	REVISION
00	RE	00	RE
			SHEET
			1 OF 1

DENSITY	0.00	lbs/in ³
MASS	0.01	lbs
VOLUME	5.08	in ³
SURFACE AREA	36.37	in ²
HEIGHT	2.0	
LENGTH	10.25	
WIDTH	.375	

4

3

2

1

4

3

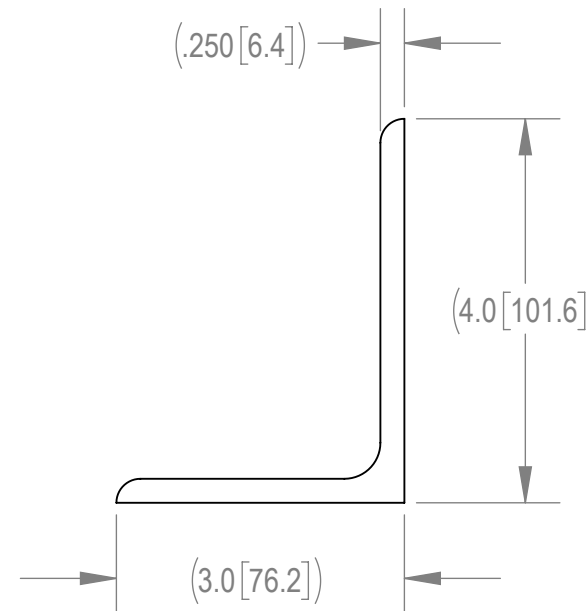
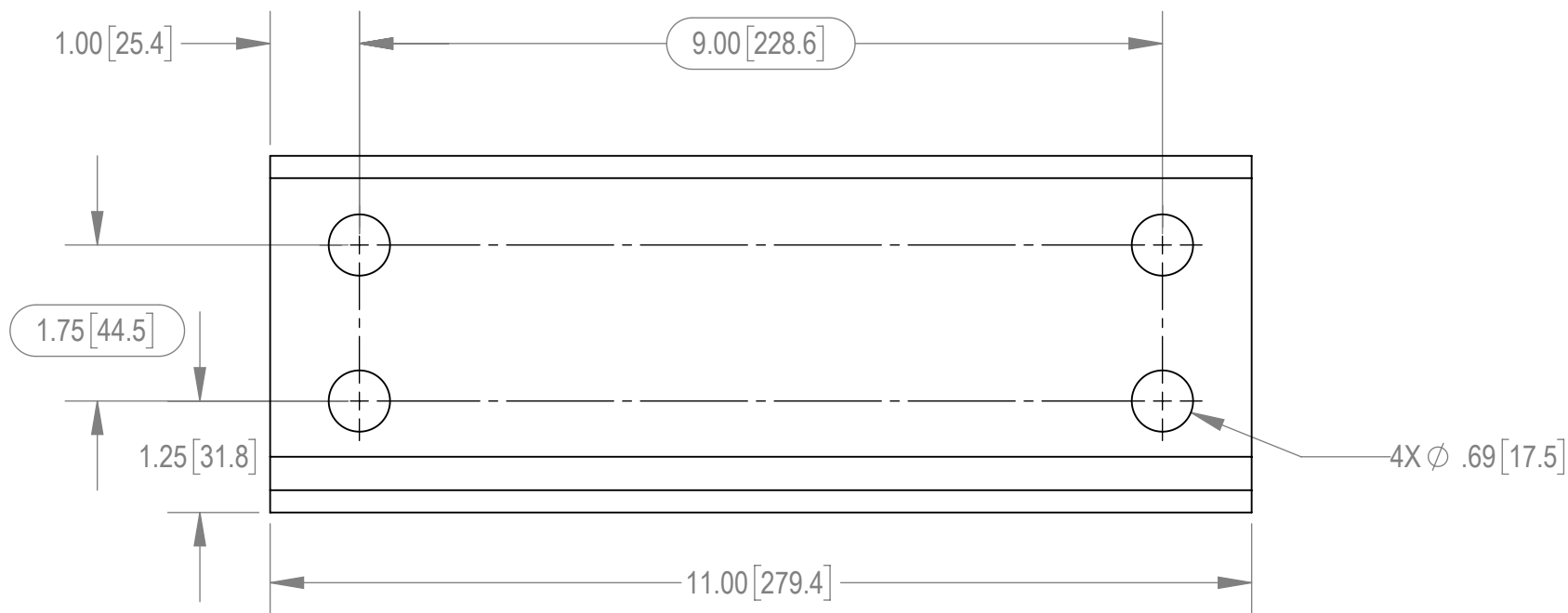
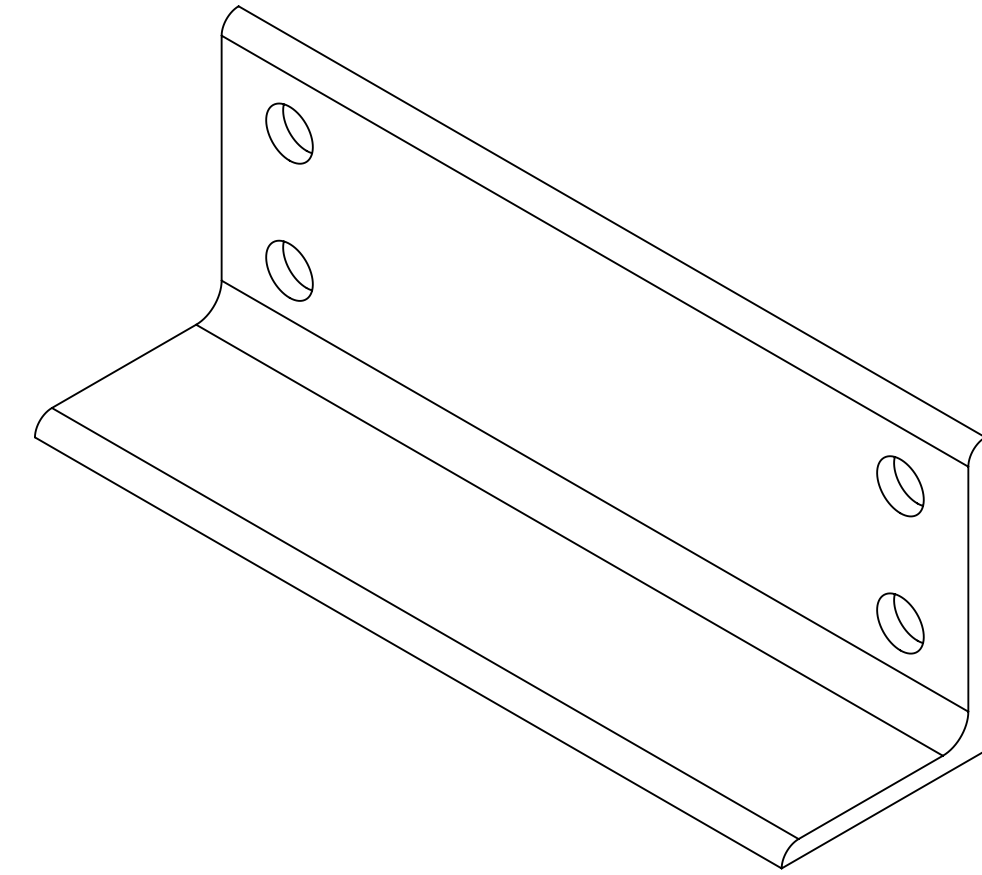
2


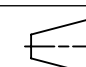
1

NOTES:

- 1.0 GENERAL
 - 1.1 ALL METRIC DIMENSIONS ARE IN BRACKETS
- 2.0 DESIGN NOTES
 - 2.1 DESIGNER PER CUSTOMER REQUIREMENTS
- 3.0 MANUFACTURING/SPECIAL REQUIREMENTS
- 4.0 TEST
- 5.0 PACKAGING

REVISIONS				
REV.	ECN	DESCRIPTION	BY	DATE
A	8000040261	INITIAL RELEASE	MRC	05/28/20



COMMSCOPE, INC. OF NORTH CAROLINA										
TOLERANCES					SAP MATERIAL MASTER					
1 PLACE .X ± .25			3 PLACE .XXX ± 0.06		MTC4104-0024					
2 PLACE .XX ± 0.12			ANGLES ± 2°		MATERIAL					
FINISH NONE					ANGLE .25 X 4 X 3 STEEL A529					
UNLESS OTHERWISE SPECIFIED DIMENSIONS ARE IN INCHES INTERPRET PER ANSI Y 14.5M-1994	CE	MRC	05/28/20	ANGLE, 4 X 3 X .25						
	RW	MC1107	05/28/2020							
	RV									
	AD	BCAMPBELLCON	07/29/2020							
	RE	BCROSS	07/30/2020							
ECN 008000040261			SCALE	DOCUMENT NO.						
			1:2	MTC4104-0024						
SIZE		WORK AREA	24	MODEL			DRAWING			SHEET 1 OF 1
C	 	VERSION	STATUS	REVISION	VERSION	STATUS	REVISION			
		00	RE		00	RE				

DENSITY	0.28	lbs/in ³
MASS	5.14	lbs
VOLUME	18.23	in ³
SURFACE AREA	152.44	in ²
HEIGHT	4.0	
LENGTH	11.0	
WIDTH	3.0	

4

3

2

1

4

3

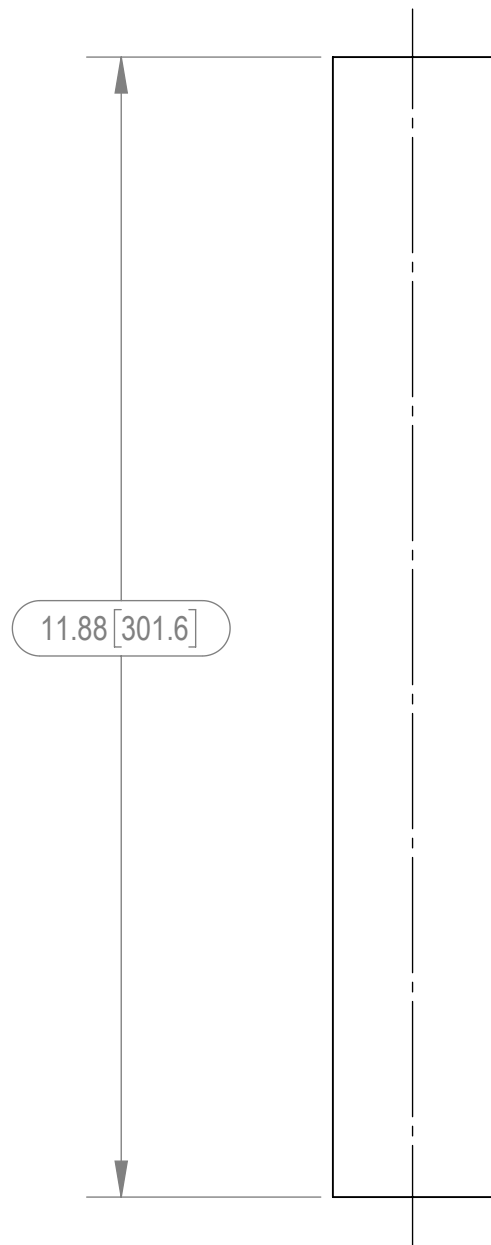
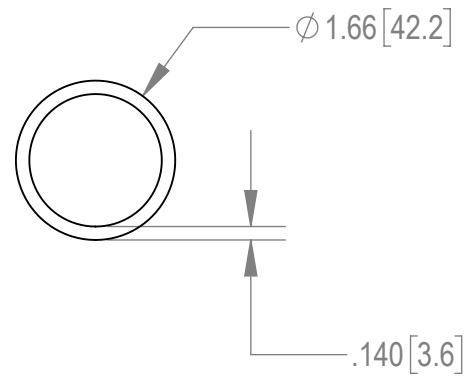
2

1

NOTES:

- 1.0 GENERAL
 - 1.1 ALL METRIC DIMENSIONS ARE IN BRACKETS
- 2.0 DESIGN NOTES
 - 2.1 DESIGNED PER CUSTOMER REQUIREMENTS
- 3.0 MANUFACTURING/SPECIAL REQUIREMENTS
- 4.0 TEST
- 5.0 PACKAGING

REVISIONS				
REV.	ECN	DESCRIPTION	BY	DATE
A	8000040261	INITIAL RELEASE	MRC	05/28/20



COMMSCOPE, INC. OF NORTH CAROLINA										
TOLERANCES					SAP MATERIAL MASTER					
1 PLACE .X ± .25			3 PLACE .XXX ± 0.06		MTC4104-0025					
2 PLACE .XX ± 0.12			ANGLES ± 2°							
FINISH NONE					MATERIAL 1.66 O.D. PIPE STEEL A500 GR B					
UNLESS OTHERWISE SPECIFIED DIMENSIONS ARE IN INCHES INTERPRET PER ANSI Y 14.3M-1994	CE	MRC	DATE	TITLE						
	RW	MC1107	05/28/2020	PIPE 1.66 O.D SCHD 40						
	RV									
	AD	BCAMPBELLCON	07/29/2020							
	RE	BCROSS	07/30/2020							
ECN 008000040261				SCALE	DOCUMENT NO.					
				1:2	MTC4104-0025					
SIZE		WORK AREA 24		MODEL			DRAWING			SHEET 1 OF 1
C			VERSION	STATUS	REVISION	VERSION	STATUS	REVISION		
			00	RE		00	RE			

DENSITY	0.28	lbs/in ³
MASS	2.24	lbs
VOLUME	7.94	in ³
SURFACE AREA	114.75	in ²
HEIGHT	1.66	
LENGTH	11.88	
WIDTH	1.66	

4

3

2

1