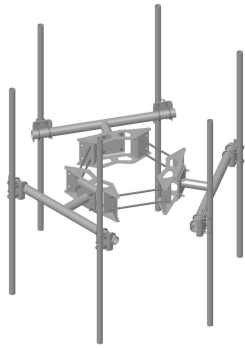


MC-DPM2M-6-96



Monopole Co-location Dual Pipe Mount Kit, 12 in to 50 in OD, 4 ft 9 in face, includes pipes

Product Classification

Product Type Co-location dual pipe mount kit

General Specifications

Mounting Monopole, 304.8–1270 mm (12–50 in) OD

Pipe, quantity 6

Sectors, quantity 3

Dimensions

Height 2,438.4 mm | 96 in

Face Width 1.463 m | 4.8 ft

Width 1,447.8 mm | 57 in

Length 355.6 mm | 14 in

Pipe Length 2,438.4 mm | 96 in

Mounting Diameter, maximum 1270 mm | 50 in

Mounting Diameter, minimum 304.8 mm | 12 in

Pipe Outer Diameter 60.96 mm | 2.4 in

Stand-off Distance 355.6 mm | 14 in

Mounting Circumference, maximum 3,990.34 mm | 157.1 in

Mounting Circumference, minimum 1,196.34 mm | 47.1 in

Material Specifications

Material Type Hot dip galvanized steel

Mechanical Specifications

Wind Rating 120 mph (BWS) at 150 ft AGL | 140 mph (3-second gust) at 150 ft AGL using Exposure D per FBC

MC-DPM2M-6-96

Wind Rating Criteria	Two 72 in x 8 in panel antennas per sector
Wind Rating Test Method	TIA/EIA-222-G

Environmental Specifications

Man Rating	250 lb vertical man load at 15 mph (BWS)
-------------------	------------------------------------------

Packaging and Weights

Included	Dual pipe frames Pipe mounts Ring mount
Packaging quantity	1
Weight, net	326.587 kg 720 lb

Regulatory Compliance/Certifications

Agency	Classification
ISO 9001:2015	Designed, manufactured and/or distributed under this quality management system



* Footnotes

Man Rating	BWS—w Base Wind Speed
Wind Rating	BWS—w Base Wind Speed; FBC—Florida Building Code