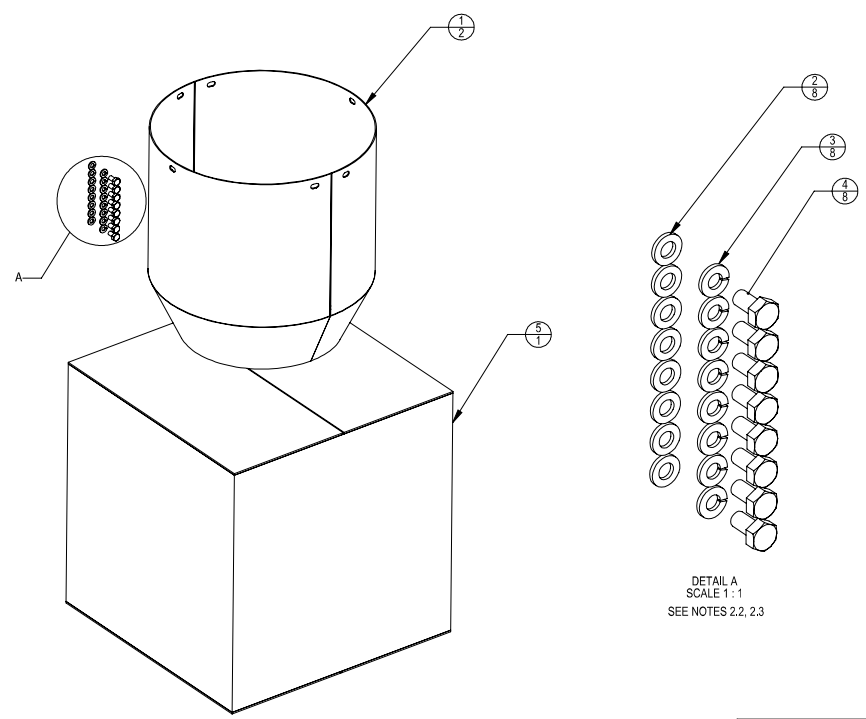


1. GENERAL NOTES
 - 1 ALL METRIC DIMENSIONS ARE IN BRACKETS
 - 2 FEATURES CRITICAL TO QUALITY ARE INDICATED IN
 - 3 MARK PART WITH IDENTIFICATION NUMBER
2. DESIGN NOTES
 - 1 THE FINISHED ITEM IS A SERIES ASSEMBLY. A -XX FINISH SUFFIX DESIGNATES A PRODUCT PART NUMBER THAT REPRESENTS SPECIFIC COLOR AND/OR FINISH. REFER TO METROCELL DOCUMENT MTM1004 FOR SPECIFIC REQUIREMENTS
 - 2 LOOSE HARDWARE TO BE PACKAGED IN PLASTIC BAG
 - 3 BOM INCLUDES 2 SETS OF SPARE HARDWARE
3. MANUFACTURING/SPECIAL REQUIREMENTS
4. TEST
5. PACKAGING

REV. / TCN		REVISIONS		
REV.	TCN	DESCRIPTION	BY	DATE
A	8000031422	INITIAL RELEASE	JP1130	9/4/2018



DETAIL A
SCALE 1:1
SEE NOTES 2.2, 2.3

BILL OF MATERIALS						
ITEM NO.	PART NUMBER	DESCRIPTION	WEIGHT	QTY.	NOTE	
1	MTM1032-500-XX	POLETOP TRANSITION WELDMENT 8IN POLE	1.46 LBS	2	2.1	
2	100521-25	WSHR,FLAT,M6,6.4X12X1.6,SST,PASS		8	2.2, 2.3	
3	100522-25	WSHR,LK,SPLT, M6,SST, PASS		8	2.2, 2.3	
4	100534-223	SCR,HCS,HEX,M6X12,SST,PASS		8	2.2, 2.3	
5	BX141414	14"X14"X14" KRAFT BOX	1.649	1		

© 2018 CommScope, Inc. Confidential

DENSITY	4.70	lbs/m ³																		
MASS	194.81	lbs																		
VOLUME	3703.32	in ³																		
SURFACE AREA		in ²																		
HEIGHT	14 in.																			
LENGTH	14 in.																			
WIDTH	14 in.																			

COMMSCOPE, INC. OF NORTH CAROLINA										
TOLERANCES					SAP MATERIAL MASTER					
1 PLACE .X ± 0.25			3 PLACE .XXX ± 0.06		860641110-PTX					
2 PLACE .XX ± 0.12			ANGLES ± 0.5°							
FINISH SEE NOTE 2.1					MATERIAL SEE BOM					
POLETOP TRANSITION KIT 8IN POLE										
SCALE 1:4 DOCUMENT NO. 860641110-PT SERIES										
UNLESS OTHERWISE SPECIFIED, DIMENSIONS ARE IN INCHES AND DECIMALS THEREOF.		NAME		DATE		TITLE				
CE		JP1130		08/31/18						
RW		JP1130		09/06/2018						
RV		FA1024		09/06/2018						
AD		FA1024		09/06/2018						
RE		JP1130		09/06/2018						
ECN		008000031422								
SIZE		WORK AREA 24		MODEL		DRAWING				
VERSION		STATUS		REVISION		VERSION		STATUS		REVISION
00		RE		A		01		RE		A

SHEET 1 OF 1