

SD212-SF2P2(ZZZ)(DXX-YYY) 2 dipole, 5/4.5 dBd, bi-directional pattern, 138-174 MHz

- 2-bay dipole antenna that covers the 138-174 MHz band
- 5 or 4.5 dBd gain with bi-directional pattern
- PIM and PIP rated (optional) for modern LMR/PMR systems
- Available with a range of options to suit different applications

The SD212 series is an extremely rugged 2-bay exposed dipole antenna designed for applications where moderate gain is required and Passive Intermodulation (PIM) interference is a consideration. These premium-quality antennas are well suited for public safety applications. Industry-leading -150 dBc PIM rating makes it the ideal candidate for modern LMR/PMR systems.

Ordering information:

Model number	Connector	DT*	PIM (dBc)	Mount	CTM	Gain (dBd)
SD212-SF2P2LDF(D00)	7/16 DIN(F)	0°	<-150	Top/side**	5849	4.5
SD212-SF2P2L4F(D00)	4.3-10(F)	0°	<-150	Top/side**	6898	5
SD212-SF2P2LNM(D00)	N(M)	0°	<-139	Top/side**	6898	5
SD212-SF2P2SNM(D00)	N(M)	0°	N/A	Top/side**	5130^	5
SD212-SF2P2SNM(D02)	N(M)	2°	N/A	Top/side**	5130^	5
SD212-SF2P2SNM(D04)	N(M)	4°	N/A	Top/side**	5130^	5
SD212-SF2P2SNM(D06)	N(M)	6°	N/A	Top/side**	5130^	5
SD212-SF2P2SNF(D00)	N(F)	0°	N/A	Top/side**	5130^	5

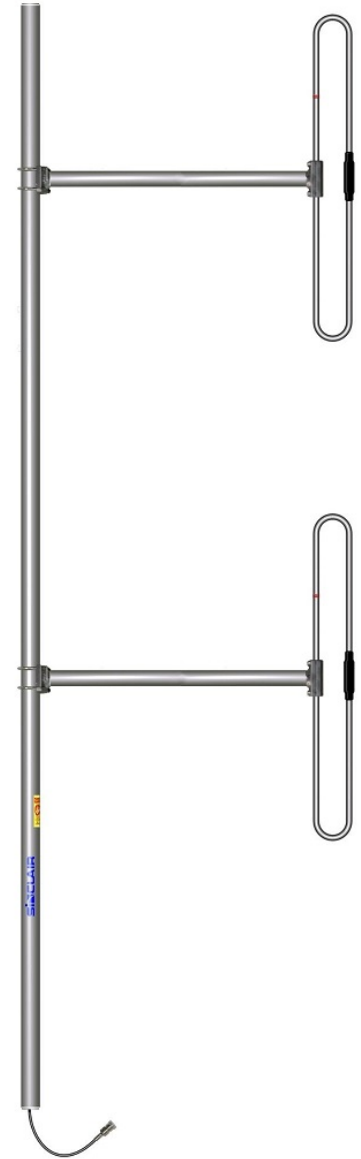
Note:

* DT: downtilt

** Top/side: can be either top mounted or side mounted

^ CTM# 6898 for SD212E-SF2P2SNM

Additional customizations are available upon request, such as integrated PIP rated, lightning spike, ice guard, less-mast, or a combination. Please contact your Sinclair Sales Representative or Customer Service Representative for more information.



Regular (non-ABK) version shown.

Region	United States	Europe, Middle East, and Africa	Canada, Caribbean, and Latin America	Asia-Pacific
Telephone	1 800 263 3275	+1 905 727 0165 ext 232	Canada: 1 905 726 7676 International: +1 905 726 7676	+1 905 727 0165 ext 287
E-mail	salesusa@sinctech.com	salesemea@sinctech.com	salescan@sinctech.com	salesasia@sinctech.com
Product Specification Sheet		SD212-SF2P2(ZZZ)(DXX-YYY)	Issue: 1	Dated: 01-08-24

Electrical Specifications

Frequency Range	MHz	138 to 174	
Bandwidth	MHz	36	
Input VSWR (max)		1.5:1	
Polarization		vertical	
Impedance	Ω	50	
Pattern		Bi-directional	
Vertical beamwidth (typ)	degrees	34	*1
Average Input Power (max)	W	300	
Grounding		All metal parts DC-grounded	

Notes

- *1 : $\pm 10\%$
- *2 : Qty: 2
- *3 : Optional, not included
- *4 : Top mount. Side mount 200 mph.
- *5 : Top mount. Side mount 130 mph.
- *6 : Top mount. Side mount 93 ft-lbs.
- *7 : Top mount. Not applicable to side mount.

Mechanical Specifications

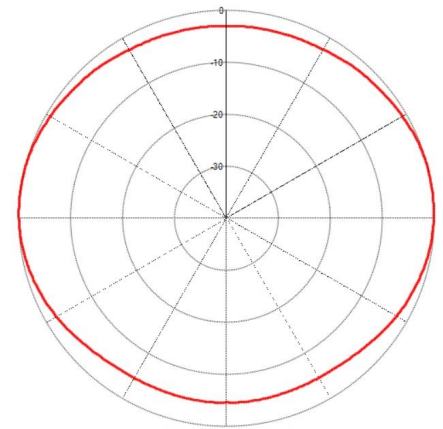
Width	in (mm)	40.4 (1026)	
Depth	in (mm)	3 (76)	
Length/ Height	in (mm)	120 (3048)	
Base pipe diameter	in (mm)	1.9 (48)	
Radiating element material		aluminum	
Base pipe material		aluminum	
Weight	lbs (kg)	23 (10.44)	
Weight iced (1/2" ice)	lbs (kg)	55 (24.97)	
Mounting Hardware (Optional)		Clamp005, clamp005X, clamp015, or clamp130	*2
Kit for Offset Side Mount (straight tower leg)		SMK-125-A3 or SMK-125-A7	*3
Actual shipping weight	lbs (kg)	45 (20.43)	
Shipping dimensions	in (mm)	124x43x4 (3150x1092x102)	

Ordering Information

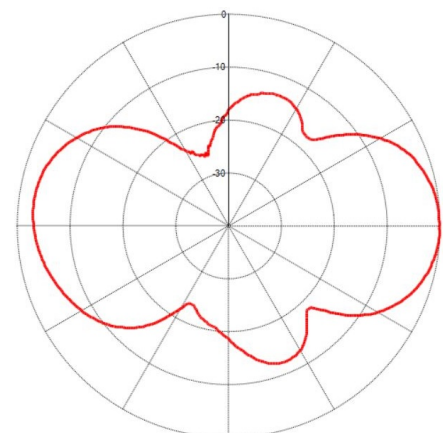
Clamps to be ordered separately.

Environmental Specifications

Temperature range	$^{\circ}\text{F}$ ($^{\circ}\text{C}$)	-40 to +140 (-40 to +60)	
Wind Loading Area (Flat Plate Equivalent)	ft^2 (m^2)	2.1 (0.2)	
Wind Loading Area (1/2" ice)	ft^2 (m^2)	3.6 (0.33)	
Rated wind velocity (no ice)	mph (km/h)	150 (242)	*4
Rated wind velocity (1/2" radial ice)	mph (km/h)	105 (169)	*5
Lateral Thrust (100 mph No Ice)	lbs (N)	75 (333.6)	
Torsional moment (100 mph No Ice)	ft-lbs (Nm)	79 (106.7)	
Bending moment (100 mph No Ice)	ft-lbs (Nm)	202 (272.7)	*6
Tip deflection (100 mph No Ice)	degrees	1.1	*7



Horizontal



Vertical, 0° downtilt

Region	United States	Europe, Middle East, and Africa	Canada, Caribbean, and Latin America	Asia-Pacific
Telephone	1 800 263 3275	+1 905 727 0165 ext 232	Canada: 1 905 726 7676 International: +1 905 726 7676	+1 905 727 0165 ext 287
E-mail	salesusa@sinctech.com	salesemea@sinctech.com	salescan@sinctech.com	salesasia@sinctech.com
Product Specification Sheet		SD212-SF2P2(ZZZ)(DXX-YYY)	Issue: 1	Dated: 01-08-24

www.sinctech.com