
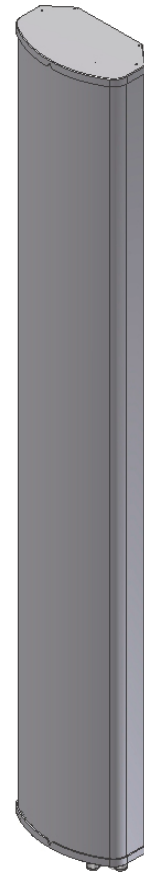


CWX063X19x00

XX-Pol | Dual Band VET Panel | 65° | 15.2 / 17.3 dBi

Ordering Options	Model Number				
Manual Electrical Tilt	CWX063X19M00				
Remote Electrical Tilt AISG v1.1	CWX063X19R00				
Remote Electrical Tilt AISG v2.0 / 3GPP	CWX063X19G00				
Electrical Characteristics	696-960 MHz		1710-2170 MHz		
Frequency bands (MHz)	696-806	806-960	1710-1880	1850-1990	1900-2170
Polarization	±45°		±45°		
Horizontal beamwidth	70°	65°	70°	67°	66°
Vertical beamwidth	11°	9.5°	7°	6.5°	6°
Gain	14.3 dBi	15.2 dBi	16.4 dBi	17.0 dBi	17.3 dBi
Electrical downtilt	0-12°		0-10°		
Impedance	50Ω		50Ω		
VSWR	< 1.5:1		<1.5:1		
Upper sidelobe suppression	< -17 dB typical		< -17 dB typical		
Front-to-back ratio	> 30 dB		> 27 dB		
In-band isolation	> 25 dB		> 30 dB		
Isolation between ports	> 30 dB		> 30 dB		
Input power	2 x 500 W		2 x 250 W		
IM3 (2x20W carriers)	< -153 dBc		< -153 dBc		
Lightning protection	Direct Ground				
Operating temperature	-40° to +60° C (-40° to +140° F)				
Connector(s)	4 Ports / 7/16 DIN / Female / Bottom				
Mechanical Characteristics					
Dimensions Length x Width x Depth	1906 x 307.3 x 177.2 mm		75.0 x 12.1 x 7.0 in		
Weight without mounting brackets: MET	15.0 kg		33.0 lbs		
Weight without mounting brackets: RET	15.3 kg		33.7 lbs		
Survival wind speed	241 km/hr		150 mph		
Wind loads (160 km/hr or 100 mph)	Front: 707 N; Side: 419 N		Front: 159 lbf; Side: 94 lbf		
Remote Electrical Downtilt Control					
Remote Electrical Tilt (RET) Control	The remote control of the electrical tilt is managed by a module (MDCU) totally inserted at the bottom of the antenna. One single module controls individually the tilt of each band (no need of daisy chain cables between the bands). This module does not add any additional length at the bottom of the antenna. For RET control, the transparent caps must be in place and locked. The tilt angle indicators always remains visible and the antenna still has manual tilt control (manual override).				
RET Module Part Number (one per antenna)	MDCU-A0000 for AISG v1.1 protocol (one unit included in CWX063X19R00)				
	MDCU-G0000 for 3GPPP/AISG v2.0 protocol (one unit included in CWX063X19G00)				
Important Installation Instructions	 In order to operate RET control, the transparent caps covering the tilt adjustment indicators must be engaged and locked. Do not cut them from the antenna.				
Mounting Options	Part Number	Fits Pipe Diameter		Weight	
3-Point Mounting Bracket Kit	MKS09P02	50-115 mm	2.0-4.5 in	4.1 kg	9 lbs
3-Point Mounting & Downtilt Bracket Kit	MKS09T02	50-115 mm	2.0-4.5 in	6.4 kg	14 lbs
Tri-Sector UNICELL Options					
For use inside UNICELL modules	UNX-20-xx				

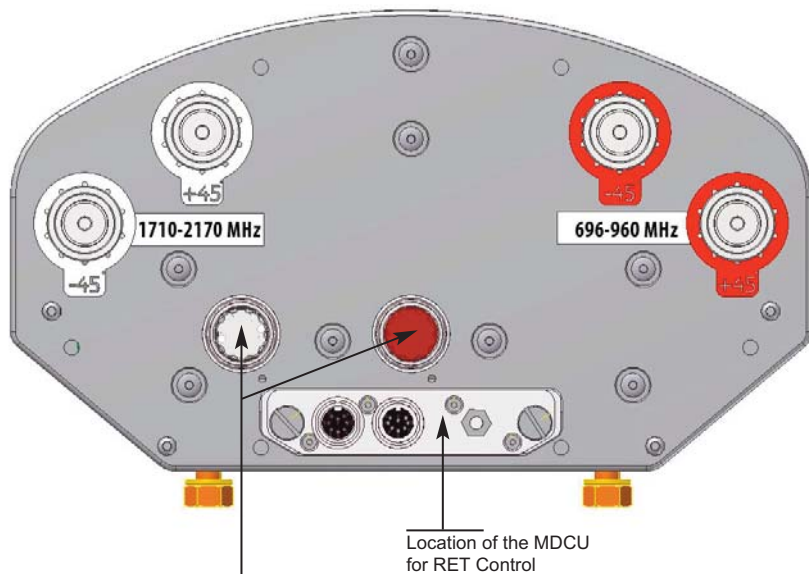


Quoted performance parameters are provided to offer typical or range values only and may vary as a result of normal manufacturing and operational conditions. Extreme operational conditions and/or stress on structural supports is beyond our control. Such conditions may result in damage to this product. Improvements to product may be made without notice.

CWX063X19x00

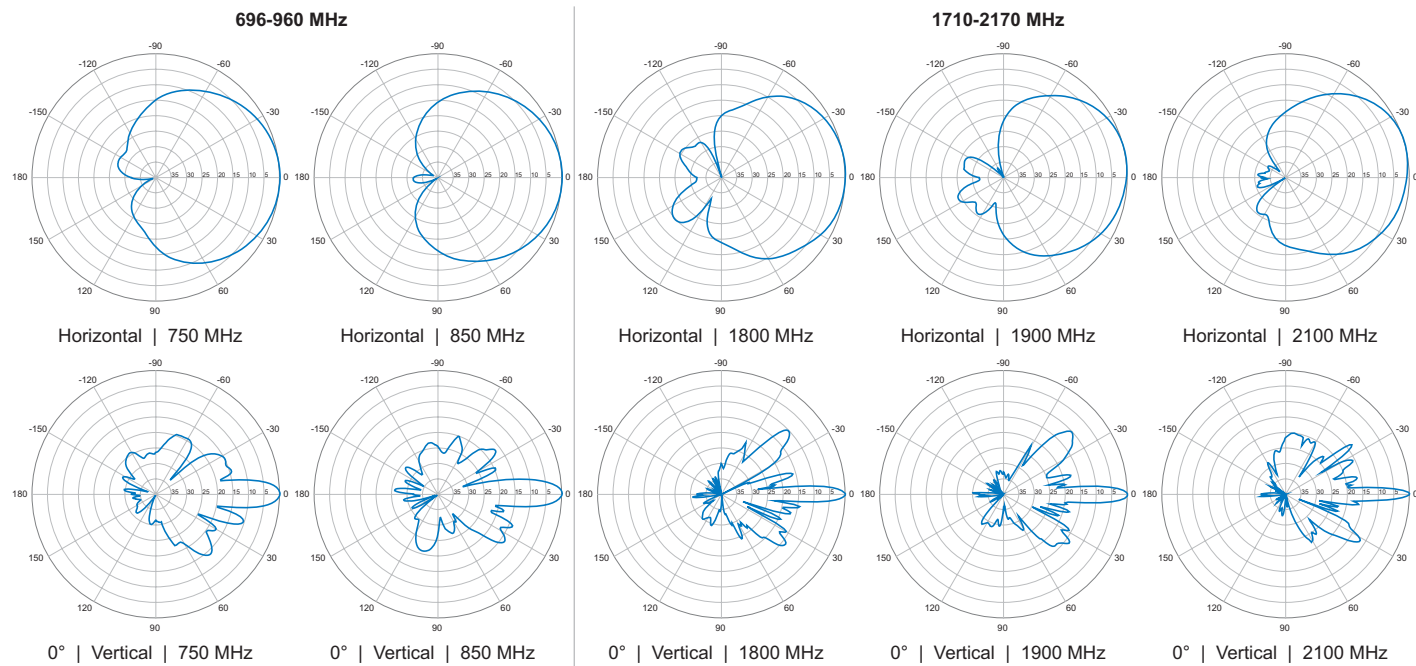
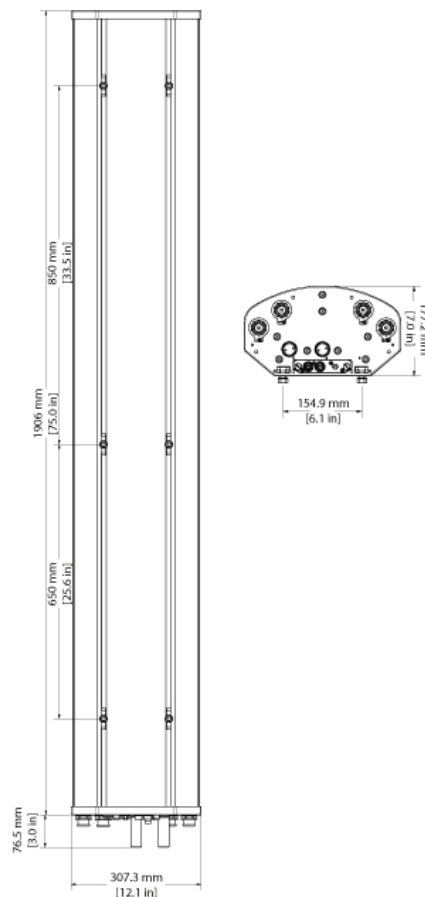
XX-Pol | Dual Band VET Panel | 65° | 15.2 / 17.3 dBi

Bottom View



Tilt indicators covered by transparent caps. Manual adjustment is accessed by removing the caps. Knob colors are the same as the connectors.

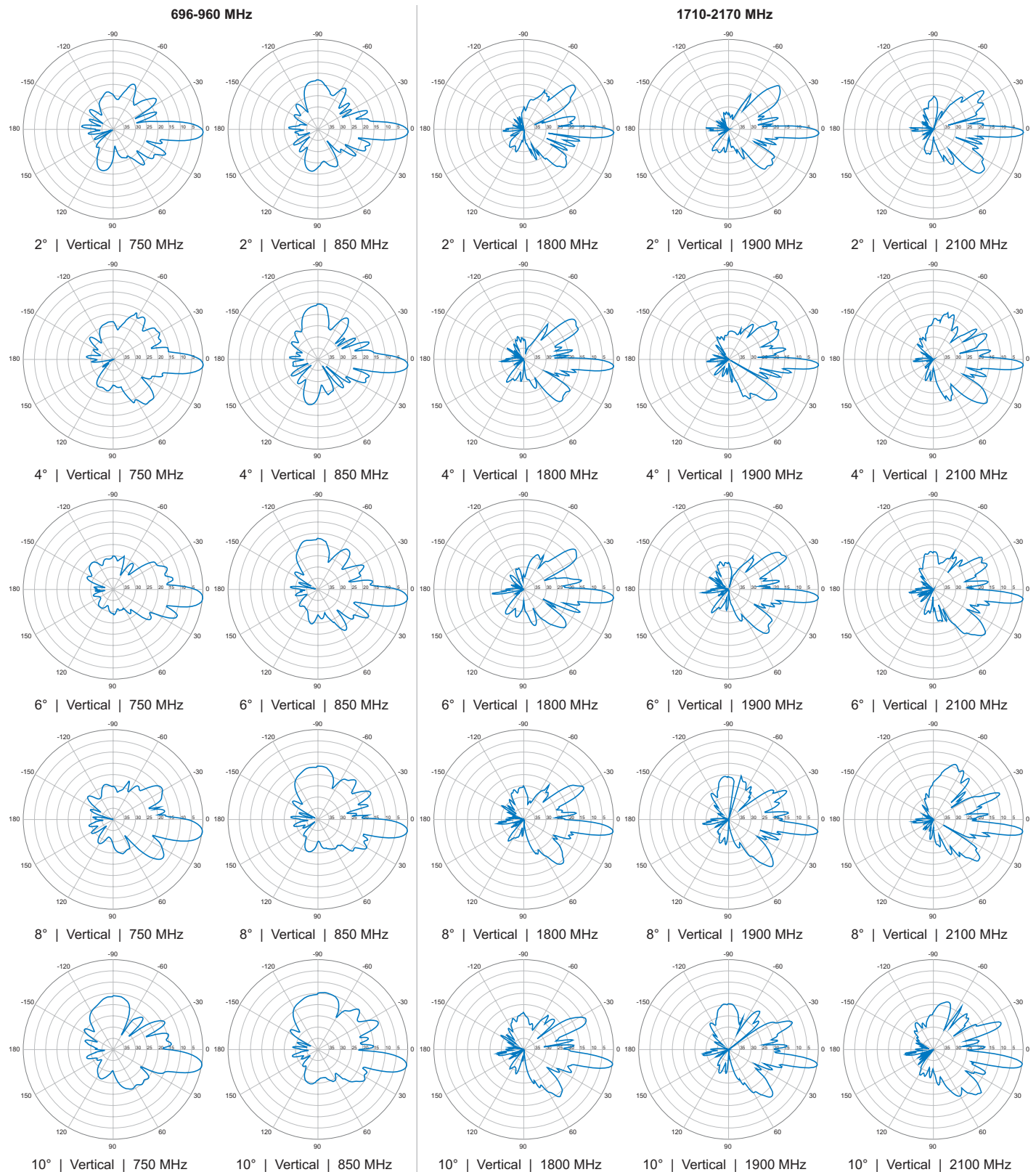
! In order to operate RET control, the transparent caps covering the tilt adjustment indicators must be engaged and locked. Do not cut them from the antenna.



Quoted performance parameters are provided to offer typical or range values only and may vary as a result of normal manufacturing and operational conditions. Extreme operational conditions and/or stress on structural supports is beyond our control. Such conditions may result in damage to this product. Improvements to product may be made without notice.

CWX063X19x00

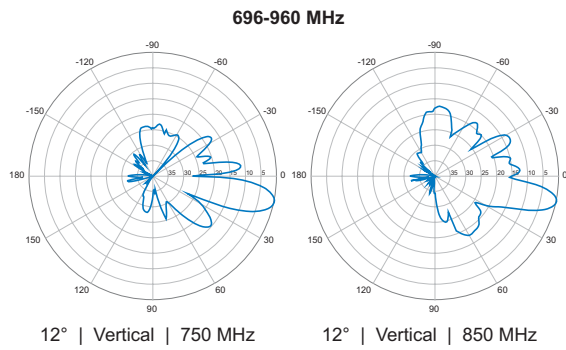
XX-Pol | Dual Band VET Panel | 65° | 15.2 / 17.3 dBi



Quoted performance parameters are provided to offer typical or range values only and may vary as a result of normal manufacturing and operational conditions. Extreme operational conditions and/or stress on structural supports is beyond our control. Such conditions may result in damage to this product. Improvements to product may be made without notice.

CWX063X19x00

XX-Pol | Dual Band VET Panel | 65° | 15.2 / 17.3 dBi



Quoted performance parameters are provided to offer typical or range values only and may vary as a result of normal manufacturing and operational conditions. Extreme operational conditions and/or stress on structural supports is beyond our control. Such conditions may result in damage to this product. Improvements to product may be made without notice.